

Some non-Io-A.

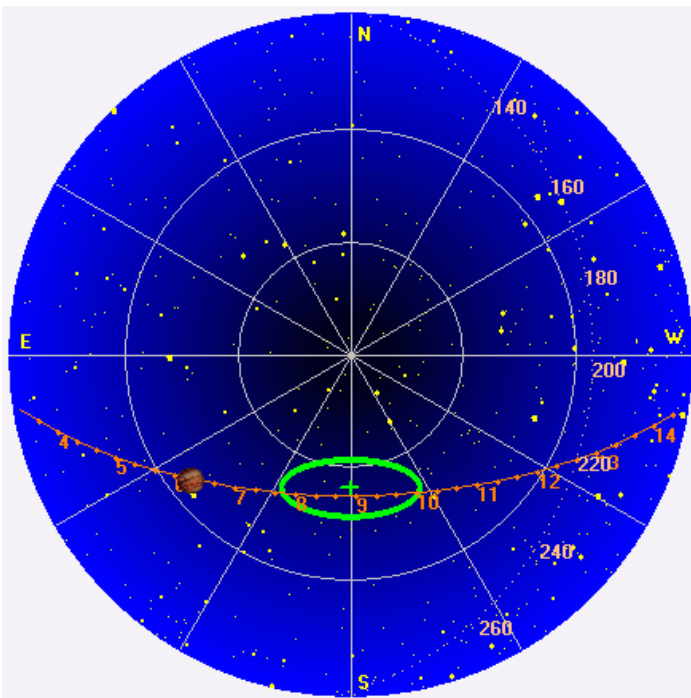
RCP dominant L bursts 0453–746 UTC from 16 to 27 MHz, negative frequency drift emission envelopes.

Note higher freq polarization flip, an instrumental effect due to the very large hour angle.

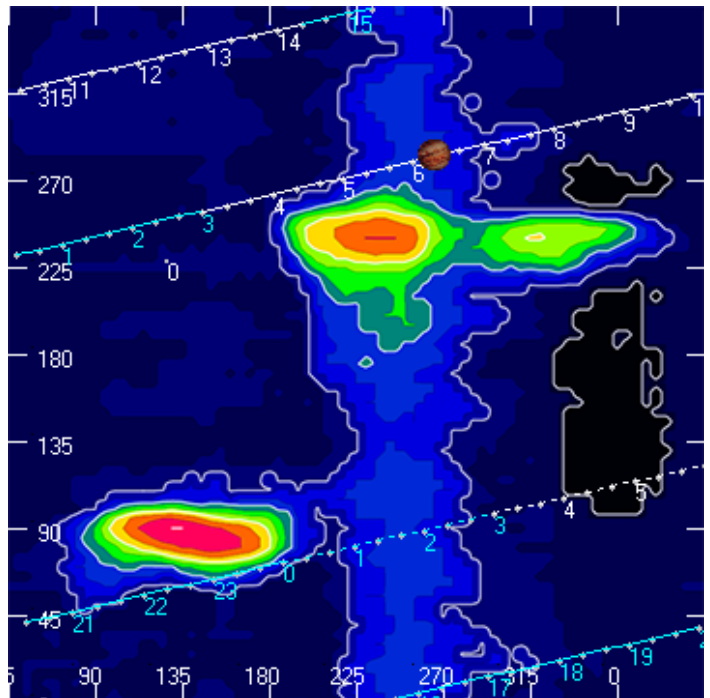
Jupiter was -60° to -17° off axis.

Jupiter was leading the Sun by 129° .

Jupiter's location at midpoint of observed emission (0619 UTC)

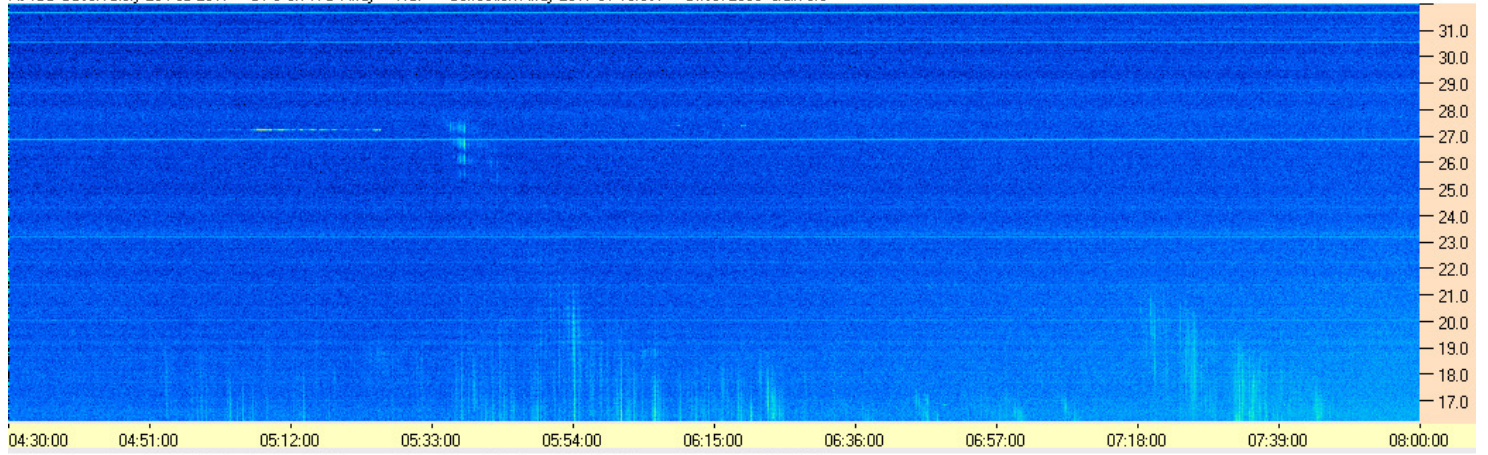


Sky map with array HPBW in green.

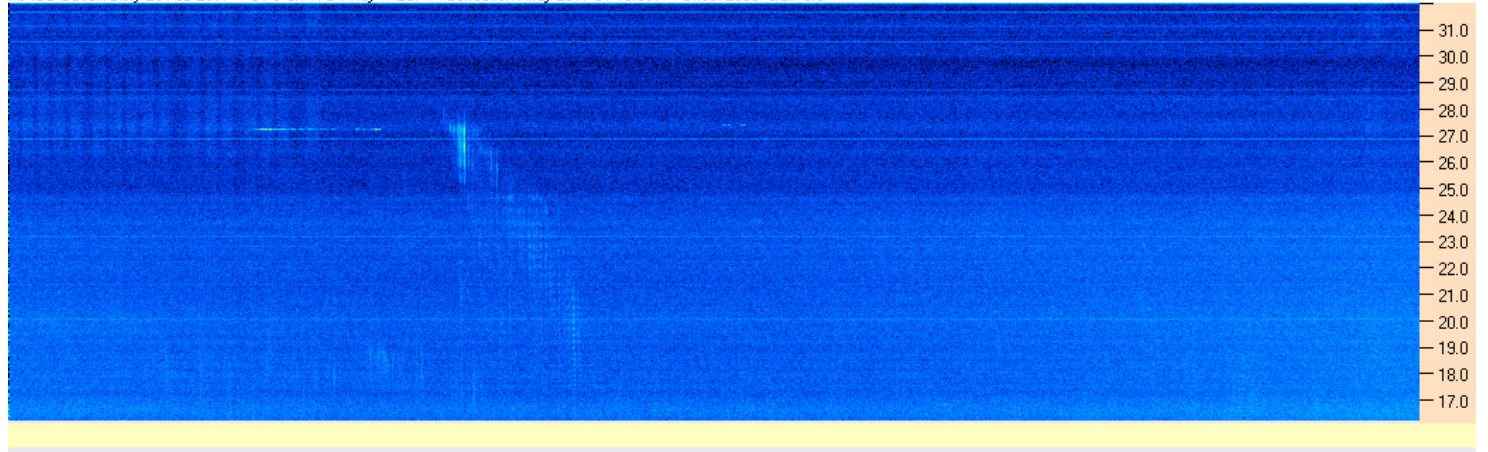


CML-Io phase plane.

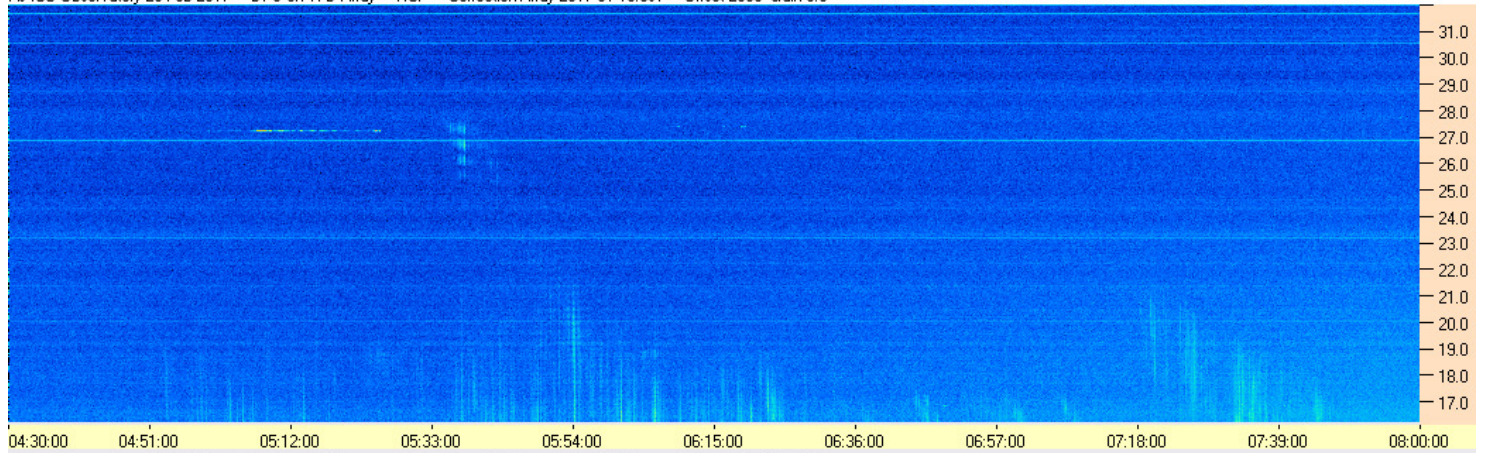
AJ4CO Observatory 20 Feb 2017 - DPS on TFD Array - RCP - Correction Array 2017 01 10.csv - Offset 2050 Gain 5.0



AJ4CO Observatory 20 Feb 2017 - DPS on TFD Array - LCP - Correction Array 2017 01 10.csv - Offset 2050 Gain 5.0



AJ4CO Observatory 20 Feb 2017 - DPS on TFD Array - RCP - Correction Array 2017 01 10.csv - Offset 2050 Gain 5.0



AJ4CO Observatory 20 Feb 2017 - DPS on TFD Array - LCP - Correction Array 2017 01 10.csv - Offset 2050 Gain 5.0

