

Subject: [radiojove-data] 19 May 2016 non-Io-A

From: Dave Typinski <davetyp@typnet.net>

Date: 05/30/2016 07:13

To: RadioJove-Data <radiojove-data@lists.nasa.gov>

Playing catch-up from a trip to Europe...

Adding to Tom's nice report, here's some non-Io-A from 5/19.

RCP dominant L bursting 0330-0344 UTC from 16 to 21 MHz, negative drift emission envelopes.

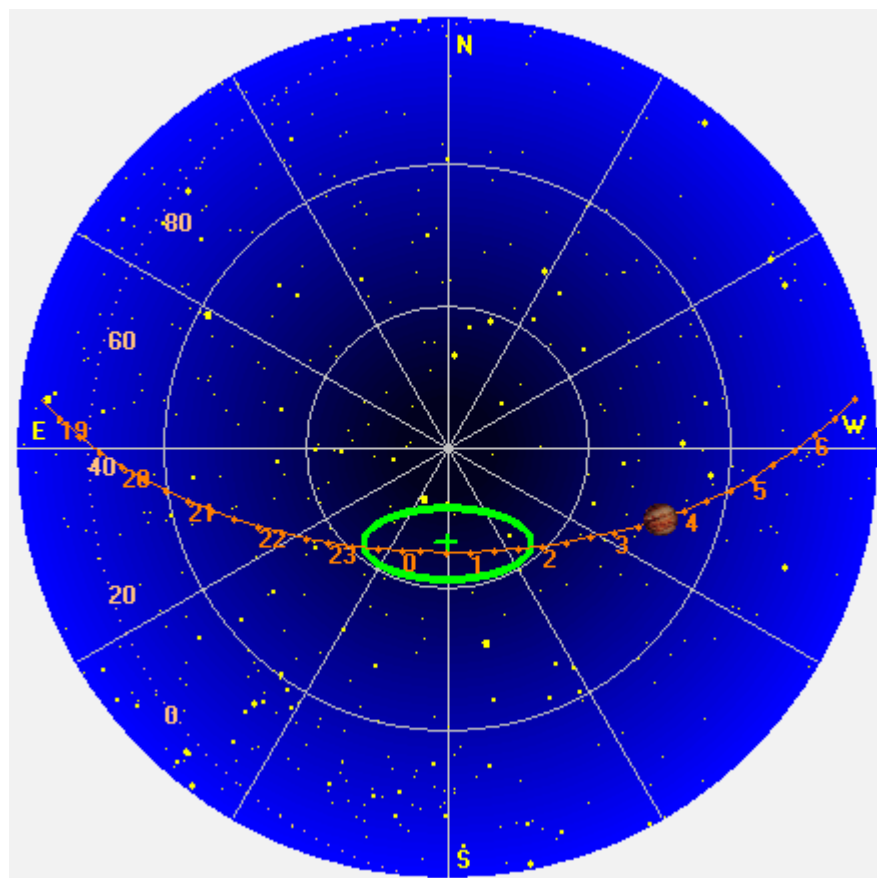
Jupiter was +41° to +45° off axis.

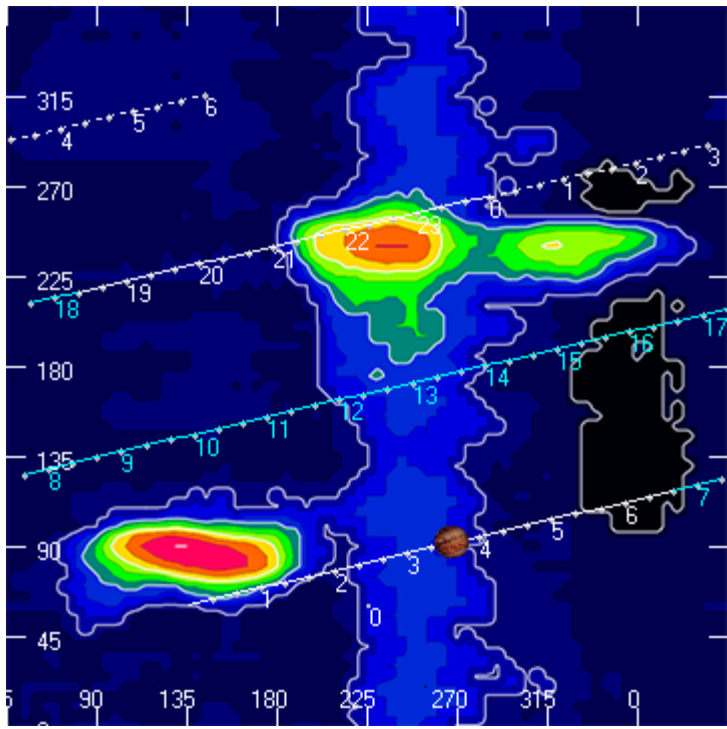
Jupiter was trailing the Sun by 105°.

--

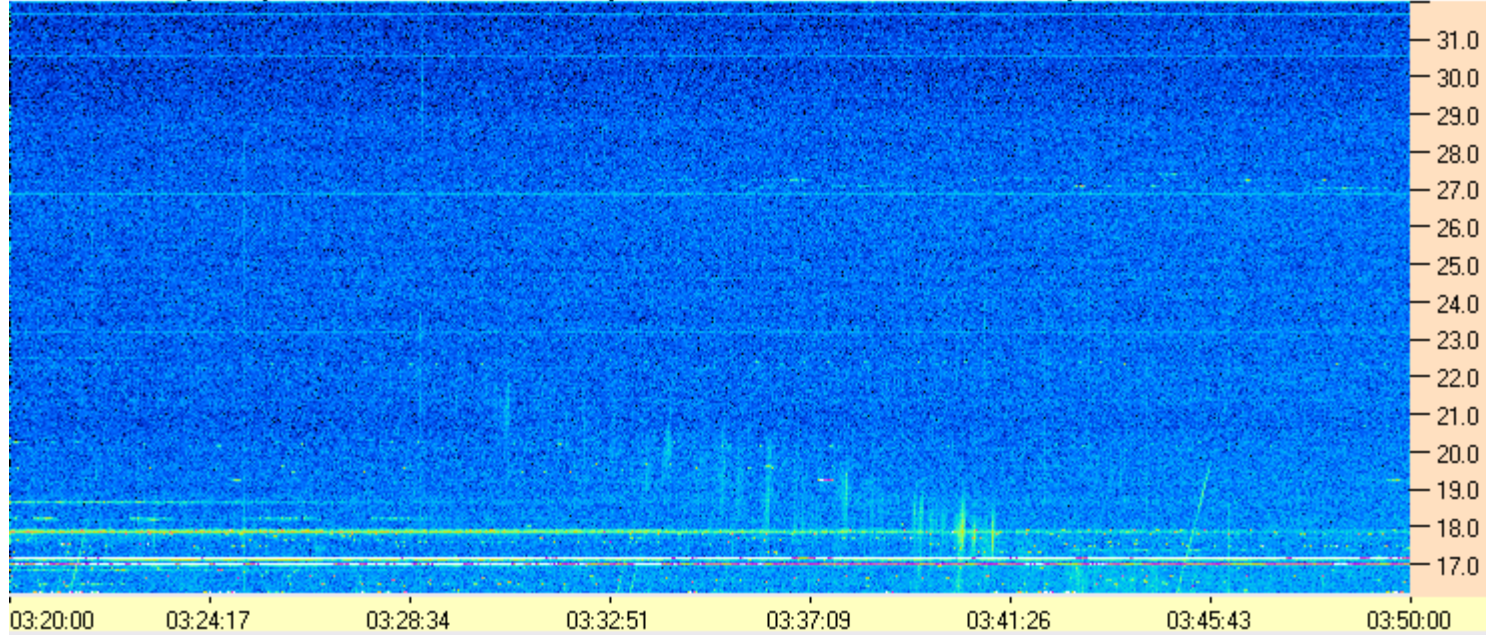
Dave

AJ4CO Observatory 19 May 2016, log entry 716





AJ4CO Observatory 19 May 2016 - DPS 30 kHz IF on TFD Array in CP Mode - RCP MC +13 dB Correction Array 2014 12 18 B.csv Offset 2075 Gain 5.0



AJ4CO Observatory 19 May 2016 - DPS 30 kHz IF on TFD Array in CP Mode - LCP MC +13 dB Correction Array 2014 12 18 B.csv Offset 2075 Gain 5.0

