

Subject: [radiojove-data] 10 May 2016 non-Io-A

From: Dave Typinski <davetyp@typnet.net>

Date: 05/11/2016 21:04

To: RadioJove-Data <radiojove-data@lists.nasa.gov>

Adding to Tom & Wes & Jim & Nathan & Dave's nice reports, here's some non-Io-A from Tuesday morning.

RCP dominant L bursting 0000-0109 UTC from 16 to 28 MHz, negative drift emission envelope.

Storm may have started a few minutes prior to 0000 UTC, but no DPS data is available. Either the computer's new motherboard or an update to RSS conspired to not record anything during that time period.

Easy to see the MUF descending below 16 MHz at 0115 UTC.

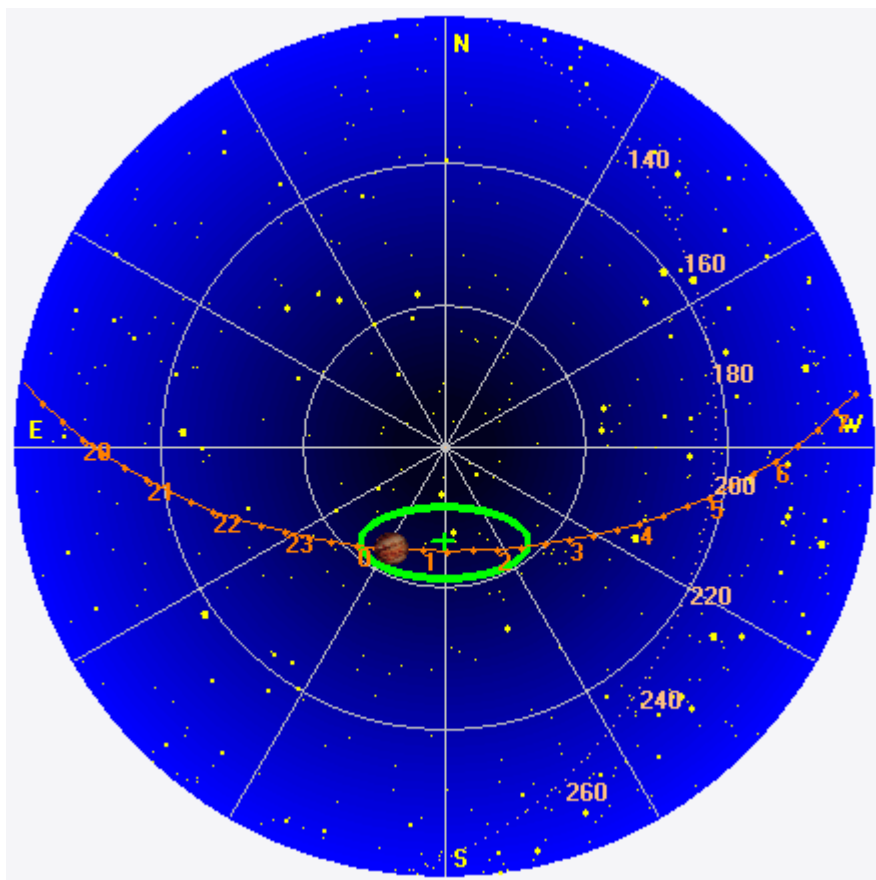
Jupiter was -20° to -3° off axis.

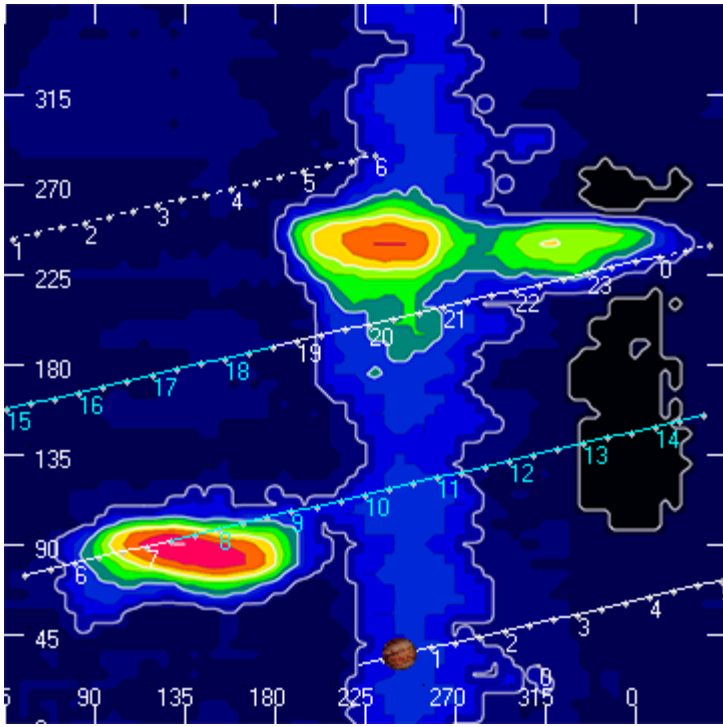
Jupiter was trailing the Sun by 114° .

--

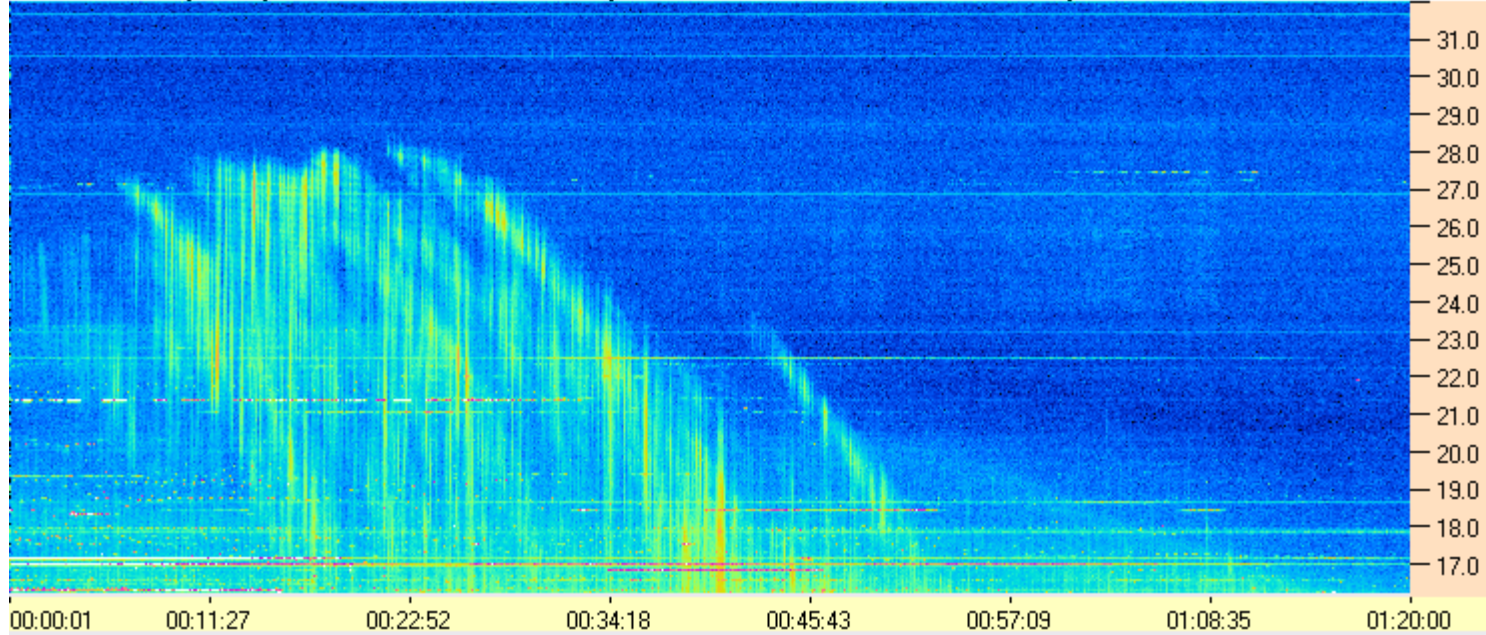
Dave

AJ4CO Observatory 10 May 2016, log entry 710





AJ4CO Observatory 10 May 2016 - DPS 30 kHz IF on TFD Array in CP Mode - RCP MC +13 dB Correction Array 2014 12 18 B.csv Offset 2050 Gain 5.0



AJ4CO Observatory 10 May 2016 - DPS 30 kHz IF on TFD Array in CP Mode - LCP MC +13 dB Correction Array 2014 12 18 B.csv Offset 2050 Gain 5.0

