

**Subject:** [radiojove-data] 07 May 2016 non-lo-A

**From:** Dave Typinski <davetyp@typnet.net>

**Date:** 05/07/2016 22:02

**To:** RadioJove-Data <radiojove-data@lists.nasa.gov>

Adding to Tom's nice reports, here's some non-lo-A from Saturday morning.

RCP dominant L bursting 0251-0449 UTC from 16 to 26 MHz, negative drift emission envelopes.

No strip chart -- that computer's motherboard unceremoniously died shortly before this storm.

Jupiter was  $+20^\circ$  to  $+49^\circ$  off axis.

Jupiter was trailing the Sun by  $116^\circ$ .

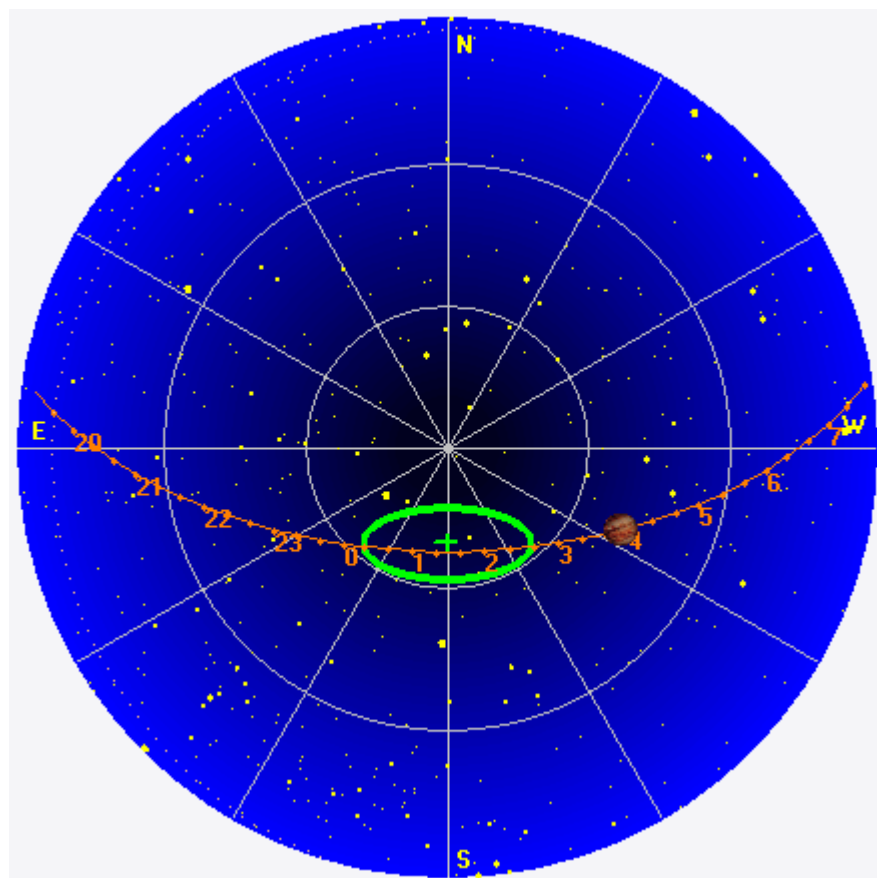
--

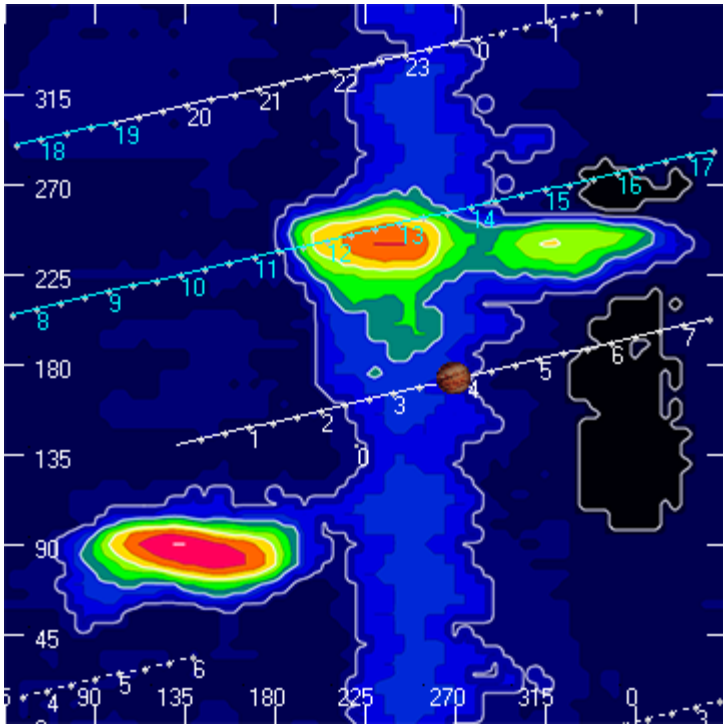
Dave

---

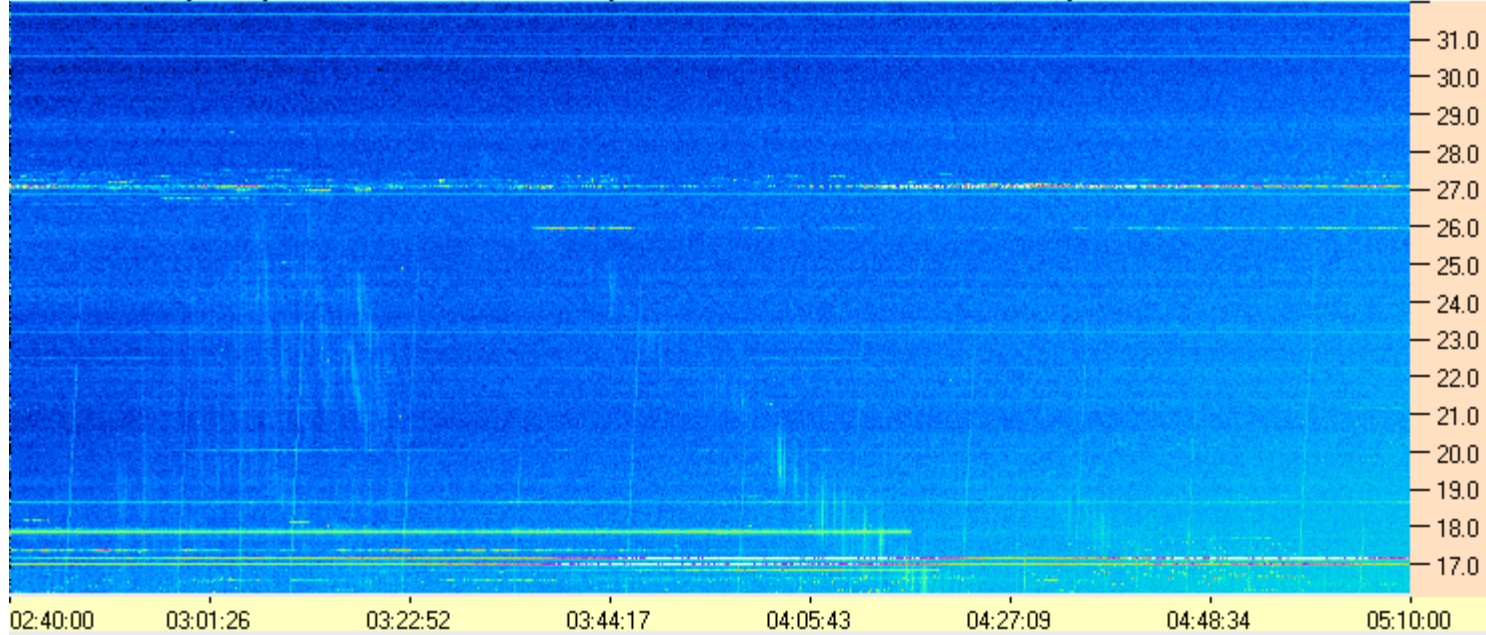
**AJ4CO Observatory 07 May 2016, log entry 709**

---





AJ4CO Observatory 07 May 2016 - DPS 30 kHz IF on TFD Array in CP Mode - RCP MC +13 dB Correction Array 2014 12 18 B.csv Offset 2075 Gain 5.0



AJ4CO Observatory 07 May 2016 - DPS 30 kHz IF on TFD Array in CP Mode - LCP MC +13 dB Correction Array 2014 12 18 B.csv Offset 2075 Gain 5.0

