

Subject: [radiojove-data] 30 Apr 2016 non-Io-A

From: Dave Typinski <davetyp@typnet.net>

Date: 04/30/2016 23:37

To: RadioJove-Data <radiojove-data@lists.nasa.gov>

Here's some brief, weak non-Io-A from Saturday morning.

RCP dominant L bursting 0348-0421 UTC from 16 to 20 MHz, negative drift emission envelopes.

Too low in freq for the Jove receivers strip chart.

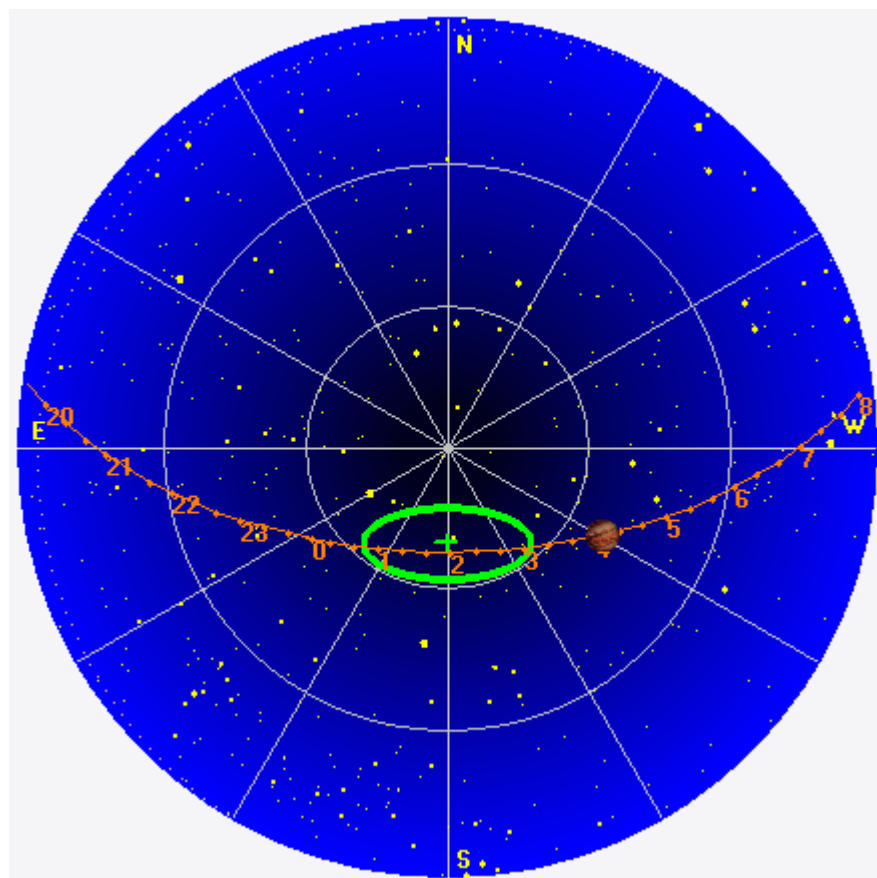
Jupiter was $+27^\circ$ to $+35^\circ$ off axis.

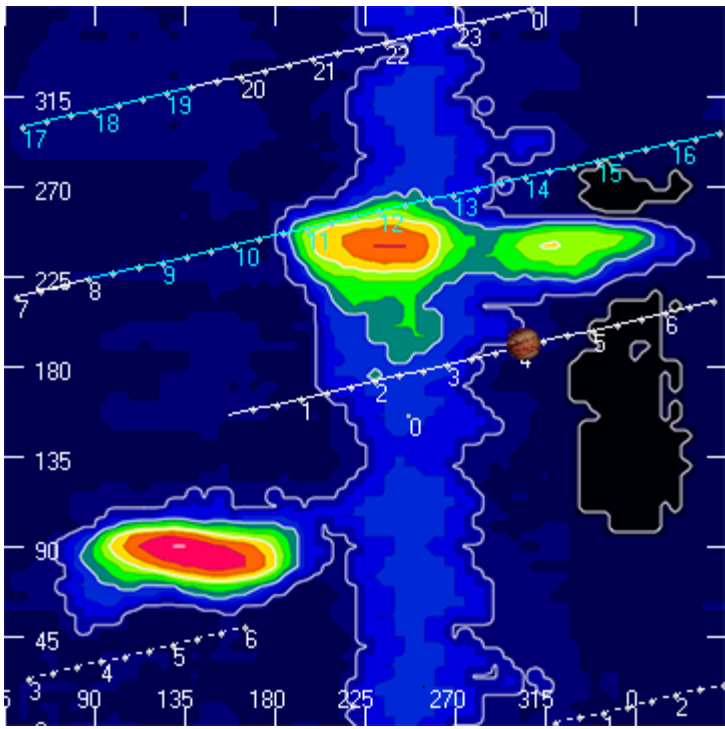
Jupiter was trailing the Sun by 123° .

--

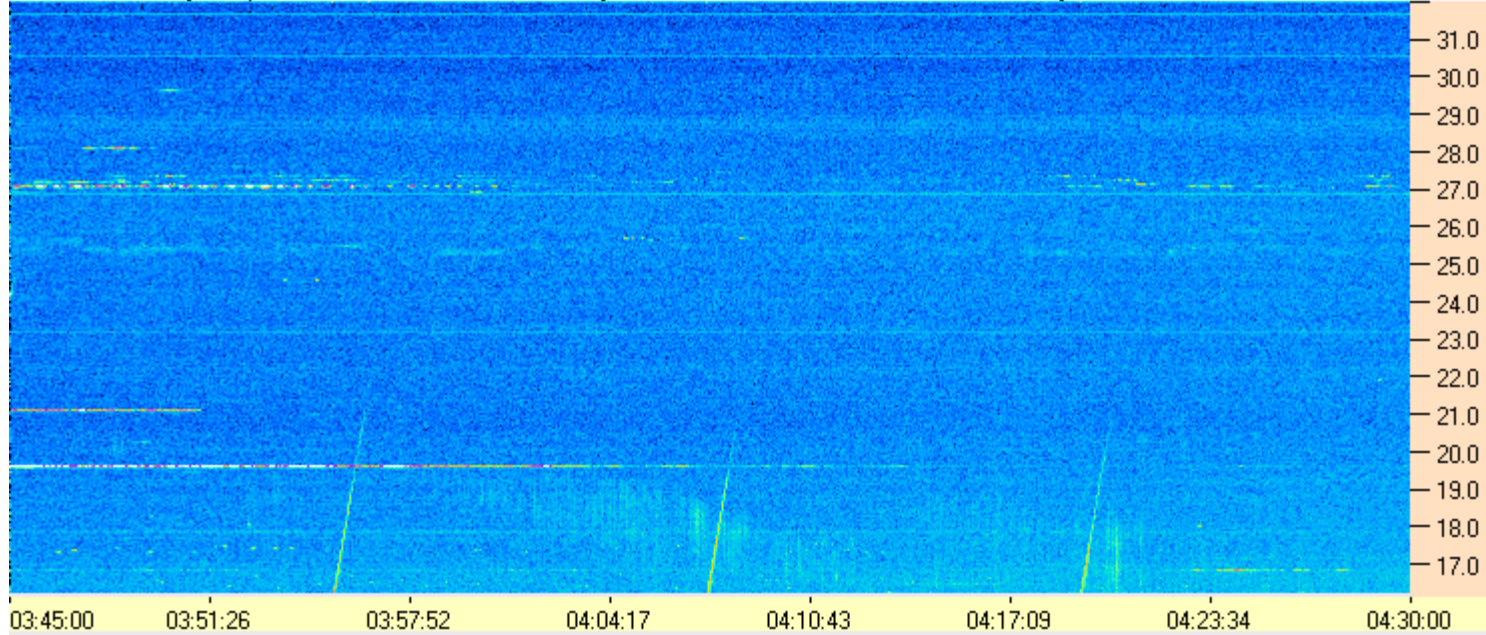
Dave

AJ4CO Observatory 30 Apr 2016, log entry 703





AJ4CO Observatory 30 Apr 2016 - DPS 30 kHz IF on TFD Array in CP Mode - RCP MC +13 dB Correction Array 2014 12 18 B.csv Offset 2050 Gain 5.0



AJ4CO Observatory 30 Apr 2016 - DPS 30 kHz IF on TFD Array in CP Mode - LCP MC +13 dB Correction Array 2014 12 18 B.csv Offset 2050 Gain 5.0

