

Subject: [radiojove-data] 26 Apr 2016 Io-D

From: Dave Typinski <davetyp@typnet.net>

Date: 04/29/2016 23:15

To: RadioJove-Data <radiojove-data@lists.nasa.gov>

Adding to Tom's nice report, here's some Io-D from Tuesday morning.

LCP dominant L bursting 0415-0521 UTC from 16 to 19 MHz, positive drift emission envelope.

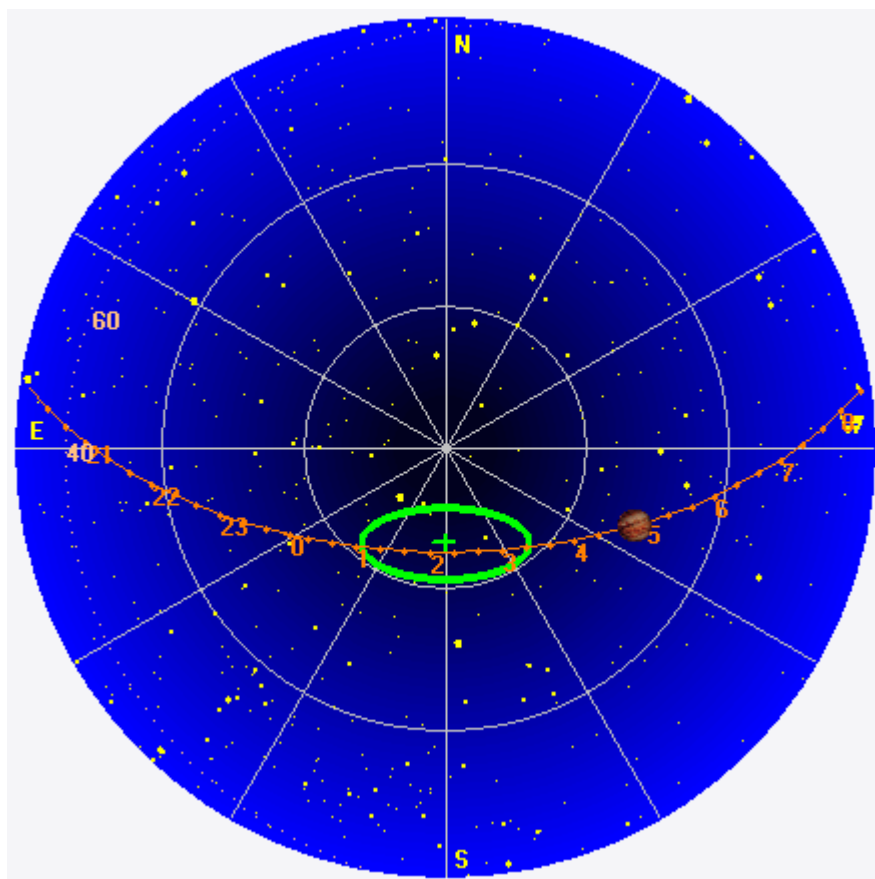
Jupiter was +30° to +46° off axis.

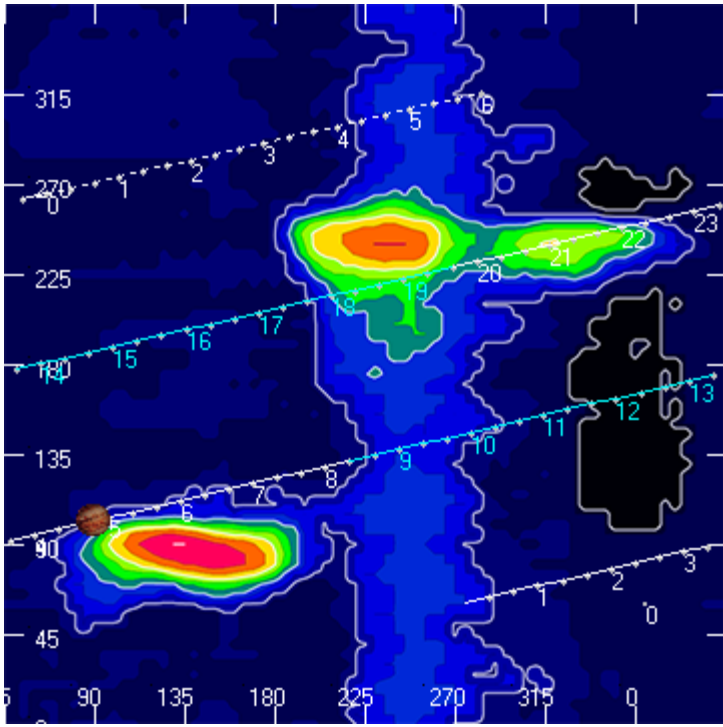
Jupiter was trailing the Sun by 127°.

--

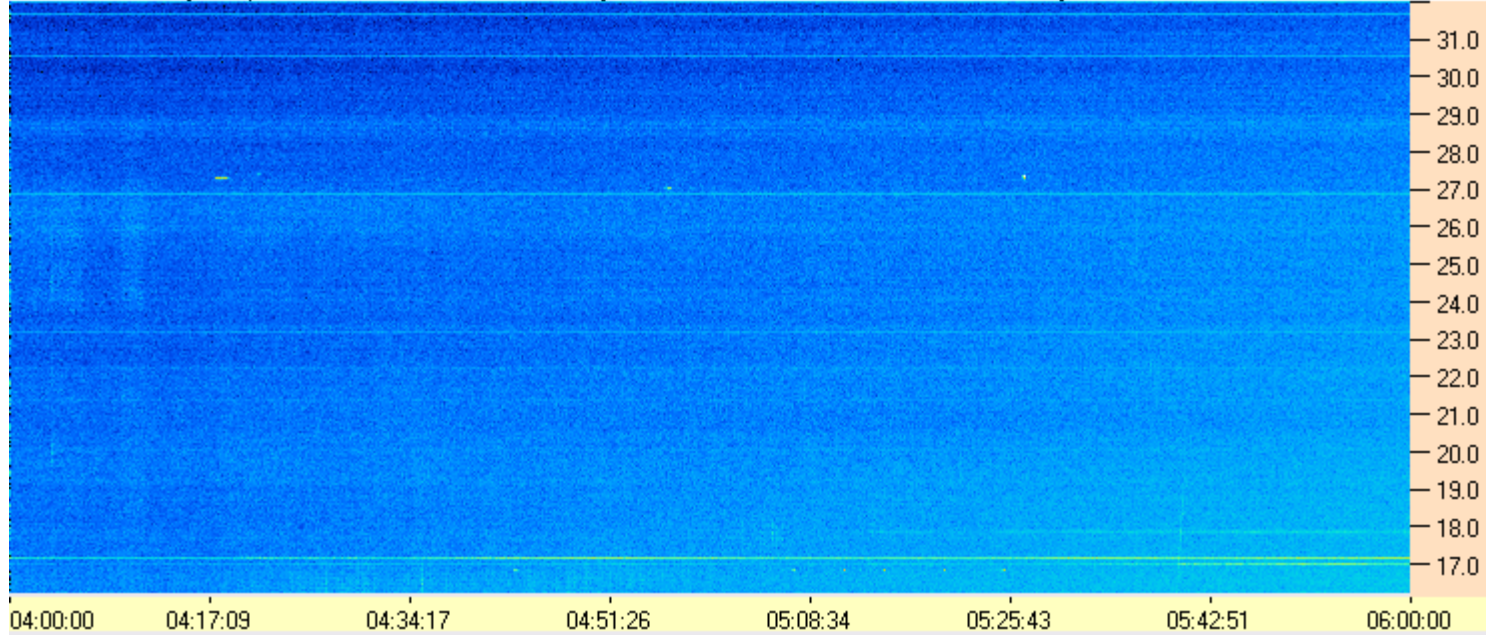
Dave

AJ4CO Observatory 26 Apr 2016, log entry 700





AJ4CO Observatory 26 Apr 2016 - DPS 30 kHz IF on TFD Array in CP Mode - RCP MC +13 dB Correction Array 2014 12 18 B.csv Offset 2075 Gain 5.0



AJ4CO Observatory 26 Apr 2016 - DPS 30 kHz IF on TFD Array in CP Mode - LCP MC +13 dB Correction Array 2014 12 18 B.csv Offset 2075 Gain 5.0

