

Subject: [radiojove-data] 19 Apr 2016 Io-D

From: Dave Typinski <davetyp@typnet.net>

Date: 04/23/2016 12:50

To: RadioJove-Data <radiojove-data@lists.nasa.gov>

Adding to Wes & Jim & Nathan's nice reports, here's some Io-D from Tuesday morning.

LCP dominant L bursting 0235-0452 UTC from 16 to 20 MHz, positive drift emission envelope.

Weak intermittent line noise present throughout.

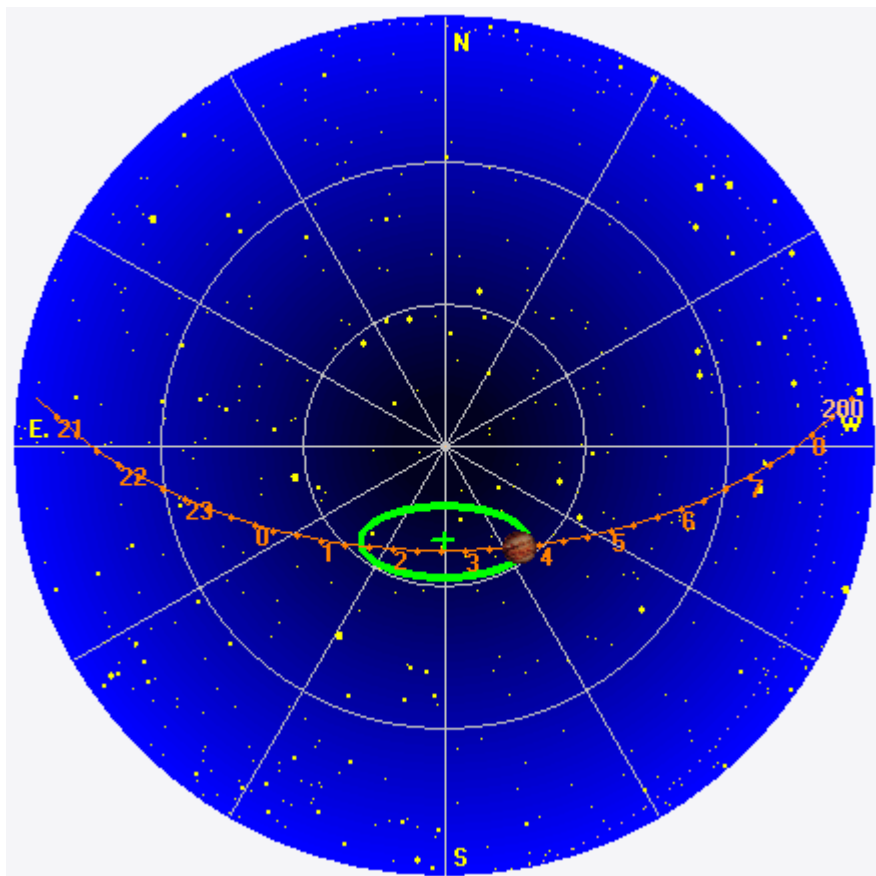
Jupiter was -3° to $+32^\circ$ off axis.

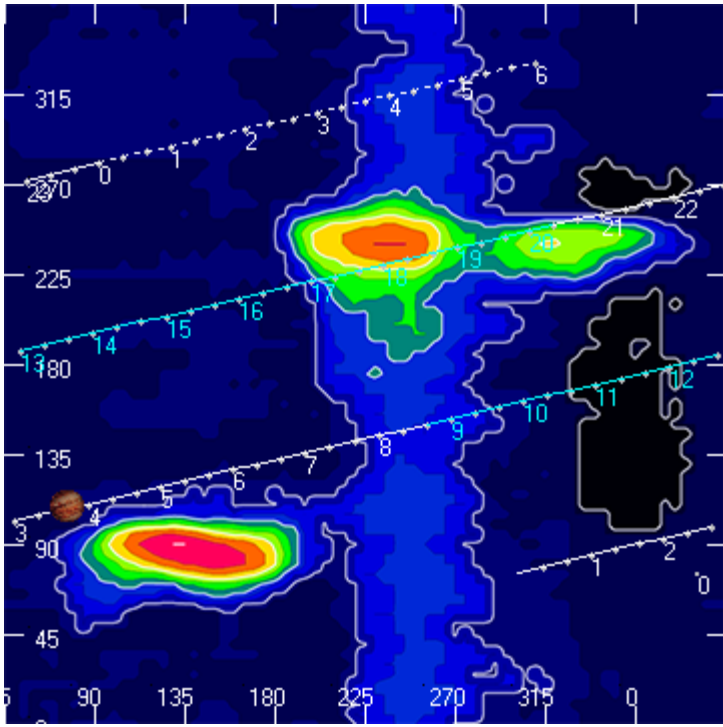
Jupiter was trailing the Sun by 134° .

--

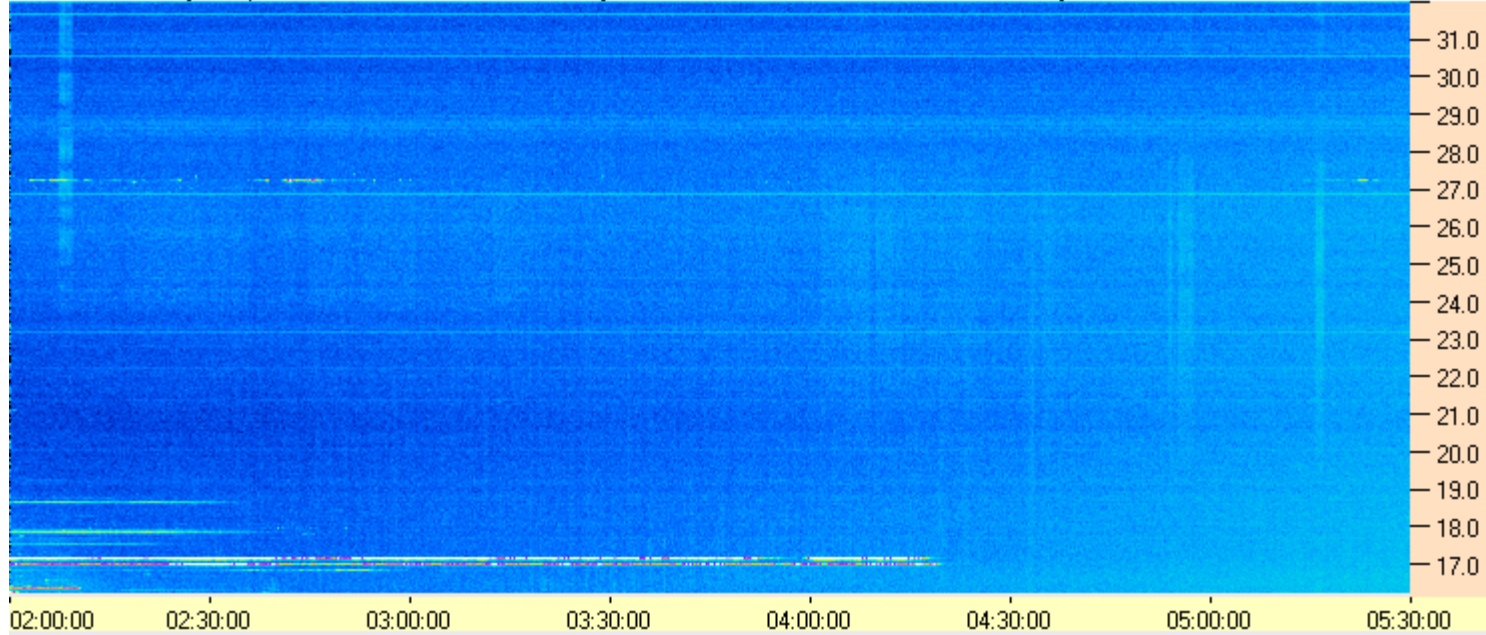
Dave

AJ4CO Observatory 19 Apr 2016, log entry 696





AJ4CO Observatory 19 Apr 2016 - DPS 30 kHz IF on TFD Array in CP Mode - RCP MC +13 dB Correction Array 2014 12 18 B.csv Offset 2050 Gain 5.0



AJ4CO Observatory 19 Apr 2016 - DPS 30 kHz IF on TFD Array in CP Mode - LCP MC +13 dB Correction Array 2014 12 18 B.csv Offset 2050 Gain 5.0

