

**Subject:** [radiojove-data] 15 Apr 2016 non-Io-B

**From:** Dave Typinski <davetyp@typnet.net>

**Date:** 04/17/2016 22:23

**To:** RadioJove-Data <radiojove-data@lists.nasa.gov>

Adding to Jim's nice report, here's some non-Io-B from Friday morning.

RCP dominant L bursting 0153-0214 UTC from 16 to 26 MHz, positive drift emission envelopes.

Jupiter was  $-17^\circ$  to  $-12^\circ$  off axis.

Jupiter was trailing the Sun by  $139^\circ$ .

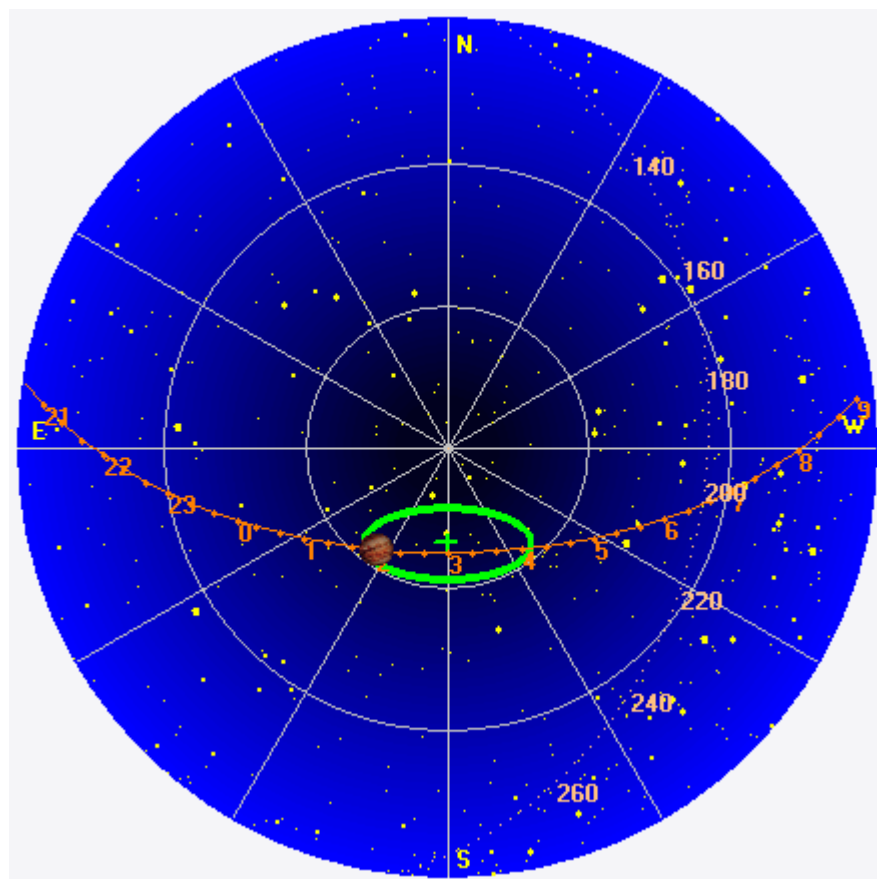
--

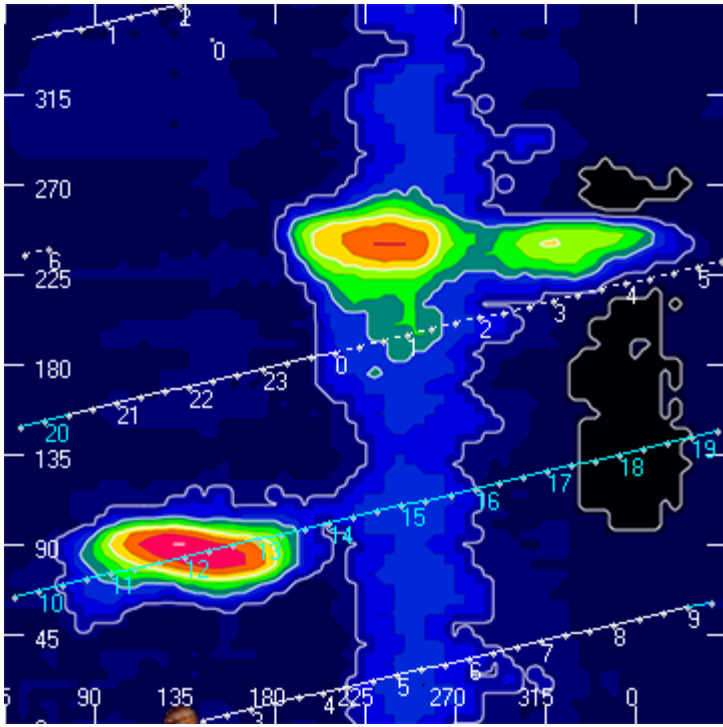
Dave

---

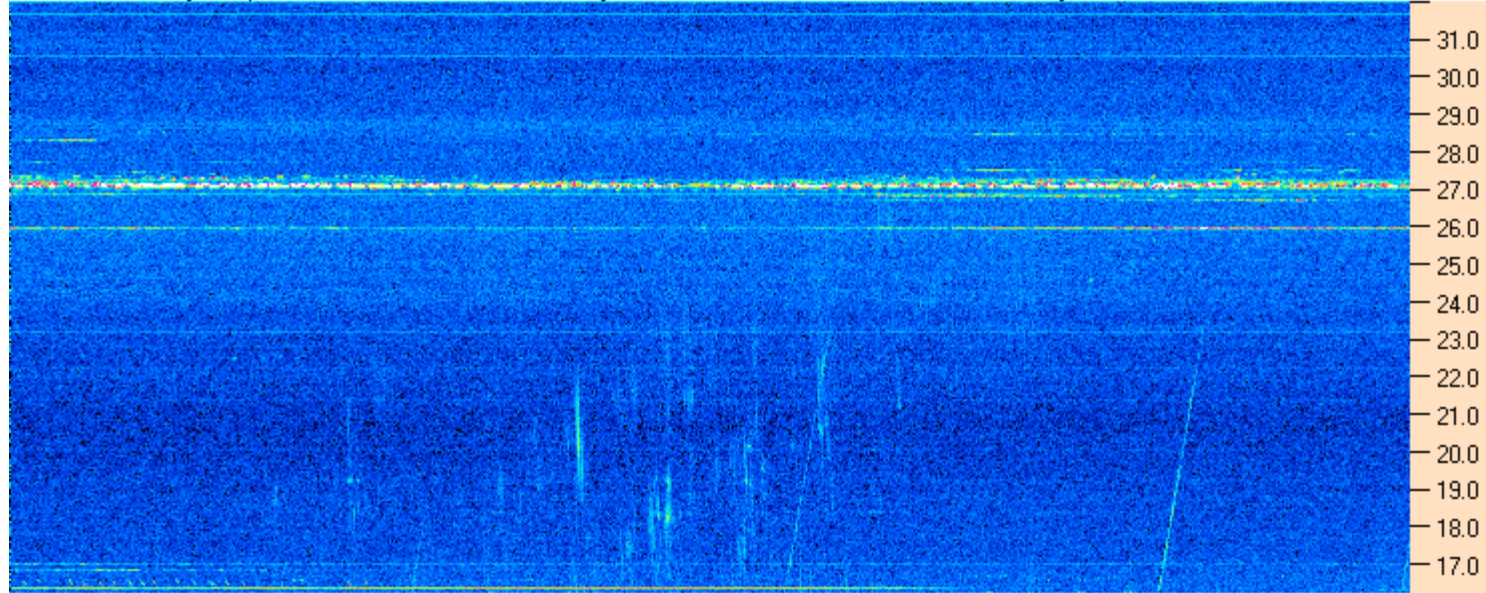
**AJ4CO Observatory 15 Apr 2016, log entry 689**

---





AJ4CO Observatory 15 Apr 2016 - DPS 30 kHz IF on TFD Array in CP Mode - RCP MC +13 dB Correction Array 2014 12 18 B.csv Offset 2050 Gain 5.0



01:45:00 01:51:26 01:57:51 02:04:17 02:10:43 02:17:09 02:23:34 02:30:00

AJ4CO Observatory 15 Apr 2016 - DPS 30 kHz IF on TFD Array in CP Mode - LCP MC +13 dB Correction Array 2014 12 18 B.csv Offset 2050 Gain 5.0

