

Subject: [radiojove-data] 11 Apr 2016 non-Io-A

From: Dave Typinski <davetyp@typnet.net>

Date: 04/17/2016 22:22

To: RadioJove-Data <radiojove-data@lists.nasa.gov>

Here's some weak non-Io-A from Monday morning a week ago.

RCP dominant L bursting 0301-0411 UTC from 16 to 19 MHz, negative drift emission envelopes.

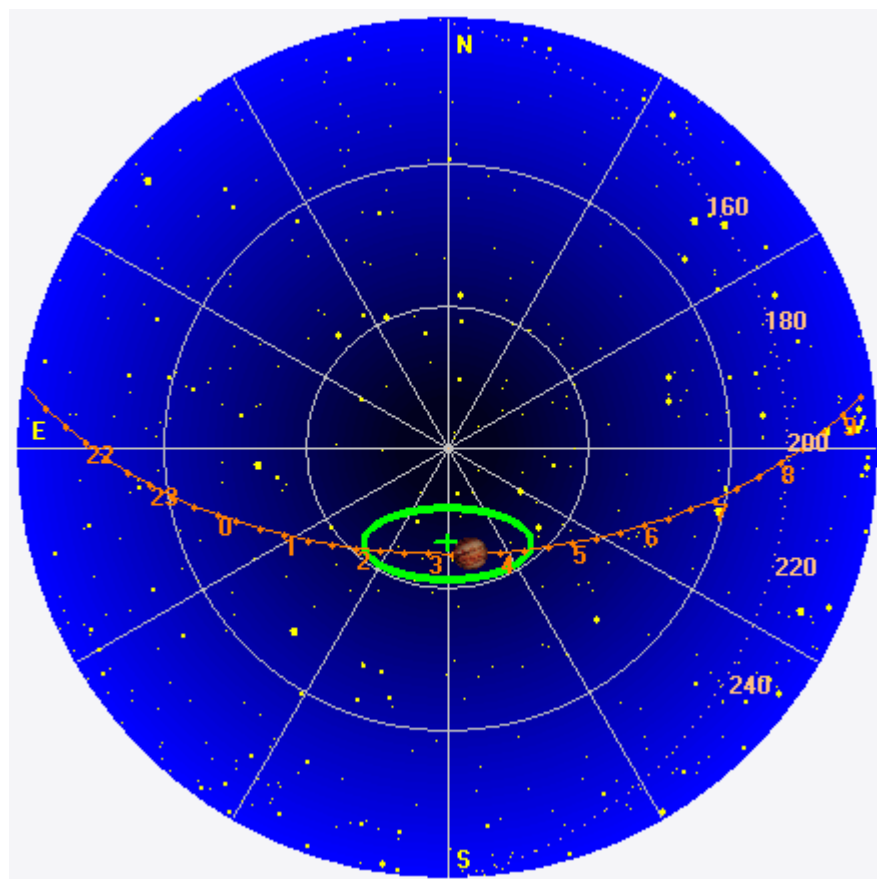
Jupiter was -5° to $+13^\circ$ off axis.

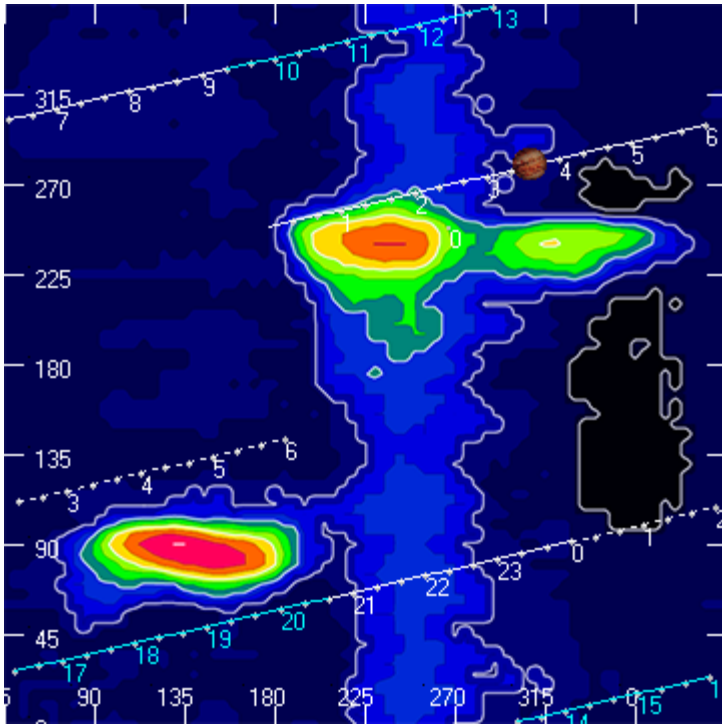
Jupiter was trailing the Sun by 143° .

--

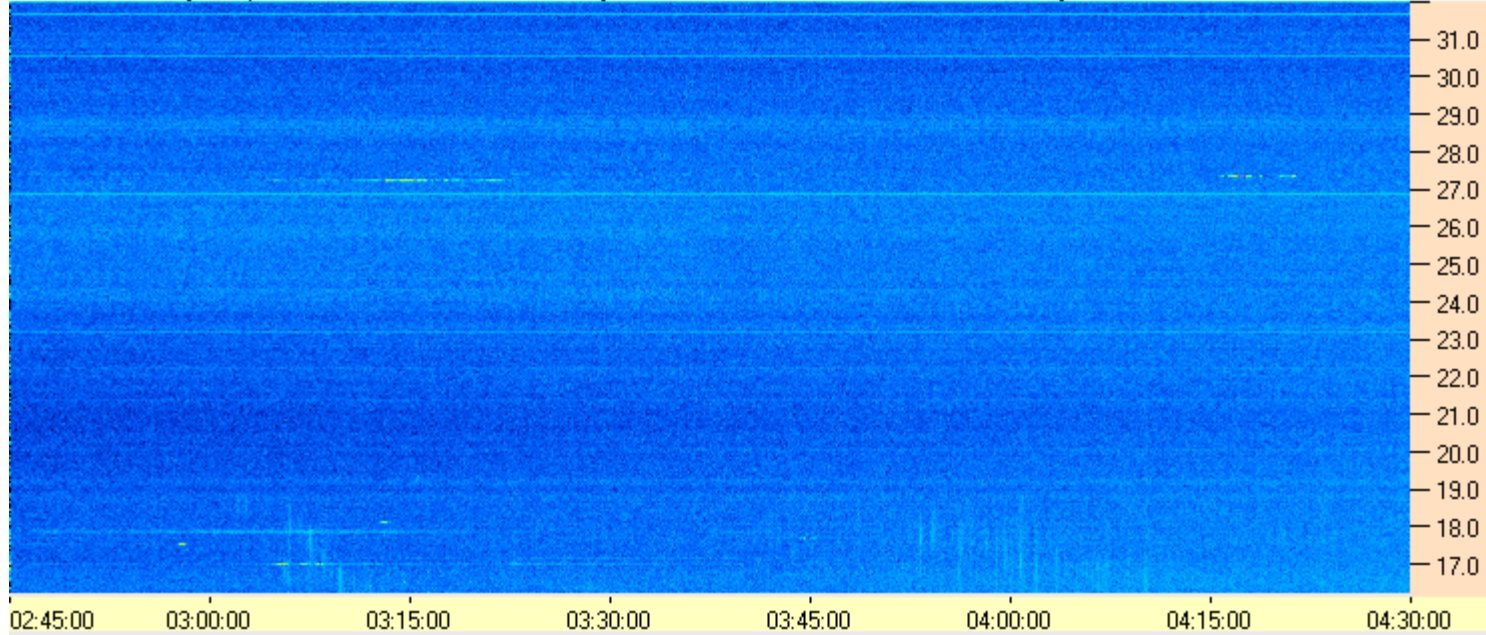
Dave

AJ4CO Observatory 11 Apr 2016, log entry 687





AJ4CO Observatory 11 Apr 2016 - DPS 30 kHz IF on TFD Array in CP Mode - RCP MC +13 dB Correction Array 2014 12 18 B.csv Offset 2050 Gain 5.0



AJ4CO Observatory 11 Apr 2016 - DPS 30 kHz IF on TFD Array in CP Mode - LCP MC +13 dB Correction Array 2014 12 18 B.csv Offset 2050 Gain 5.0

