

Subject: [radiojove-data] 05 Apr 2016 non-Io-B

From: Dave Typinski <davetyp@typnet.net>

Date: 04/06/2016 22:07

To: RadioJove-Data <radiojove-data@lists.nasa.gov>

Adding to Tom's nice report, here's some non-Io-B from Monday morning.

RCP dominant L bursting 0341-0442 UTC from 16 to 24 MHz, positive drift emission envelopes.

Brief overloading from CB band emission, probably a mobile rig on the road by the observatory.

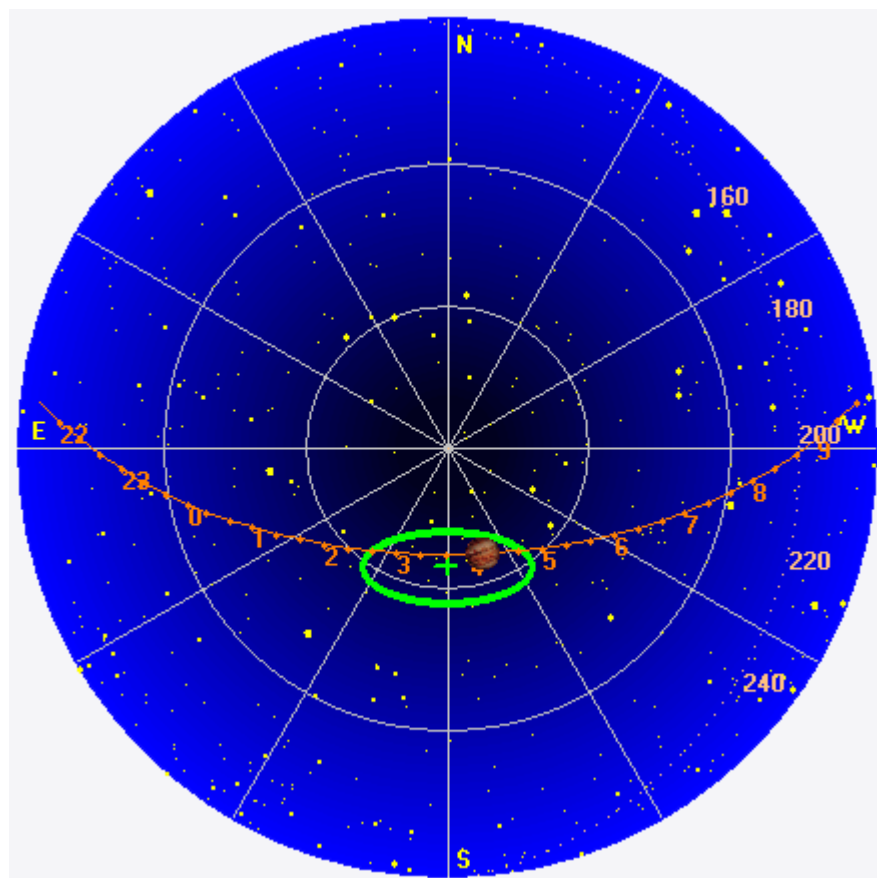
Jupiter was -2° to $+15^\circ$ off axis.

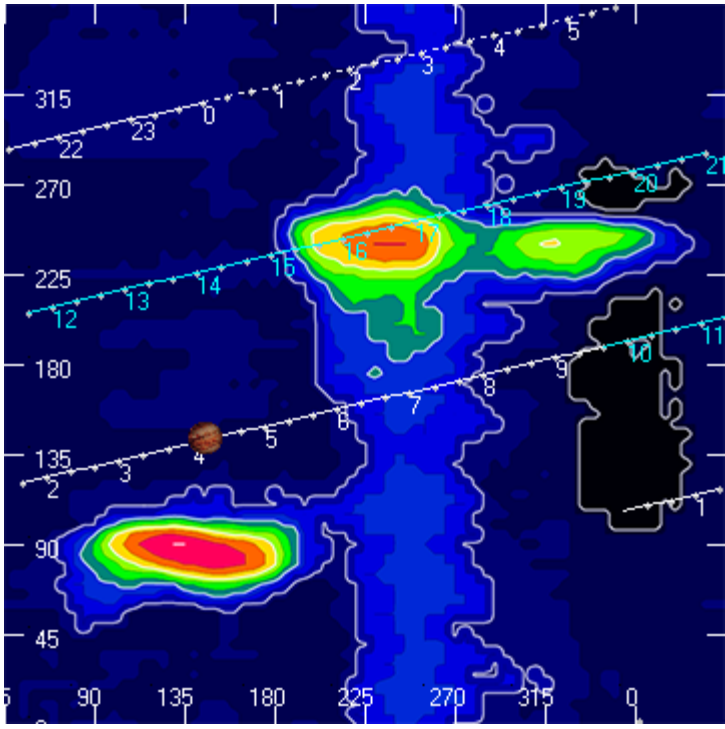
Jupiter was trailing the Sun by 149° .

--

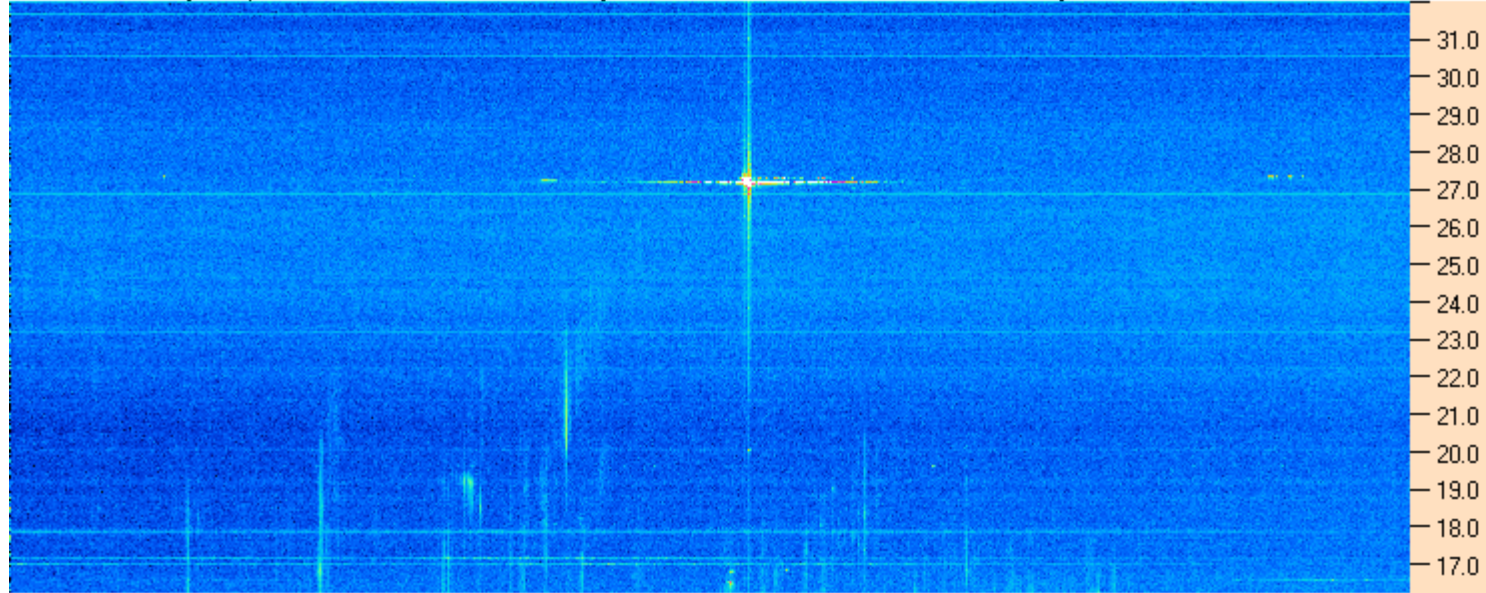
Dave

AJ4CO Observatory 05 Apr 2016, log entry 679





AJ4CO Observatory 05 Apr 2016 - DPS 30 kHz IF on TFD Array in CP Mode - RCP MC +13 dB Correction Array 2014 12 18 B.csv Offset 2100 Gain 5.0



03:30:00 03:42:51 03:55:43 04:08:34 04:21:26 04:34:17 04:47:08 05:00:00

AJ4CO Observatory 05 Apr 2016 - DPS 30 kHz IF on TFD Array in CP Mode - LCP MC +13 dB Correction Array 2014 12 18 B.csv Offset 2100 Gain 5.0

