

Subject: [radiojove-data] 01 Apr 2016 non-Io-A

From: Dave Typinski <davetyp@typnet.net>

Date: 04/03/2016 11:15

To: RadioJove-Data <radiojove-data@lists.nasa.gov>

Here's some non-Io-A from Friday morning.

RCP dominant L bursting 0349-0412 UTC from 16 to 20 MHz, negative drift emission envelope.

Too low / weak for the strip chart.

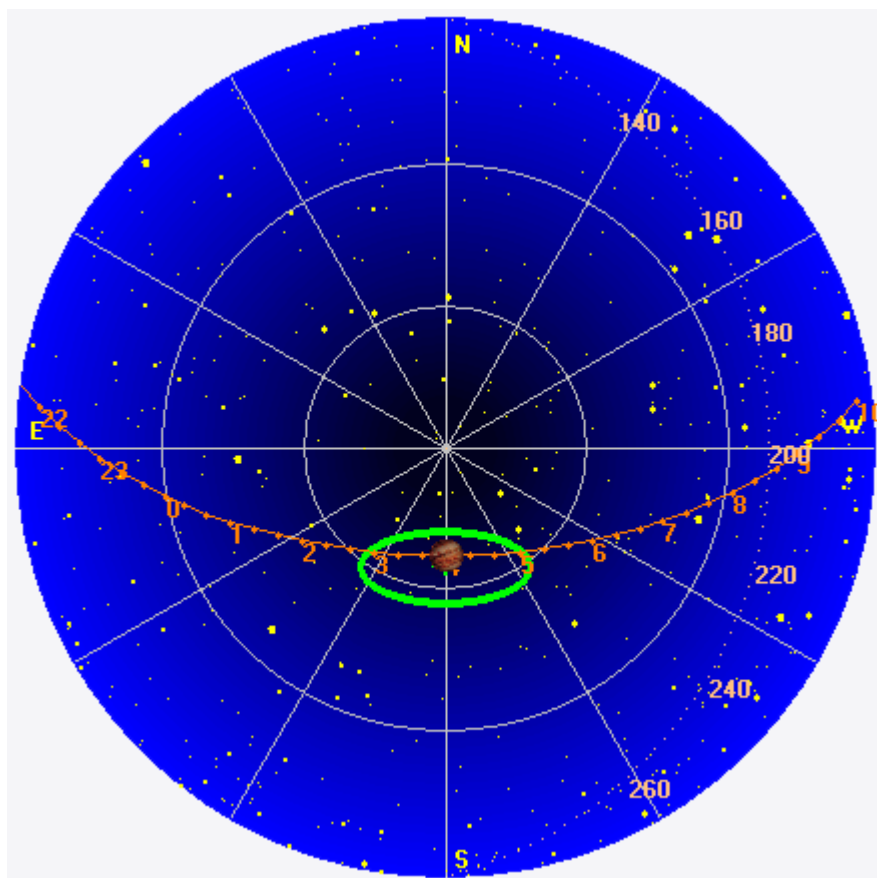
Jupiter was -3° to $+4^\circ$ off axis.

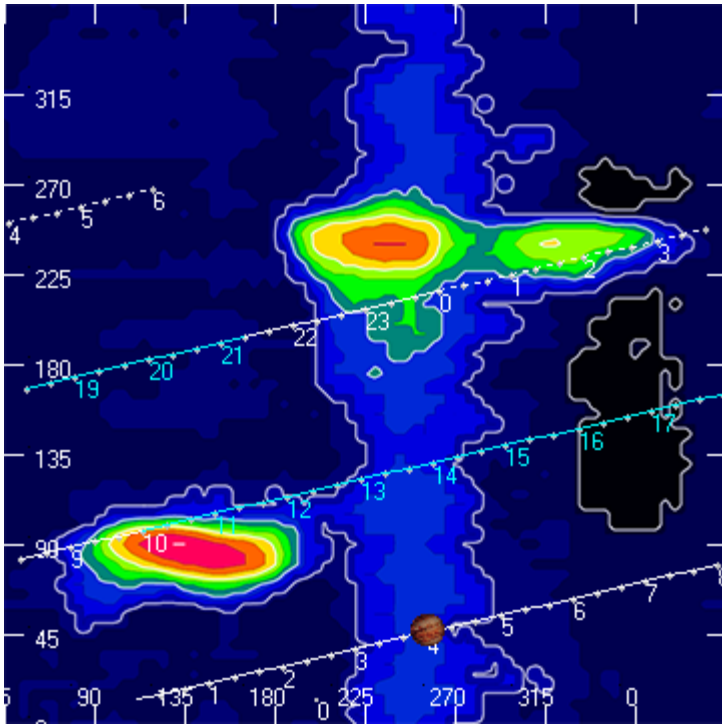
Jupiter was trailing the Sun by 154° .

--

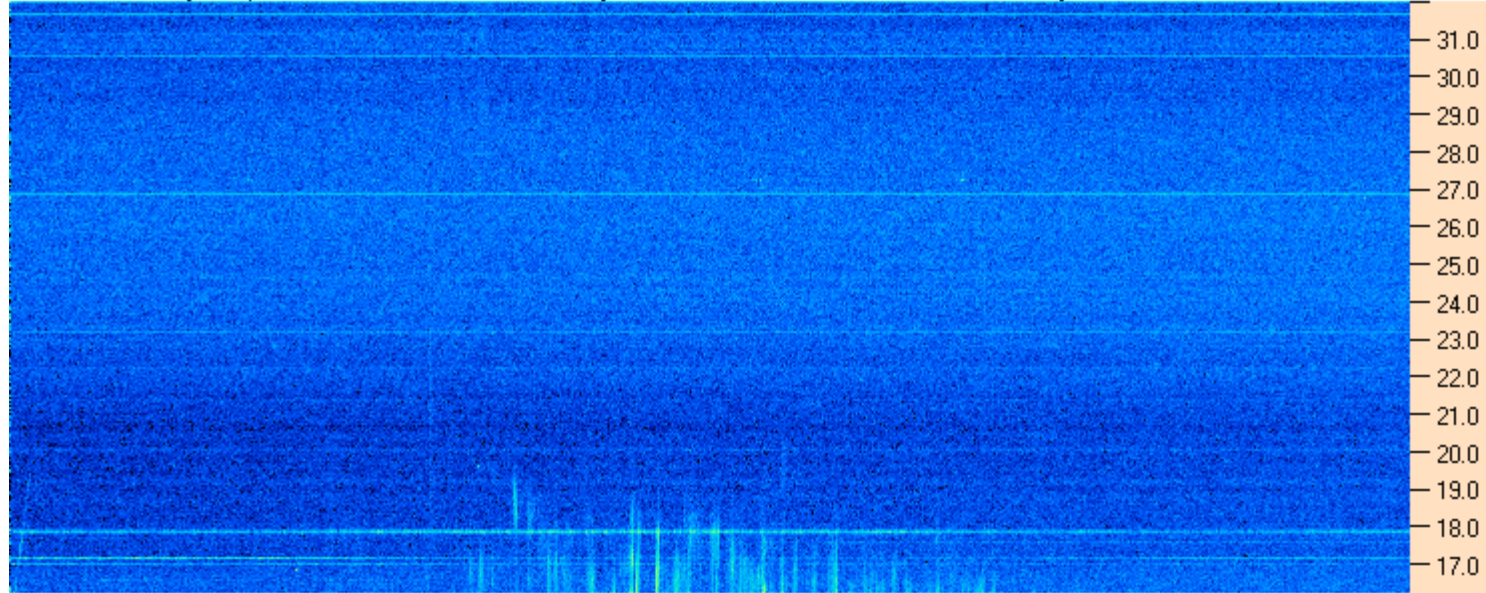
Dave

AJ4CO Observatory 01 Apr 2016, log entry 672





AJ4CO Observatory 01 Apr 2016 - DPS 30 kHz IF on TFD Array in CP Mode - RCP MC +13 dB Correction Array 2014 12 18 B.csv Offset 2050 Gain 5.0



03:30:00 03:38:34 03:47:09 03:55:43 04:04:17 04:12:51 04:21:26 04:30:00

AJ4CO Observatory 01 Apr 2016 - DPS 30 kHz IF on TFD Array in CP Mode - LCP MC +13 dB Correction Array 2014 12 18 B.csv Offset 2050 Gain 5.0

