

Subject: [radiojove-data] 30 Mar 2016 non-Io-A / non-Io-C / Vir A

From: Dave Typinski <davetyp@typnet.net>

Date: 04/01/2016 23:53

To: RadioJove-Data <radiojove-data@lists.nasa.gov>

Adding to Jim & Tom's nice reports, here's some non-Io-A, non-Io-C, and Vir A scintillation from Wednesday morning.

RCP dominant L bursting 0315-0403 UTC from 16 to 24 MHz, negative drift emission envelopes. (non-Io-A)

LCP dominant L bursting 0358-0450 UTC from 16 to 21 MHz, negative drift emission envelopes. (non-Io-C)

Virgo A scintillation faint in the background during / after non-Io-C emission.

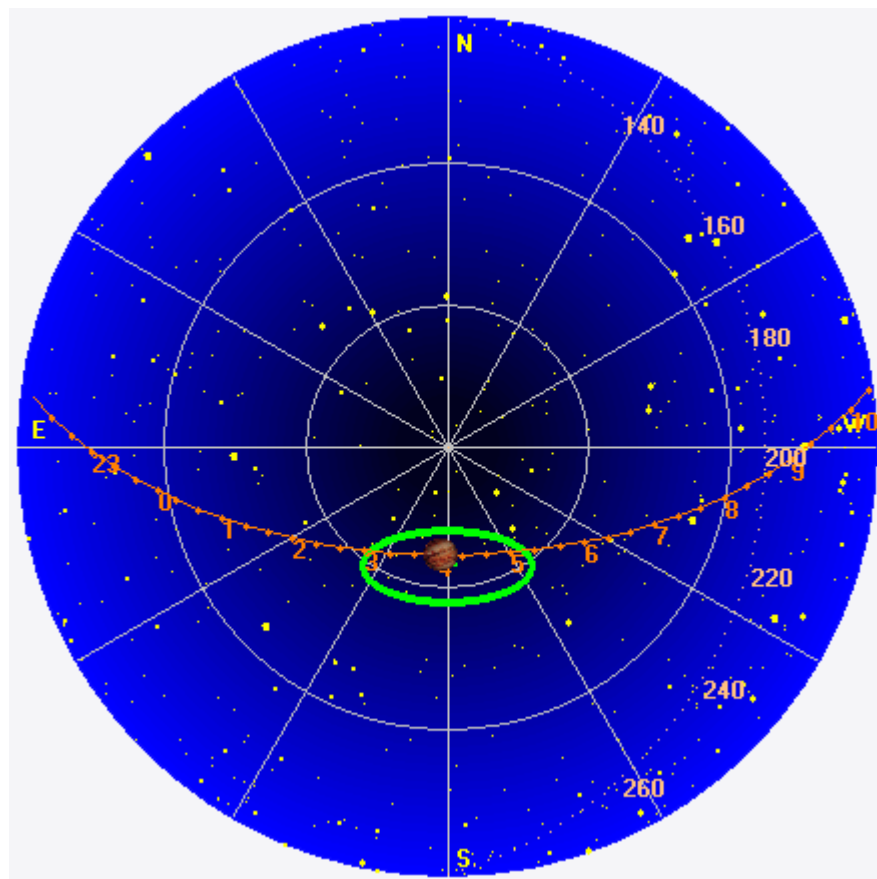
Jupiter was -13° to $+11^\circ$ off axis.

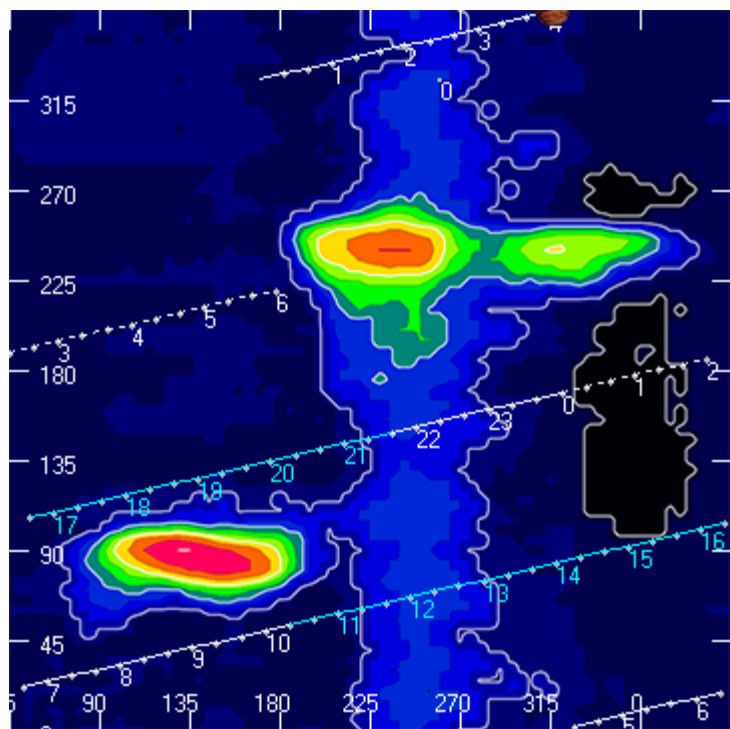
Jupiter was trailing the Sun by 156° .

--

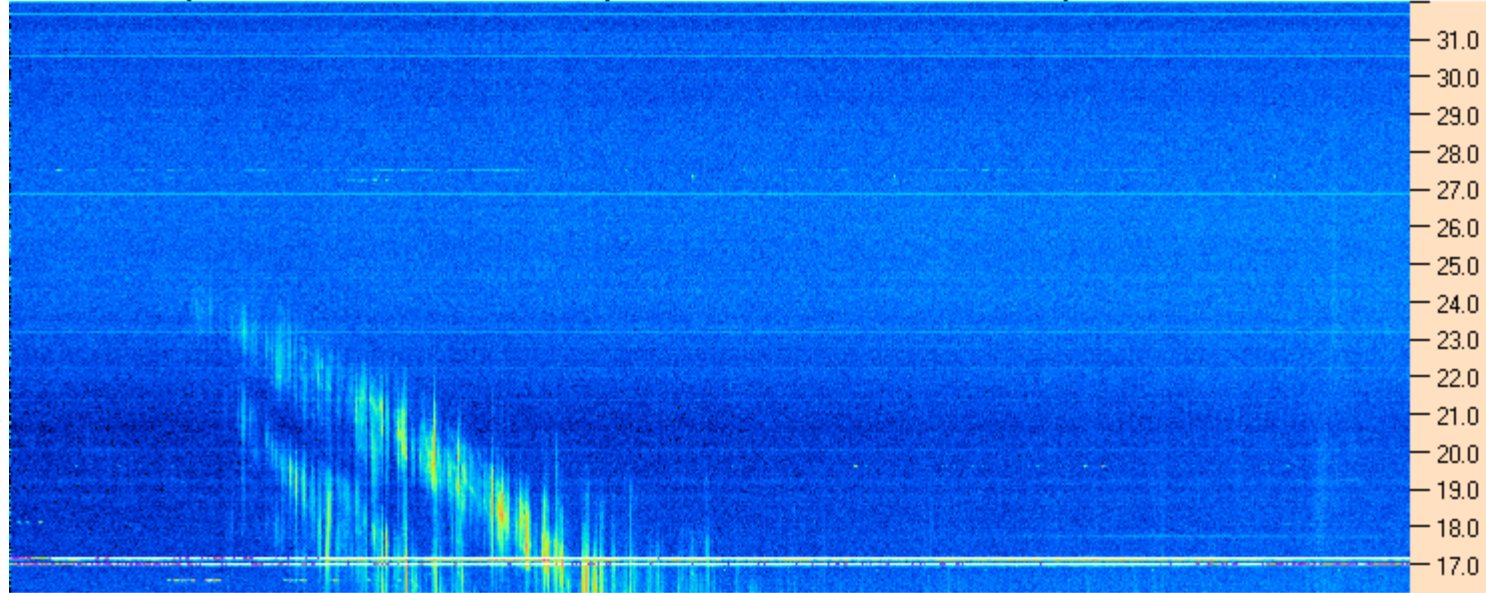
Dave

AJ4CO Observatory 30 Mar 2016, log entry 670 - 671





AJ4CO Observatory 29 Mar 2016 - DPS 30 kHz IF on TFD Array in CP Mode - RCP MC +13 dB Correction Array 2014 12 18 B.csv Offset 2050 Gain 5.0



03:00:00 03:17:09 03:34:17 03:51:26 04:08:34 04:25:43 04:42:51 05:00:00

AJ4CO Observatory 29 Mar 2016 - DPS 30 kHz IF on TFD Array in CP Mode - LCP MC +13 dB Correction Array 2014 12 18 B.csv Offset 2050 Gain 5.0

