

**Subject:** [radiojove-data] 27 Mar 2016 Io-B/D

**From:** Dave Typinski <davetyp@typnet.net>

**Date:** 04/01/2016 23:51

**To:** RadioJove-Data <radiojove-data@lists.nasa.gov>

Adding to Jim & Tom's nice reports, here's some Io-B/D from Sunday morning.

RCP narrow band S burst trains 0120-0237 UTC from 22 to 31 MHz, positive drift emission envelope (vertex early arcs). (Io-B)

RCP dominant L bursting 0133-0402 UTC from 16 to 29 MHz, positive drift emission envelope (vertex early arcs). (Io-B)

LCP dominant N event 0155-0302 UTC from 21 to 23 MHz, negative drift emission envelope. (Io-D)

LCP dominant L bursting 0337-0531 from 16 to 18 MHz, positive drift emission envelope. (Io-D)

Did some manual beam steering during the storm as seen in the sky view and the different background levels in the first spectrogram.

Regional lightning present.

Jupiter was  $-42^\circ$  to  $+18^\circ$  off axis.

Jupiter was trailing the Sun by  $159^\circ$ .

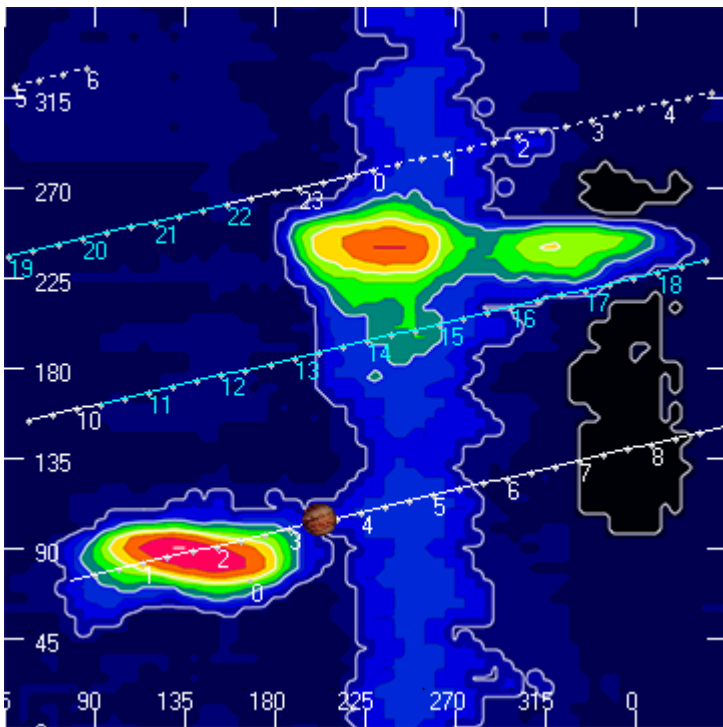
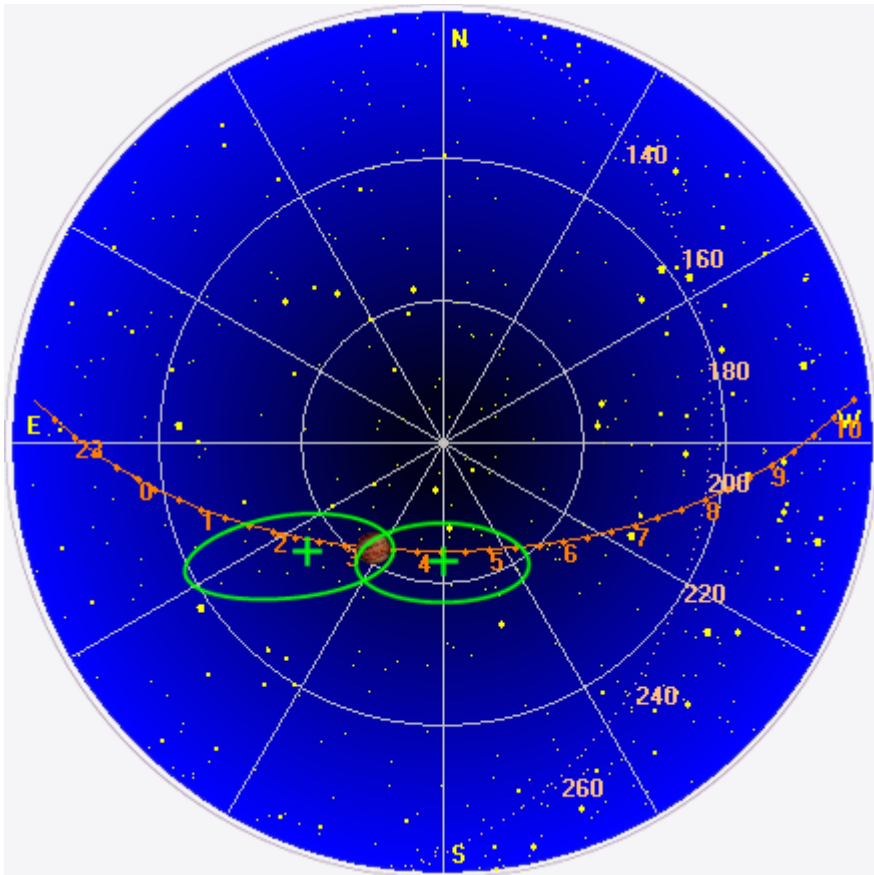
--

Dave

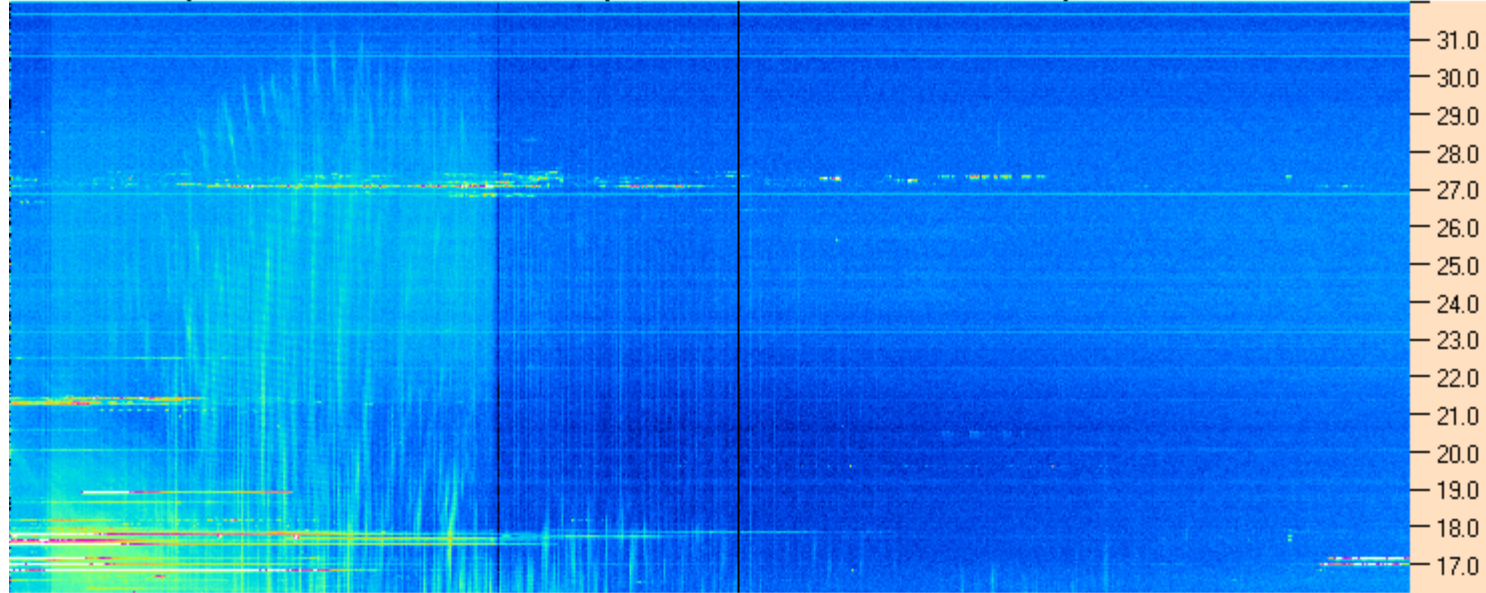
---

**AJ4CO Observatory 27 Mar 2016, log entry 664 - 667**

---



AJ4CO Observatory 27 Mar 2016 - DPS 30 kHz IF on TFD Array in CP Mode - RCP MC +13 dB Correction Array 2014 12 18 B.csv Offset 2050 Gain 5.0



AJ4CO Observatory 27 Mar 2016 - DPS 30 kHz IF on TFD Array in CP Mode - LCP MC +13 dB Correction Array 2014 12 18 B.csv Offset 2050 Gain 5.0

