

Subject: [radiojove-data] 26 Mar 2016 Io-C

From: Dave Typinski <davetyp@typnet.net>

Date: 04/01/2016 23:50

To: RadioJove-Data <radiojove-data@lists.nasa.gov>

Adding to Tom & Wes's nice reports, here's some Io-C from Saturday morning.

LCP dominant N event 0122-0208 UTC from 17 to 21 MHz, negative drift emission envelope.

LCP dominant L bursting 0135-0229 UTC from 16 to 20 MHz, negative drift emission envelope.

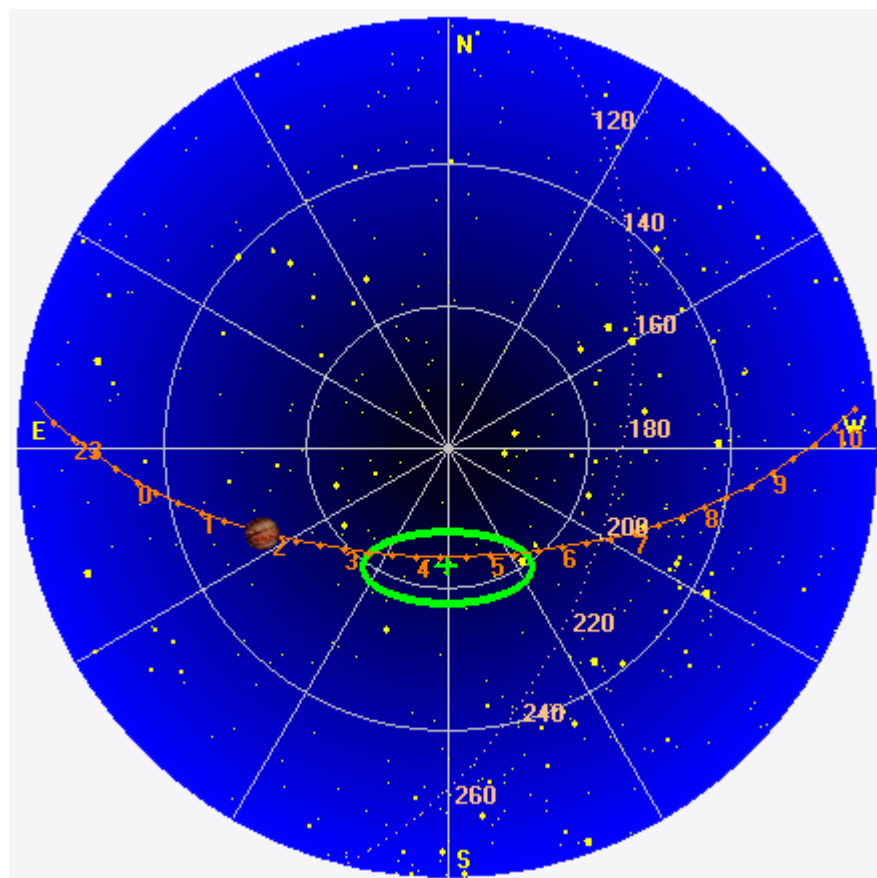
Jupiter was -46° to -29° off axis.

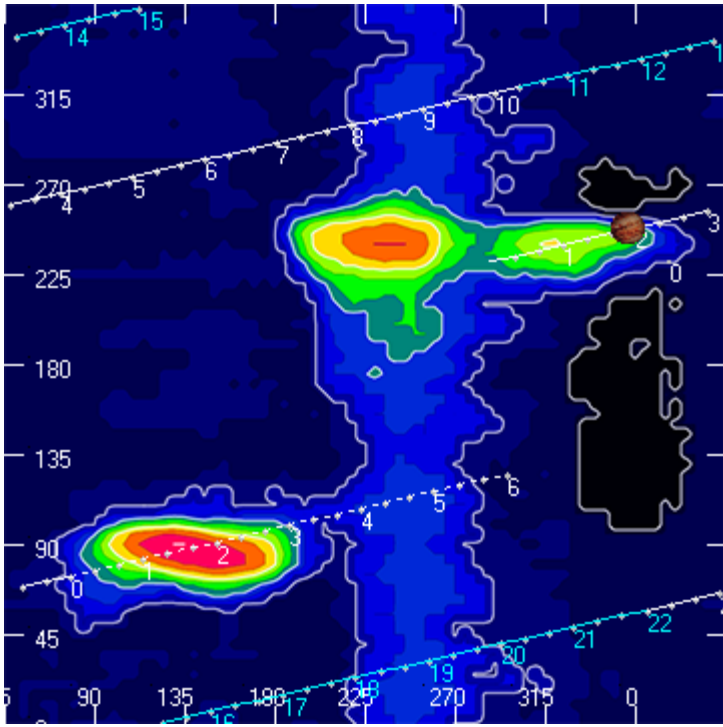
Jupiter was trailing the Sun by 160° .

--

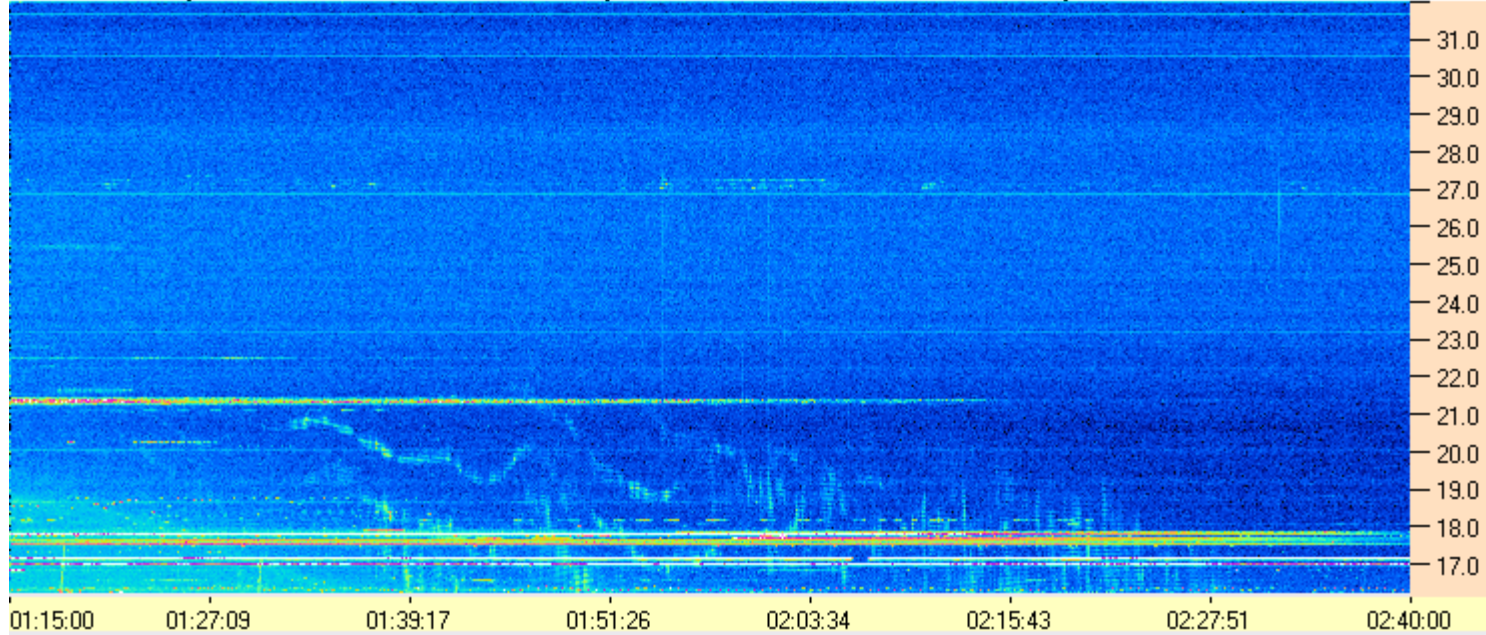
Dave

AJ4CO Observatory 26 Mar 2016, log entry 662 - 663





AJ4CO Observatory 26 Mar 2016 - DPS 30 kHz IF on TFD Array in CP Mode - RCP MC +13 dB Correction Array 2014 12 18 B.csv Offset 2050 Gain 5.0



AJ4CO Observatory 26 Mar 2016 - DPS 30 kHz IF on TFD Array in CP Mode - LCP MC +13 dB Correction Array 2014 12 18 B.csv Offset 2050 Gain 5.0

