

Subject: [radiojove-data] 13 Mar 2016 non-Io-A

From: Dave Typinski <davetyp@typnet.net>

Date: 03/14/2016 00:40

To: RadioJove-Data <radiojove-data@lists.nasa.gov>

Adding to Jim's nice report, here's some weak non-Io-A from Sunday morning.

RCP dominant L bursting 0426-0509 UTC from 16 to 20 MHz, negative drift emission envelopes.

This would normally be considered non-Io-C if we go by phase plane position alone, but the RCP nature of the emission indicated the A source -- and it's not too far out from the normal non-Io-A region of the plane.

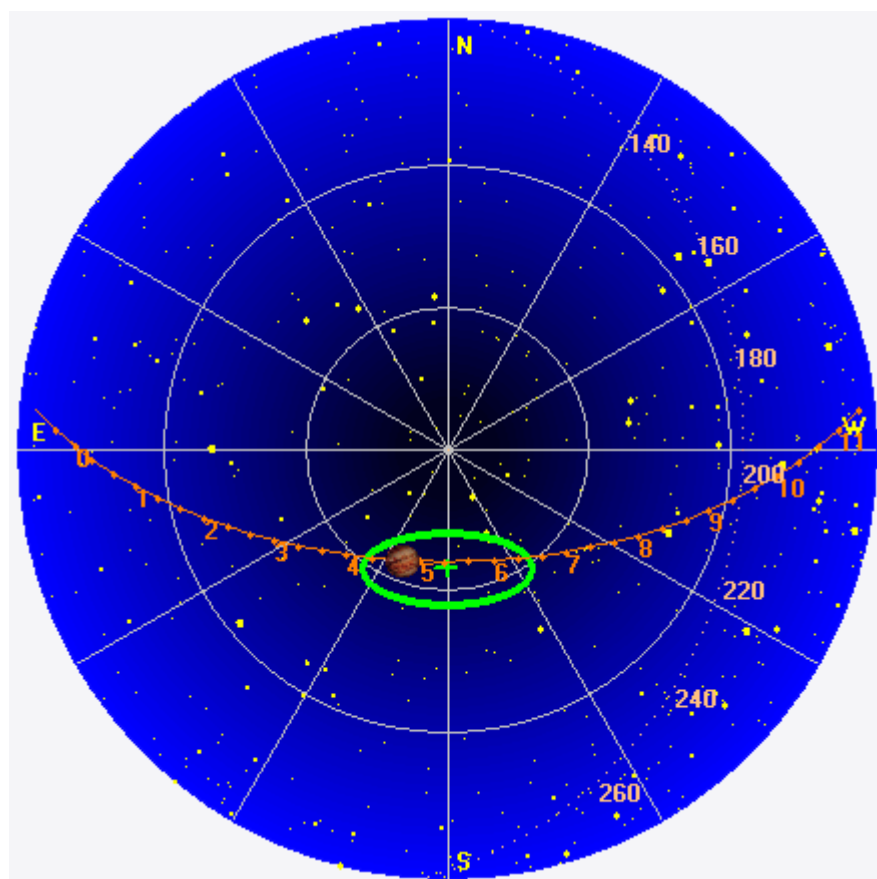
Jupiter was -14° to -4° off axis.

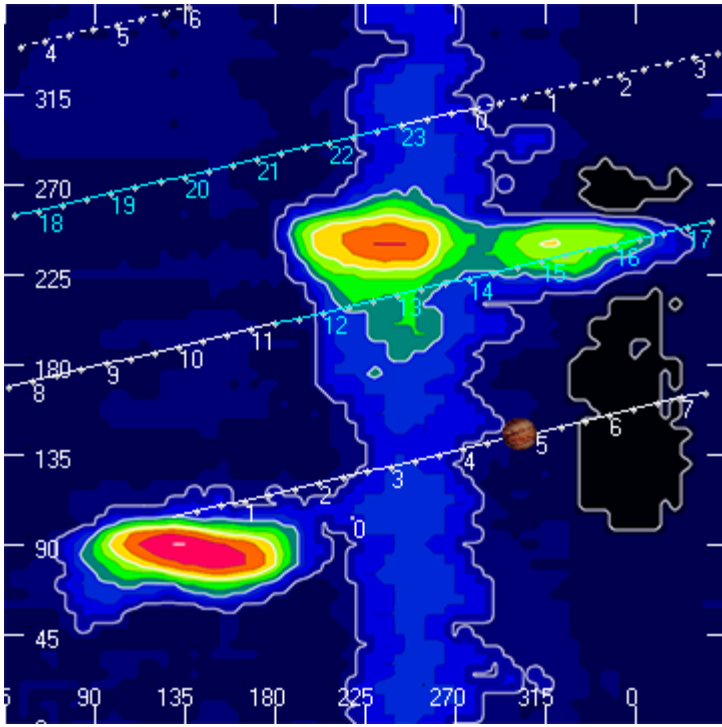
Jupiter was trailing the Sun by 174° .

--

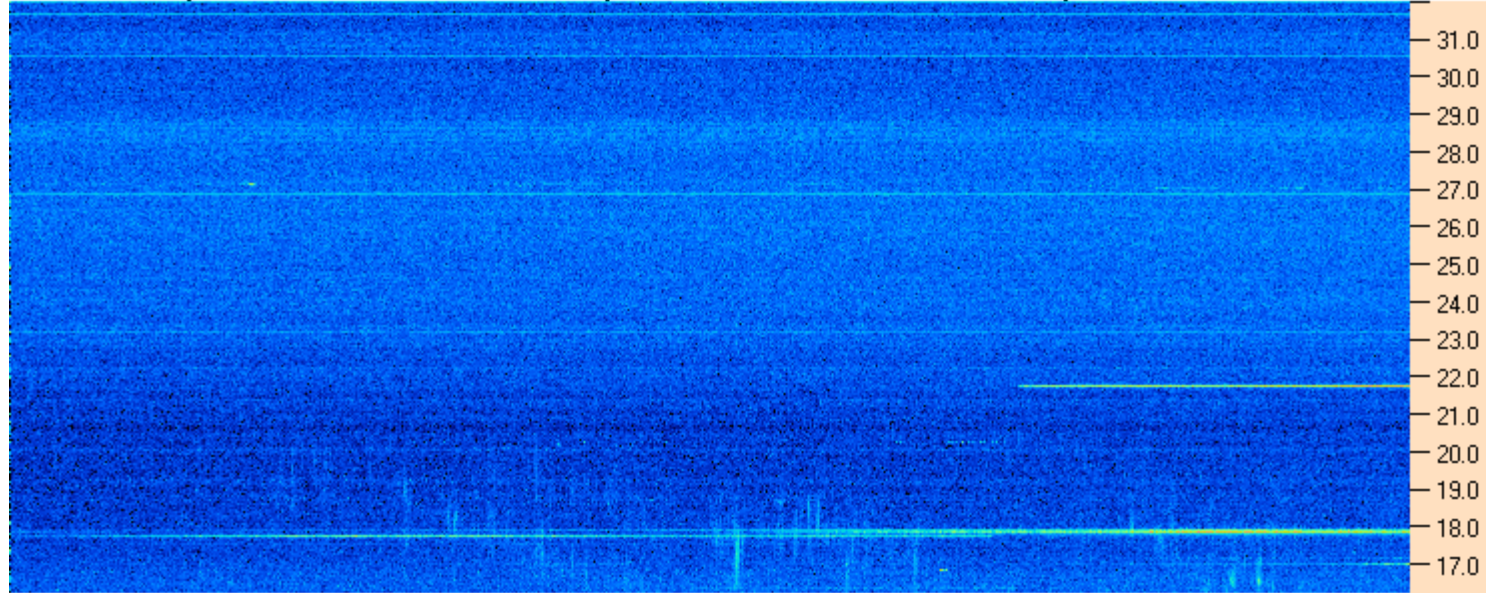
Dave

AJ4CO Observatory 13 Mar 2016, log entry 650





AJ4CO Observatory 13 Mar 2016 - DPS 30 kHz IF on TFD Array in CP Mode - RCP MC +13 dB Correction Array 2014 12 18 B.csv Offset 2050 Gain 5.0



04:15:00 04:23:34 04:32:09 04:40:43 04:49:17 04:57:52 05:06:26 05:15:00

AJ4CO Observatory 13 Mar 2016 - DPS 30 kHz IF on TFD Array in CP Mode - LCP MC +13 dB Correction Array 2014 12 18 B.csv Offset 2050 Gain 5.0

