

**Subject:** [radiojove-data] 22 Feb 2016 non-Io-B, non-Io-A

**From:** Dave Typinski <davetyp@typnet.net>

**Date:** 02/25/2016 22:08

**To:** RadioJove-Data <radiojove-data@lists.nasa.gov>

Adding to Jim's nice report, here's some non-Io-B and non-Io-A from Monday morning.

RCP dominant L bursting 0421-0653 UTC from 16 to 19 MHz, positive drift emission envelope (non-Io-B).

RCP dominant L bursting 0617-0802 UTC from 16 to 22 MHz, negative drift emission envelope (non-Io-A).

Jupiter was  $-37^\circ$  to  $+18^\circ$  off axis.

Jupiter was leading the Sun by  $163^\circ$ .

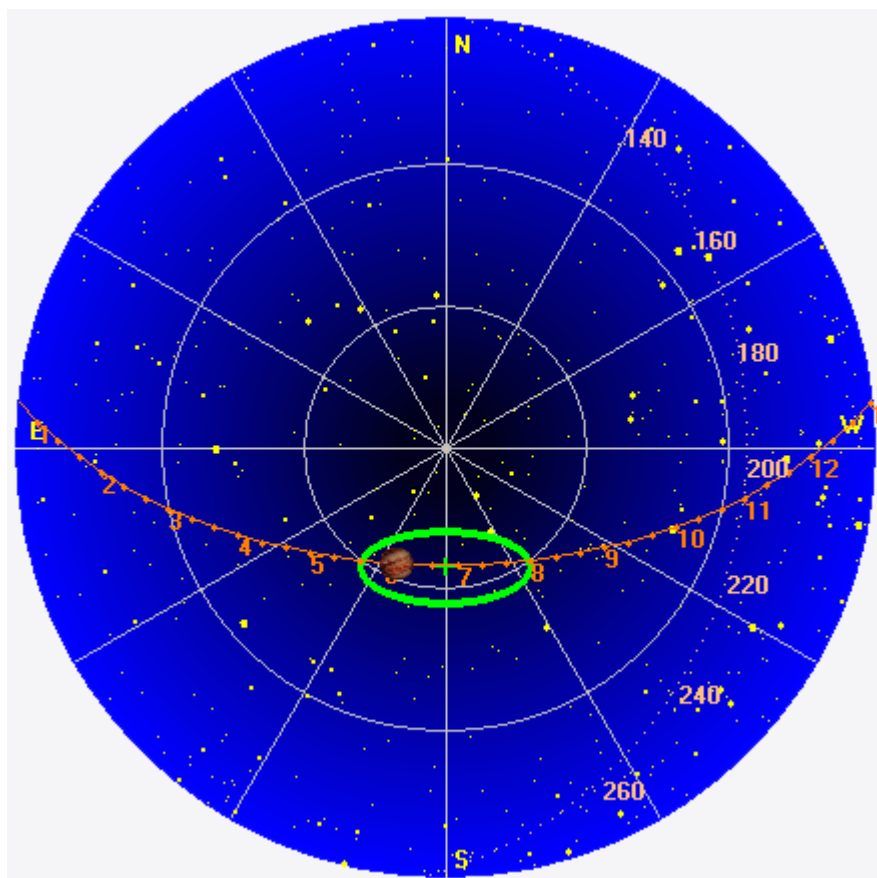
--

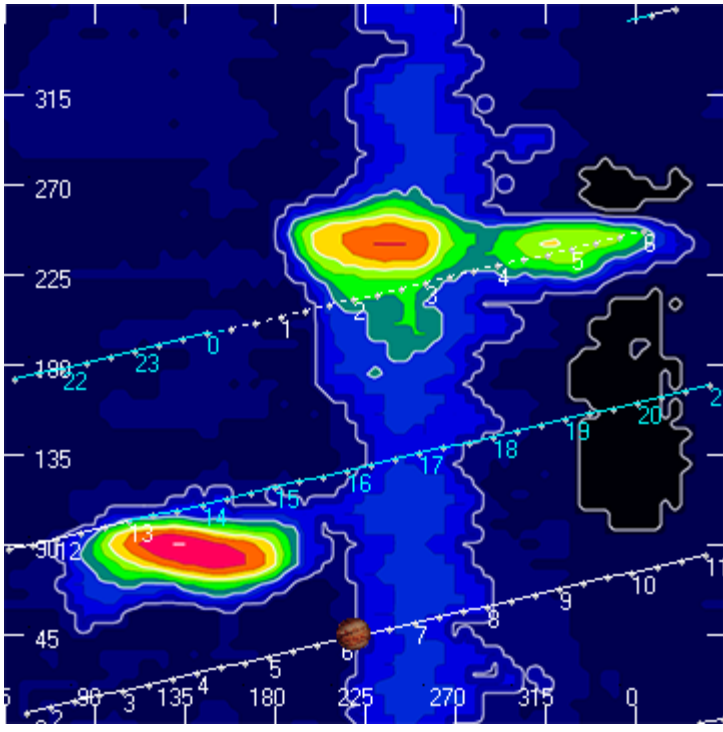
Dave

---

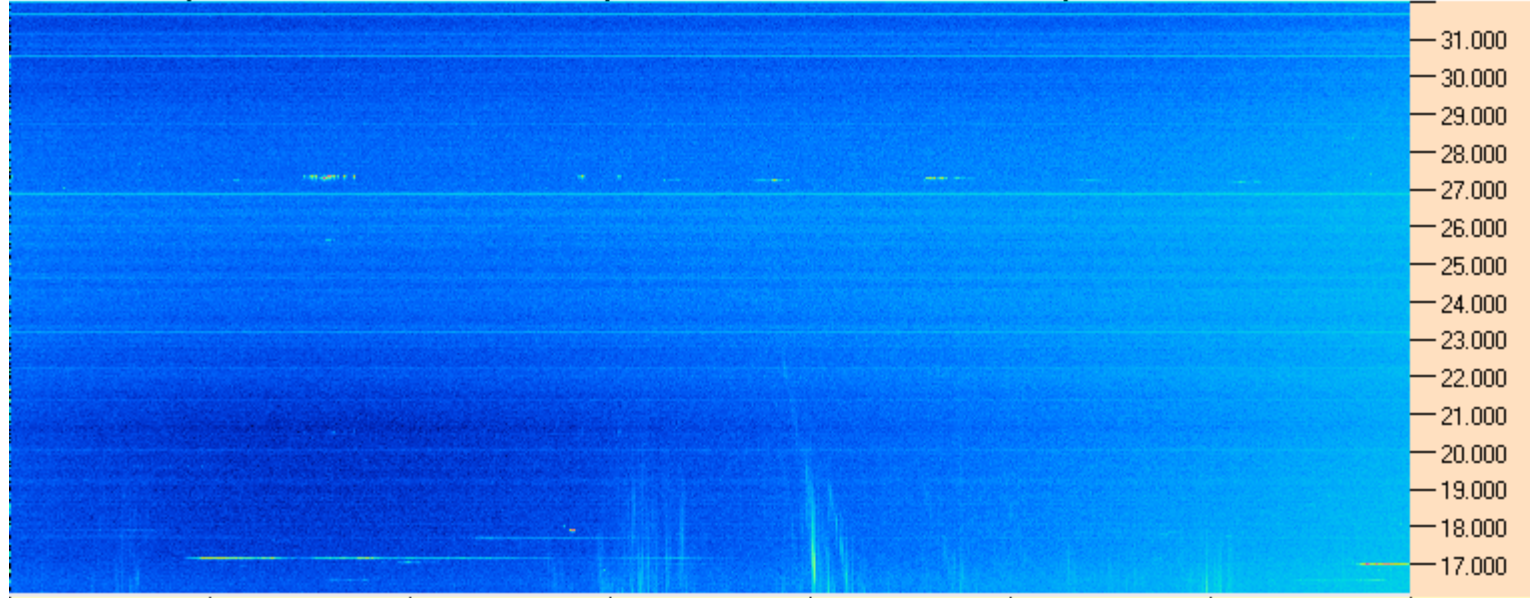
**AJ4CO Observatory 22 Feb 2016, log entry 614 - 615**

---

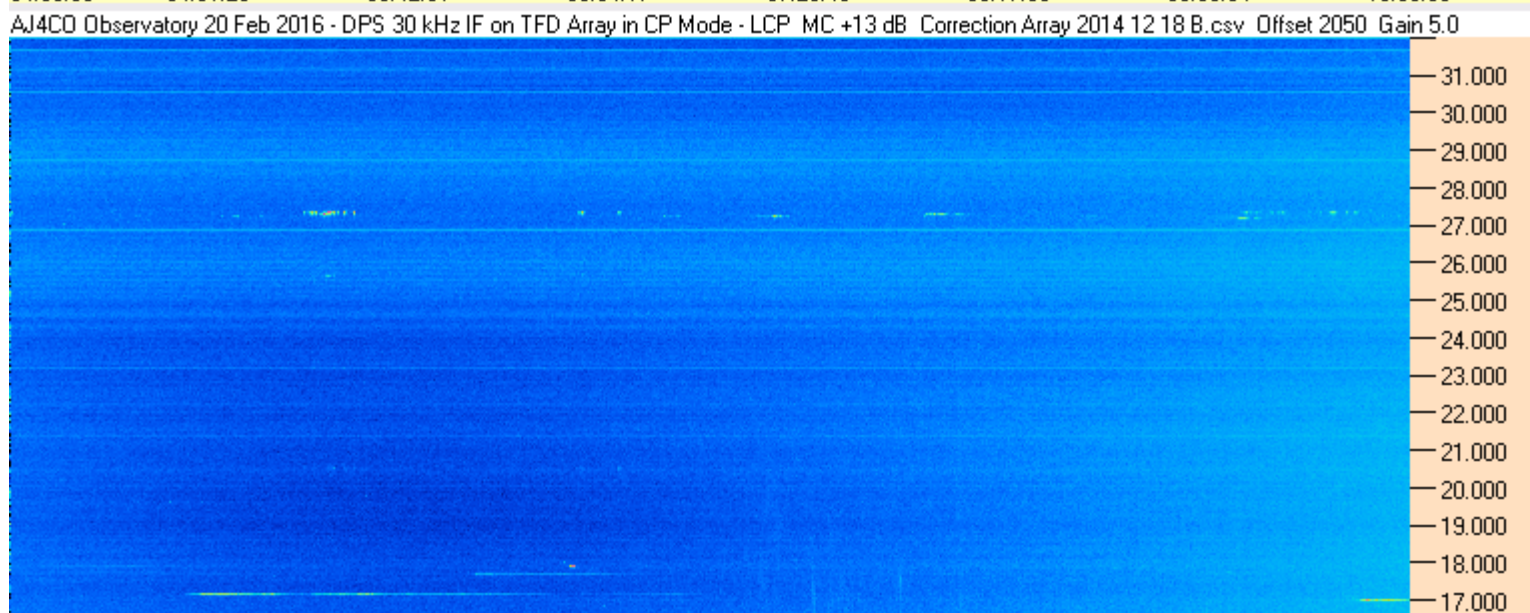




AJ4CO Observatory 20 Feb 2016 - DPS 30 kHz IF on TFD Array in CP Mode - RCP MC +13 dB Correction Array 2014 12 18 B.csv Offset 2050 Gain 5.0



AJ4CO Observatory 20 Feb 2016 - DPS 30 kHz IF on TFD Array in CP Mode - LCP MC +13 dB Correction Array 2014 12 18 B.csv Offset 2050 Gain 5.0



04:00:00 04:51:26 05:42:51 06:34:17 07:25:43 08:17:09 09:08:34 10:00:00

