

**Subject:** [radiojove-data] 20 Feb 2016 non-Io-A/C

**From:** Dave Typinski <davetyp@typnet.net>

**Date:** 02/21/2016 21:28

**To:** RadioJove-Data <radiojove-data@lists.nasa.gov>

Adding to Tom's nice report, here's some non-Io-A and non-Io-C from Saturday morning.

RCP dominant L bursting 0527-0607 UTC from 16 to 19 MHz, negative drift emission envelope (non-Io-A).

LCP dominant L bursting 0604-0624 UTC from 16 to 18 MHz, negative drift emission envelope (non-Io-C).

Jupiter was  $-23^\circ$  to  $-9^\circ$  off axis.

Jupiter was leading the Sun by  $161^\circ$ .

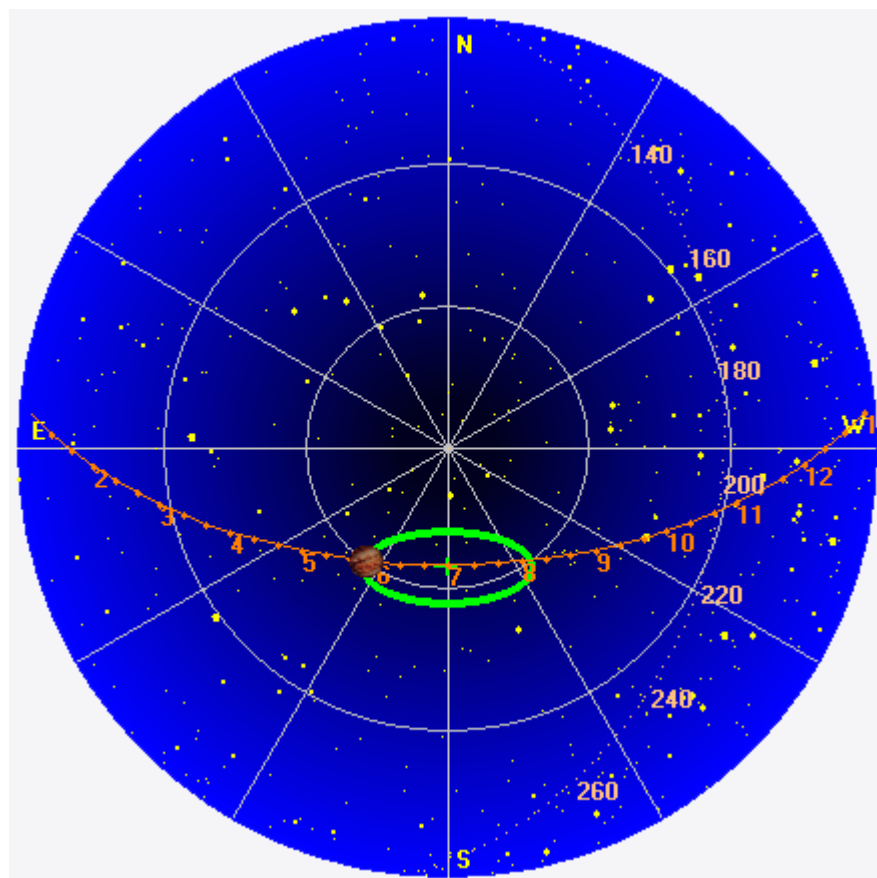
--

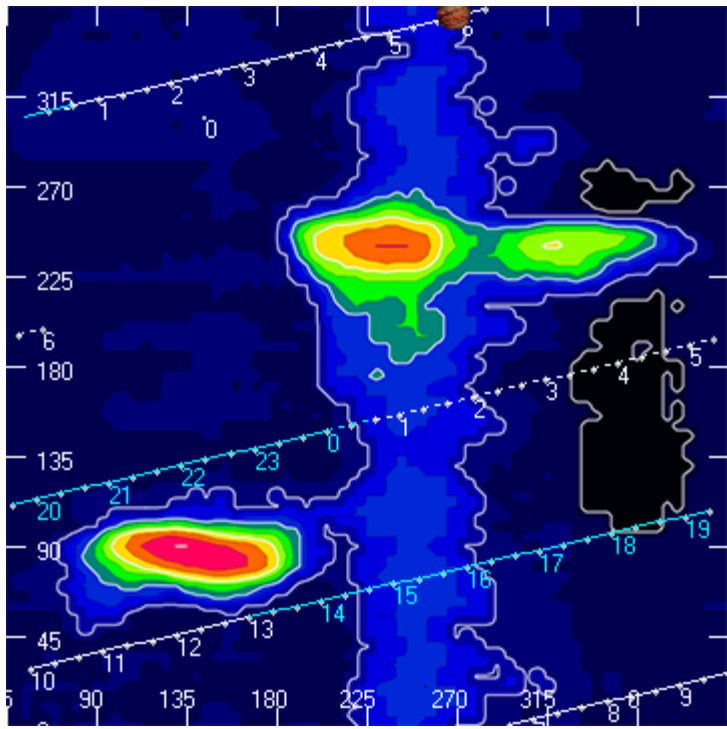
Dave

---

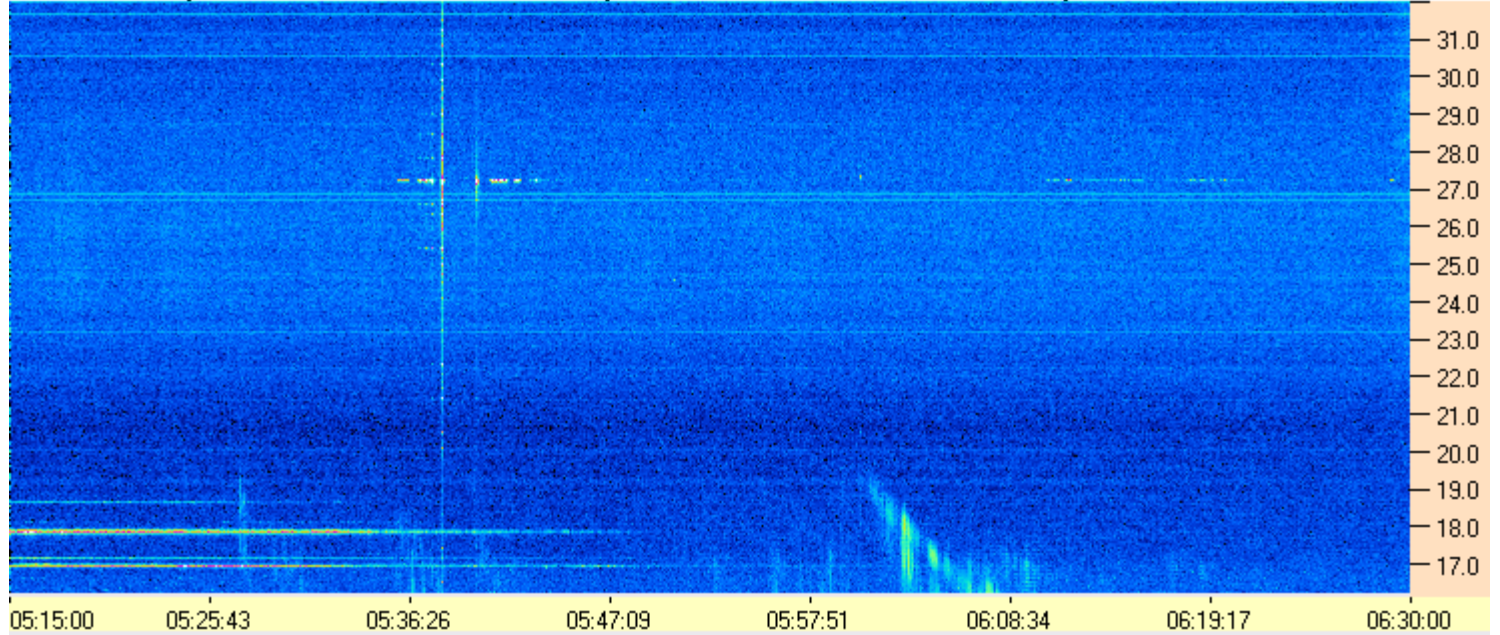
**AJ4CO Observatory 20 Feb 2016, log entry 612 - 613**

---





AJ4CO Observatory 20 Feb 2016 - DPS 30 kHz IF on TFD Array in CP Mode - RCP MC +13 dB Correction Array 2014 12 18 B.csv Offset 2050 Gain 5.0



AJ4CO Observatory 20 Feb 2016 - DPS 30 kHz IF on TFD Array in CP Mode - LCP MC +13 dB Correction Array 2014 12 18 B.csv Offset 2050 Gain 5.0

