

Subject: [radiojove-data] 19 Feb 2016 non-Io-A

From: Dave Typinski <davetyp@typnet.net>

Date: 02/20/2016 18:13

To: RadioJove-Data <radiojove-data@lists.nasa.gov>

Adding to Tom & Nathan's nice reports, here's some weak non-Io-A from Friday morning.

RCP dominant L bursting 0808-1000 UTC from 16 to 26 MHz, negative drift emission envelopes.

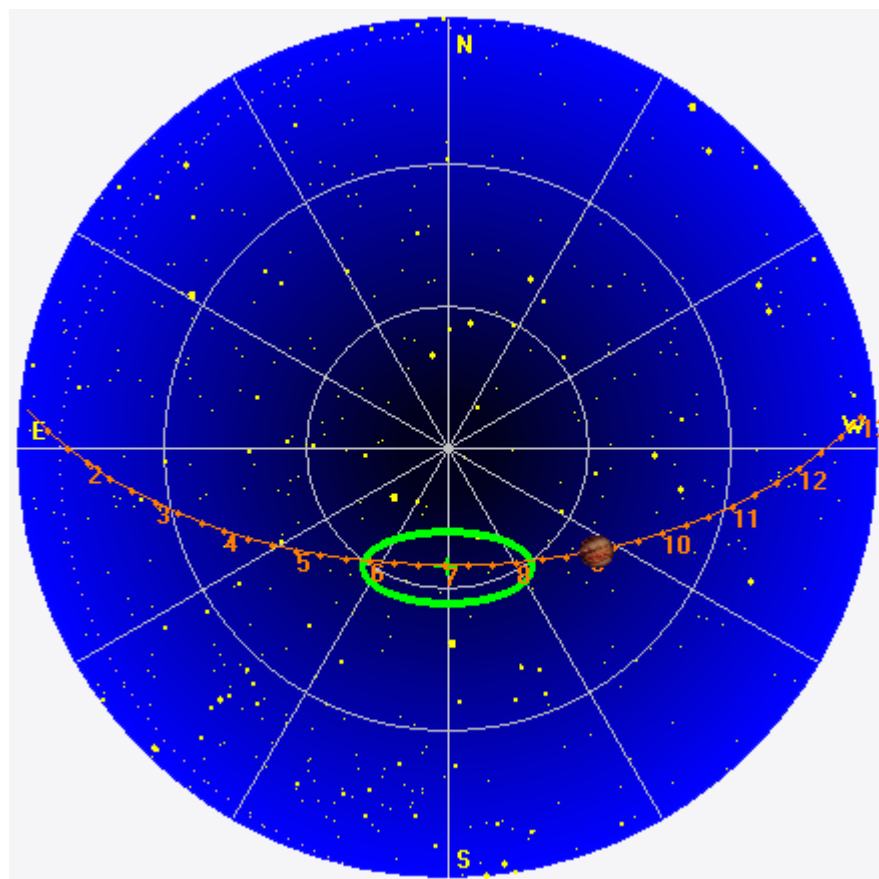
Jupiter was +16° to +44° off axis.

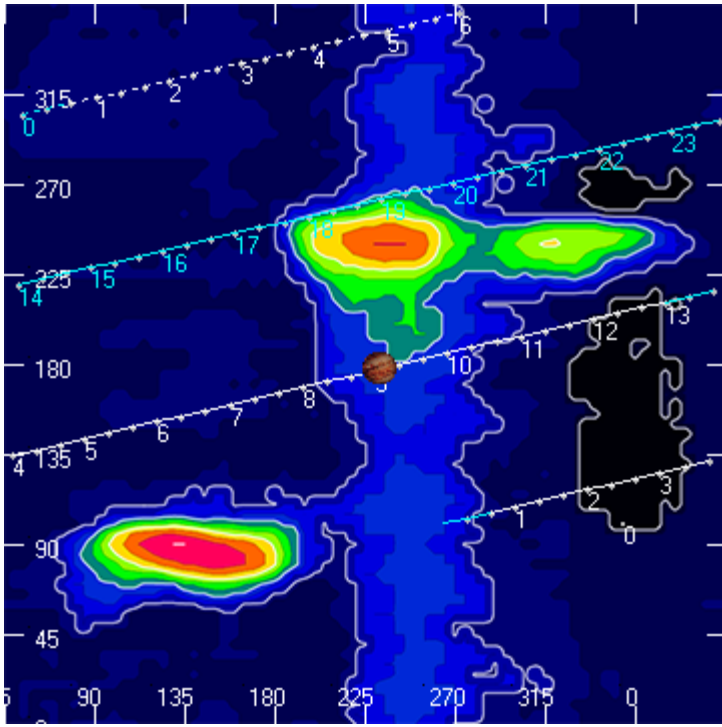
Jupiter was leading the Sun by 160°.

--

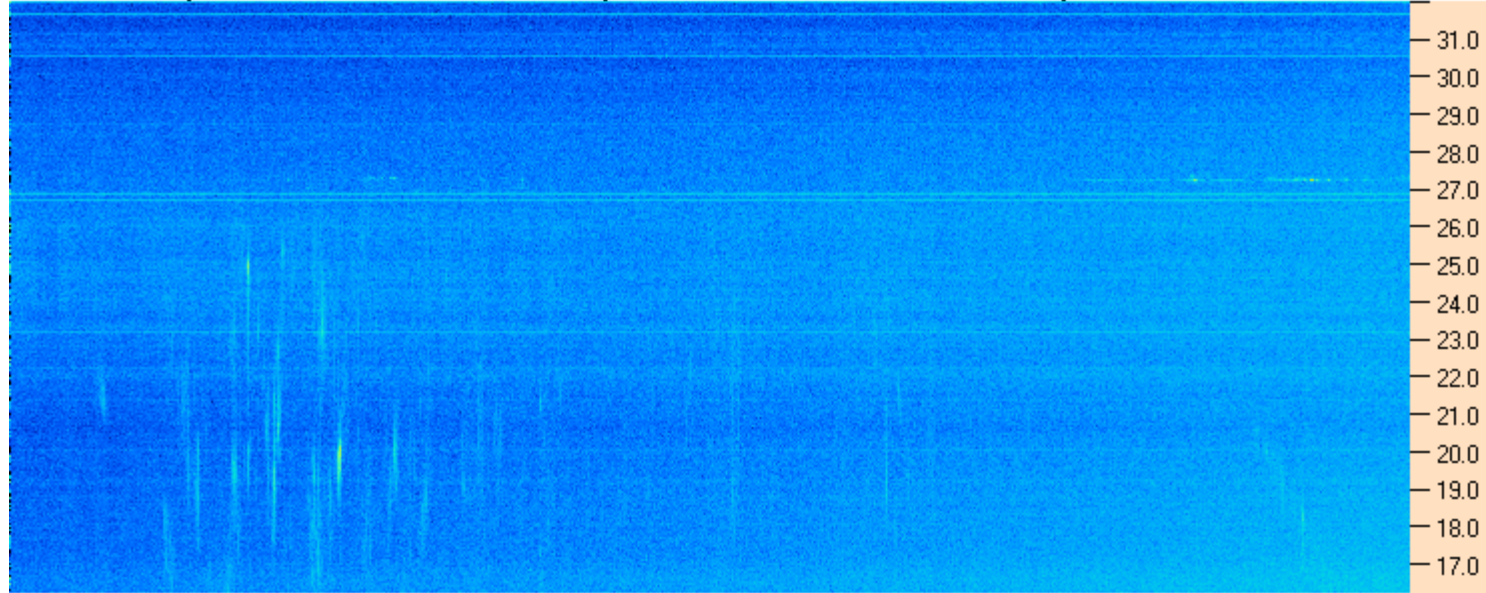
Dave

AJ4CO Observatory 19 Feb 2016, log entry 611





AJ4CO Observatory 19 Jan 2016 - DPS 30 kHz IF on TFD Array in CP Mode - RCP MC +13 dB Correction Array 2014 12 18 B.csv Offset 2060 Gain 5.0



AJ4CO Observatory 19 Jan 2016 - DPS 30 kHz IF on TFD Array in CP Mode - LCP MC +13 dB Correction Array 2014 12 18 B.csv Offset 2060 Gain 5.0

