

Subject: [radiojove-data] 15 Feb 2016 non-Io-A

From: Dave Typinski <davetyp@typnet.net>

Date: 02/18/2016 00:05

To: RadioJove-Data <radiojove-data@lists.nasa.gov>

Here's some very brief non-Io-A from Monday morning.

RCP dominant L bursting 0810-0813 UTC from 16 to 17 MHz, zero drift emission envelope.

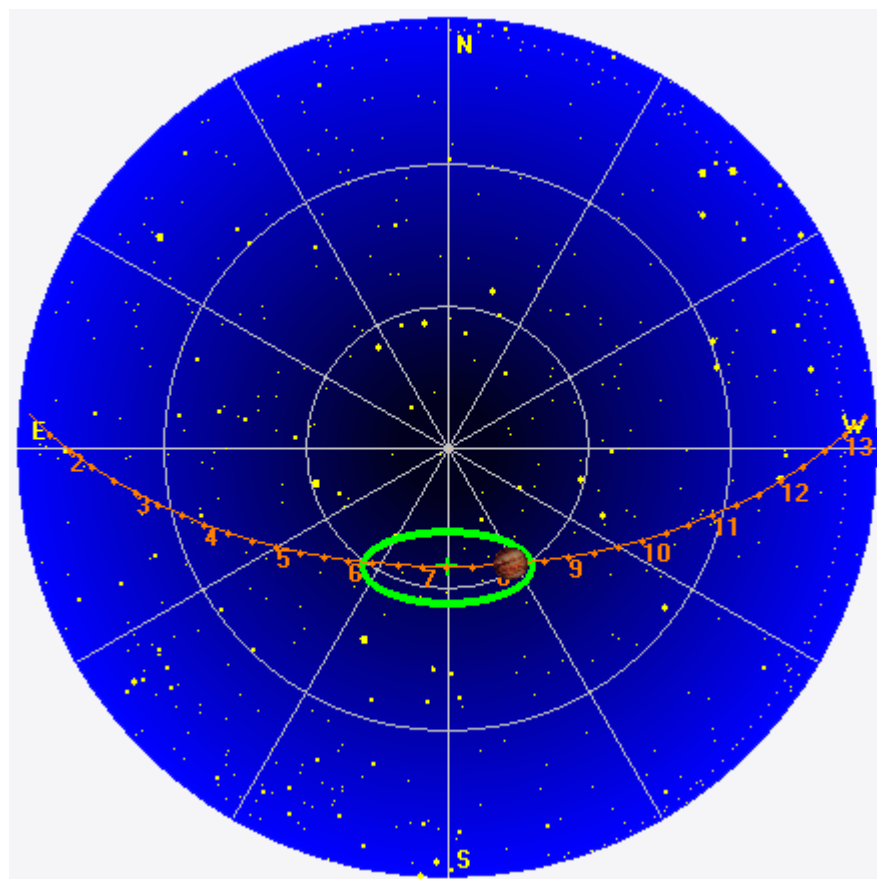
Jupiter was +12° to +13° off axis.

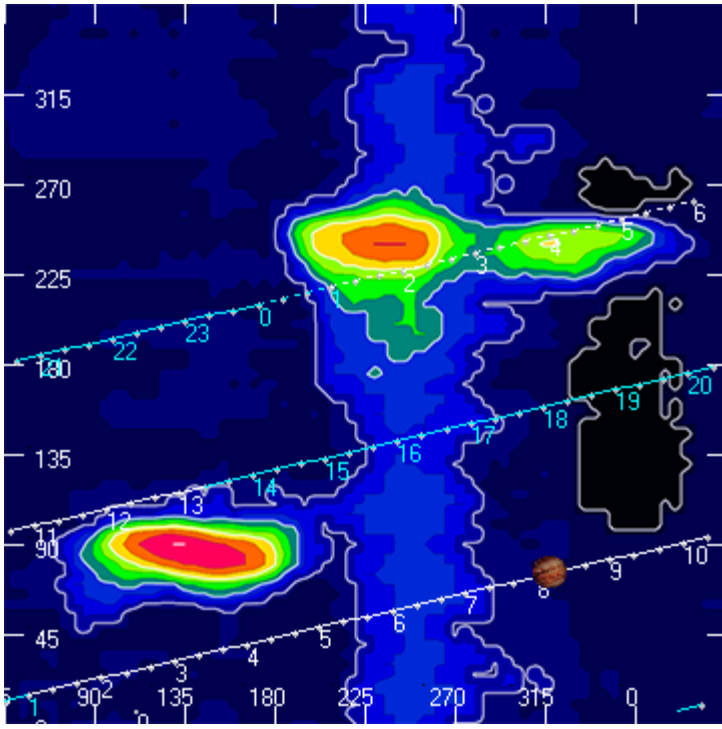
Jupiter was leading the Sun by 155°.

--

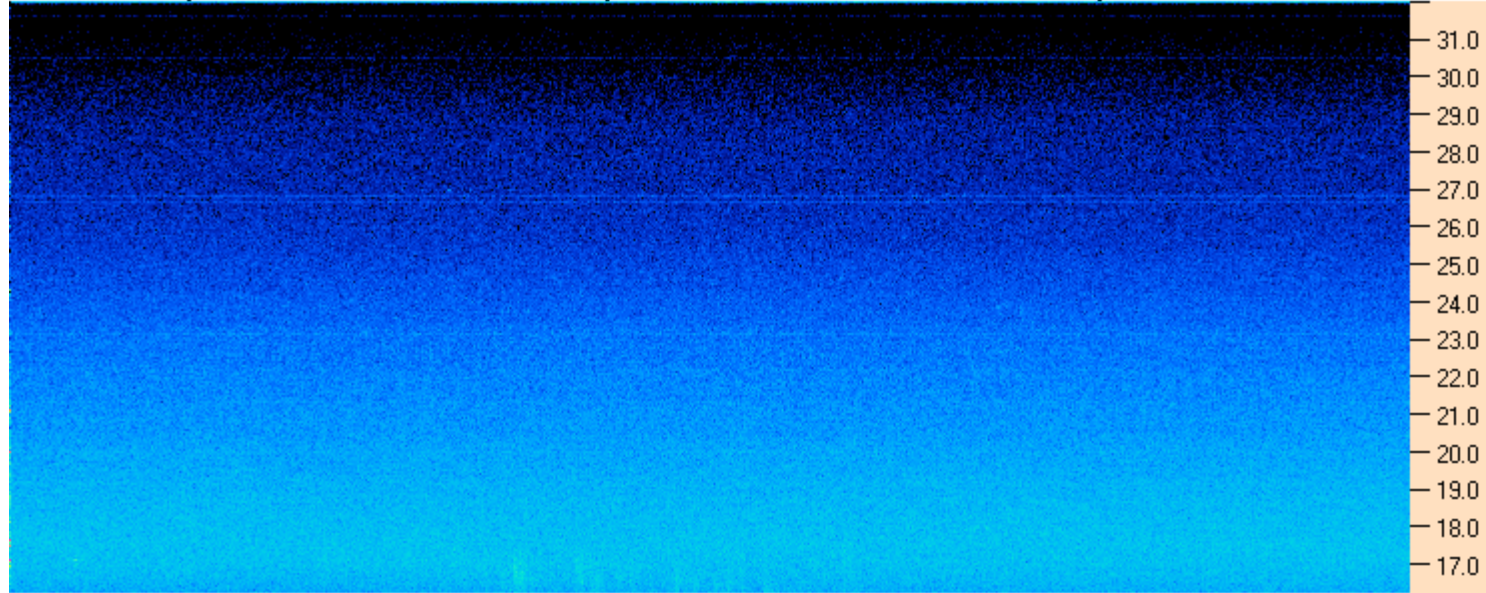
Dave

AJ4CO Observatory 15 Feb 2016, log entry 603





AJ4CO Observatory 15 Feb 2016 - DPS 30 kHz IF on TFD Array in CP Mode - RCP MC +13 dB No Correction Array Offset 1975 Gain 1.95



AJ4CO Observatory 15 Feb 2016 - DPS 30 kHz IF on TFD Array in CP Mode - LCP MC +13 dB No Correction Array Offset 1975 Gain 1.95

