

**Subject:** [radiojove-data] 13 Feb 2016 non-Io-A

**From:** Dave Typinski <davetyp@typnet.net>

**Date:** 02/14/2016 13:03

**To:** RadioJove-Data <radiojove-data@lists.nasa.gov>

Adding to Jim's nice report, here's some non-Io-A from Saturday morning.

RCP dominant L bursting 0612-0642 UTC from 16 to 20 MHz, negative drift emission envelope.

Jupiter was  $-19^\circ$  to  $-12^\circ$  off axis.

Jupiter was leading the Sun by  $153^\circ$ .

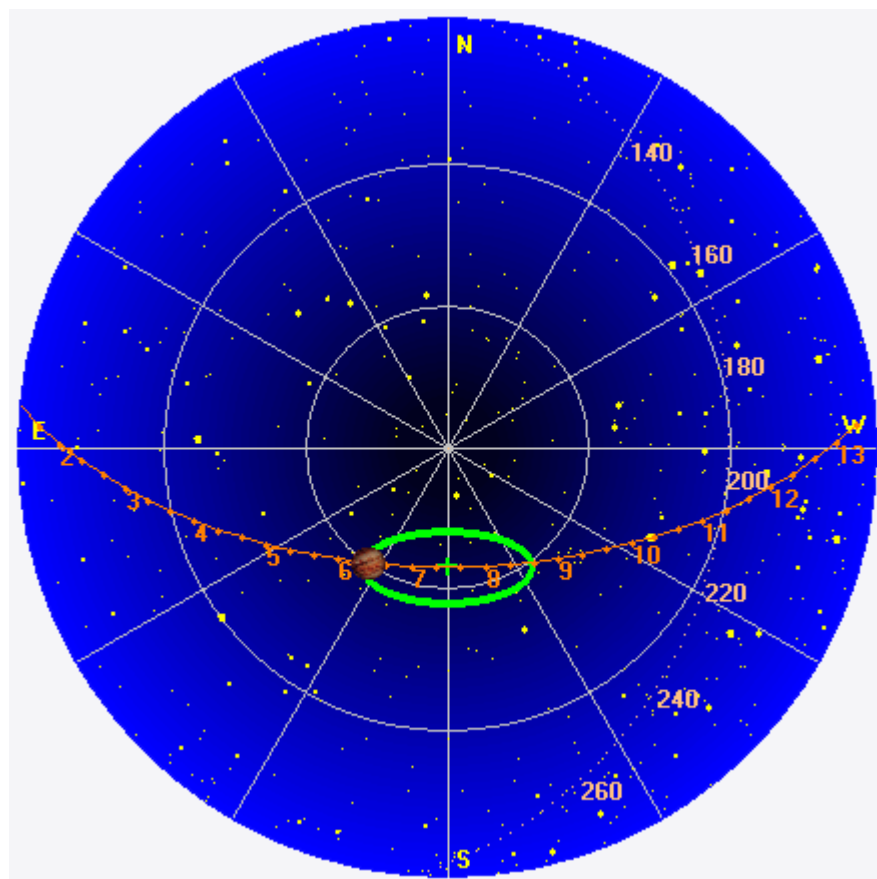
--

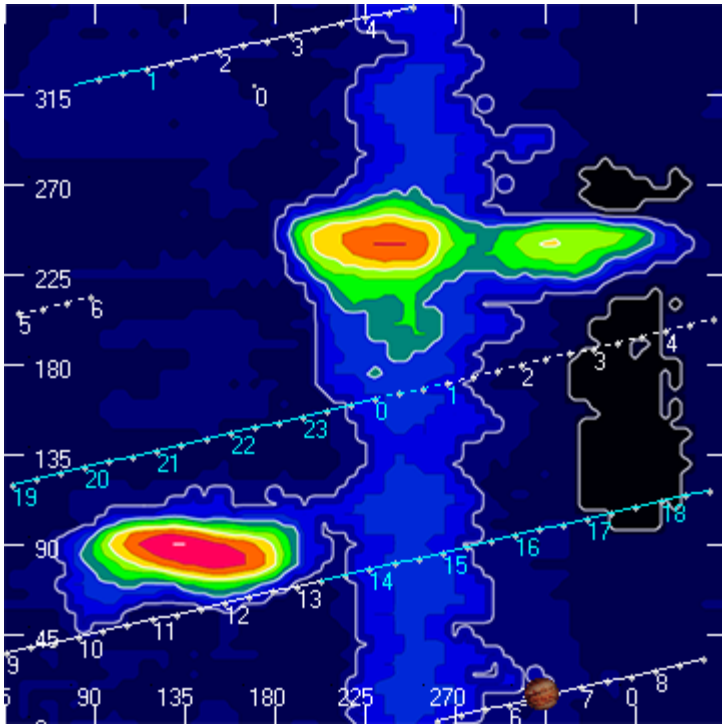
Dave

---

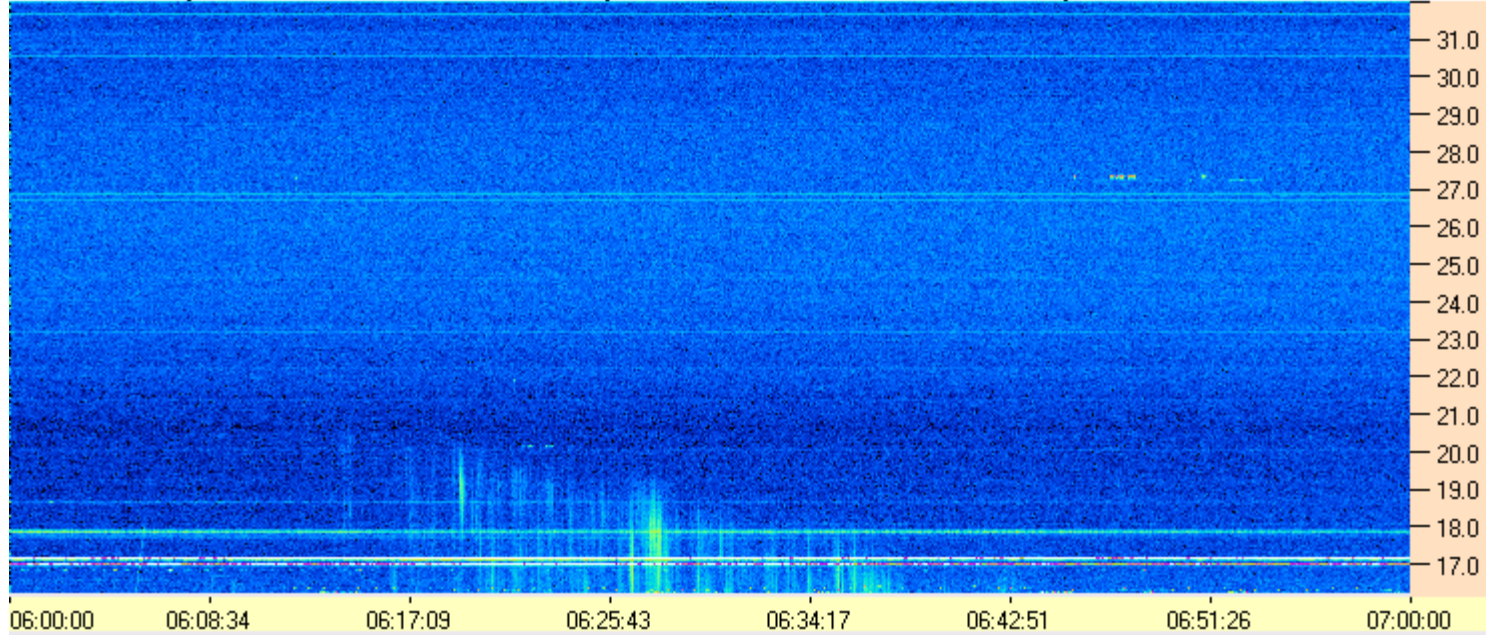
**AJ4CO Observatory 13 Feb 2016, log entry 599**

---





AJ4CO Observatory 13 Feb 2016 - DPS 30 kHz IF on TFD Array in CP Mode - RCP MC +13 dB Correction Array 2014 12 18 B.csv Offset 2050 Gain 5.0



AJ4CO Observatory 13 Feb 2016 - DPS 30 kHz IF on TFD Array in CP Mode - LCP MC +13 dB Correction Array 2014 12 18 B.csv Offset 2050 Gain 5.0

