

Subject: [radiojove-data] 11 Feb 2016 non-Io-A/C

From: Dave Typinski <davetyp@typnet.net>

Date: 02/14/2016 13:02

To: RadioJove-Data <radiojove-data@lists.nasa.gov>

Here's some non-Io-A/C from Thursday morning.

RCP dominant L bursting 0418-0500 UTC from 16 to 19 MHz, negative drift emission envelope (non-Io-A).

LCP dominant L bursting 0610-0721 UTC from 16 to 19 MHz, negative drift emission envelope (non-Io-C).

Moderate line noise present throughout the night, so the spectrograms are made using the polarization difference method.

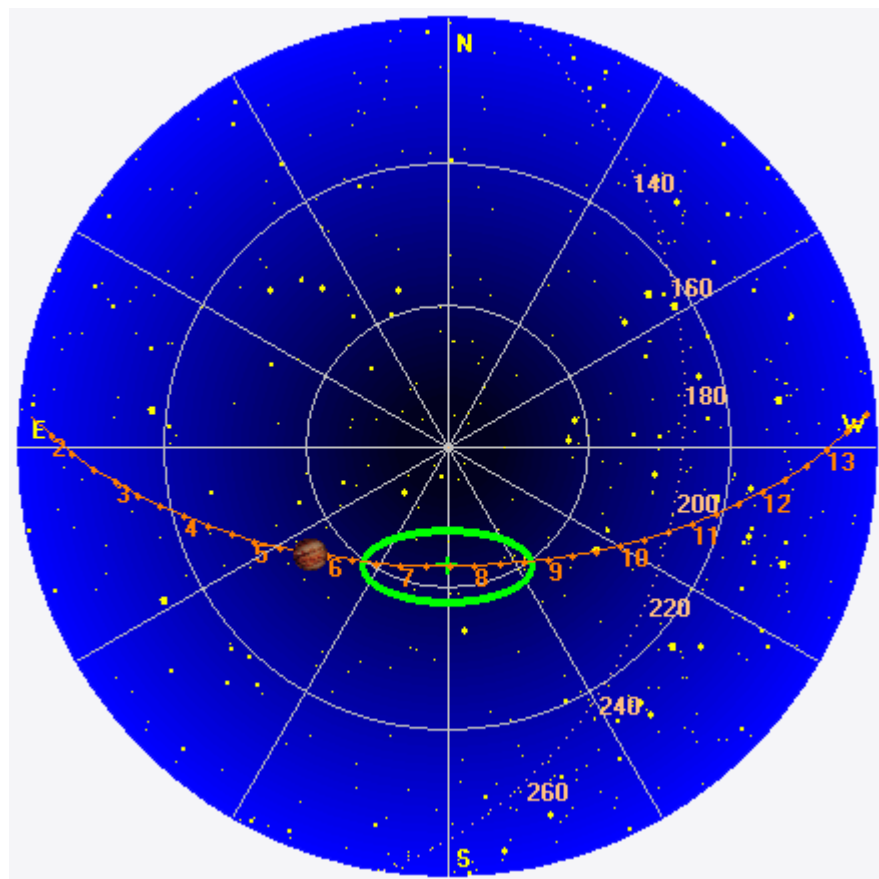
Jupiter was -50° to -4° off axis.

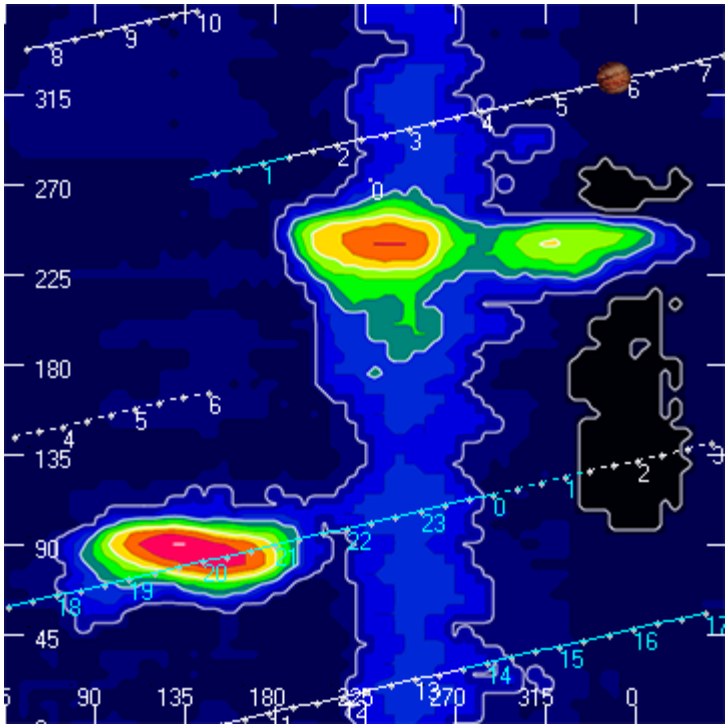
Jupiter was leading the Sun by 150 to 151° .

--

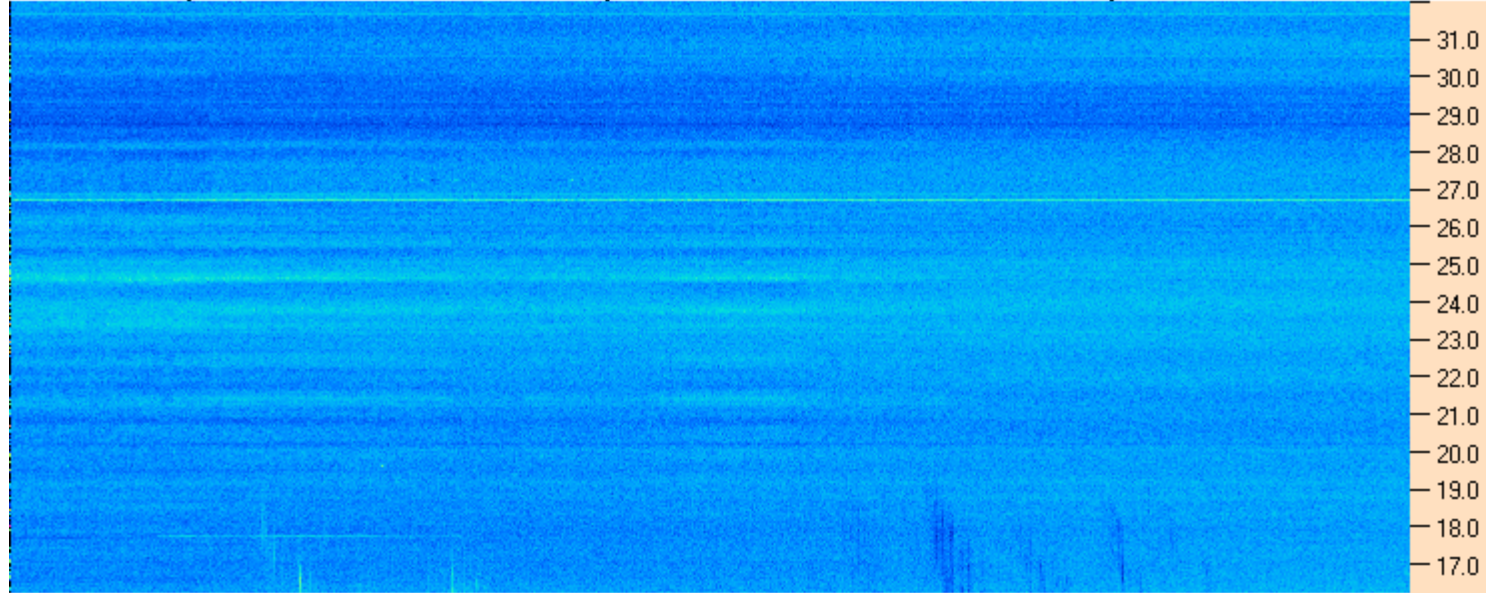
Dave

AJ4CO Observatory 11 Feb 2016, log entry 596 - 597





AJ4CO Observatory 11 Feb 2016 - DPS 30 kHz IF on TFD Array in CP Mode - RCP-LCP MC +13 dB Correction Array 2014 12 18 B.csv Offset 0 Gain 2.0



AJ4CO Observatory 11 Feb 2016 - DPS 30 kHz IF on TFD Array in CP Mode - LCP-RCP MC +13 dB Correction Array 2014 12 18 B.csv Offset 0 Gain 2.0

