

**Subject:** [radiojove-data] 09 Feb 2016 non-Io-B

**From:** Dave Typinski <davetyp@typnet.net>

**Date:** 02/11/2016 00:56

**To:** RadioJove-Data <radiojove-data@lists.nasa.gov>

Here's some non-Io-B from Tuesday morning. Note: did not observe any emission for Tom's report of non-Io-A; probably too far off axis and/or lost beneath the line noise.

RCP dominant L bursting 0717-0846 UTC from 16 to 24 MHz, positive drift emission envelope.

Moderate line noise present throughout the night. The spectrograms are the differences between RCP and LCP. This seems to make the Jovian DAM show up a little better against the non-polarized line noise. The line noise, however, made the 20 MHz strip charts nearly useless.

Jupiter was  $-7^\circ$  to  $+15^\circ$  off axis.

Jupiter was leading the Sun by  $148^\circ$ .

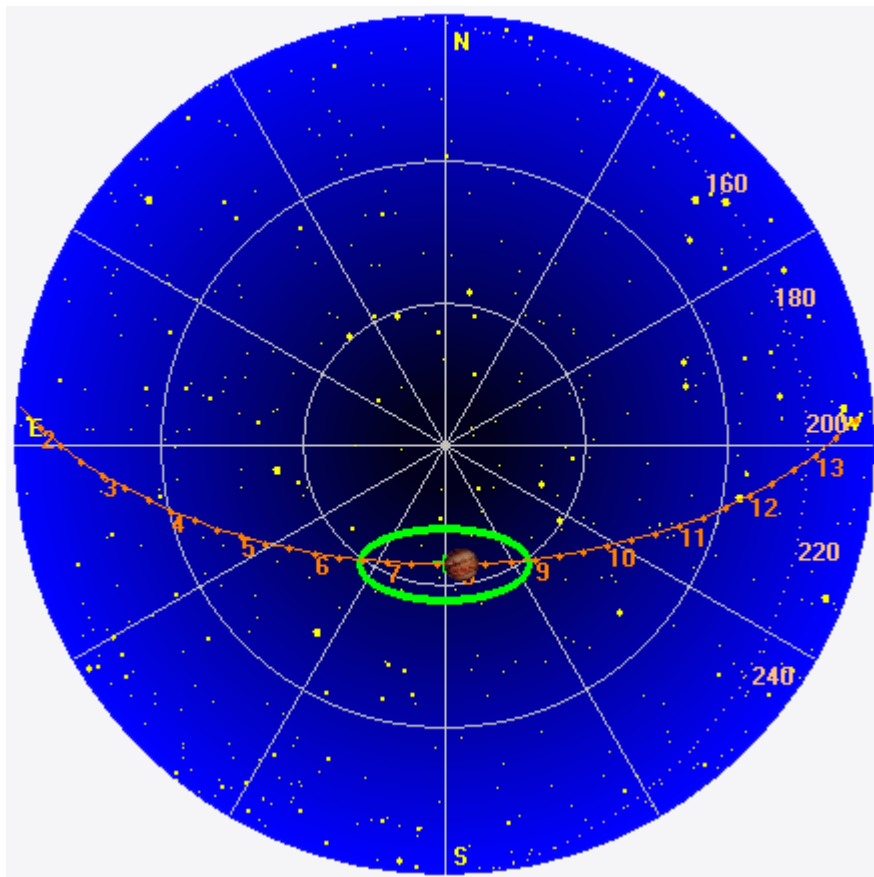
--

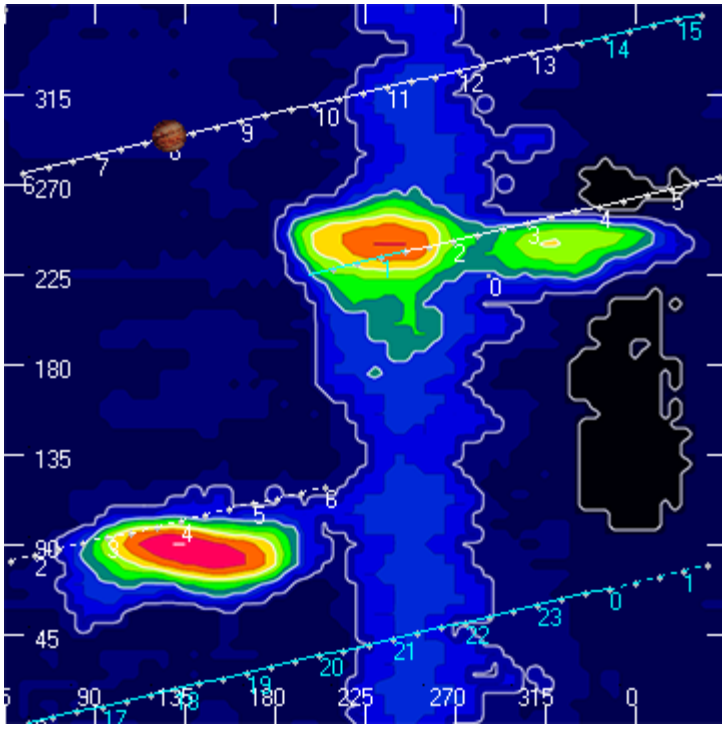
Dave

---

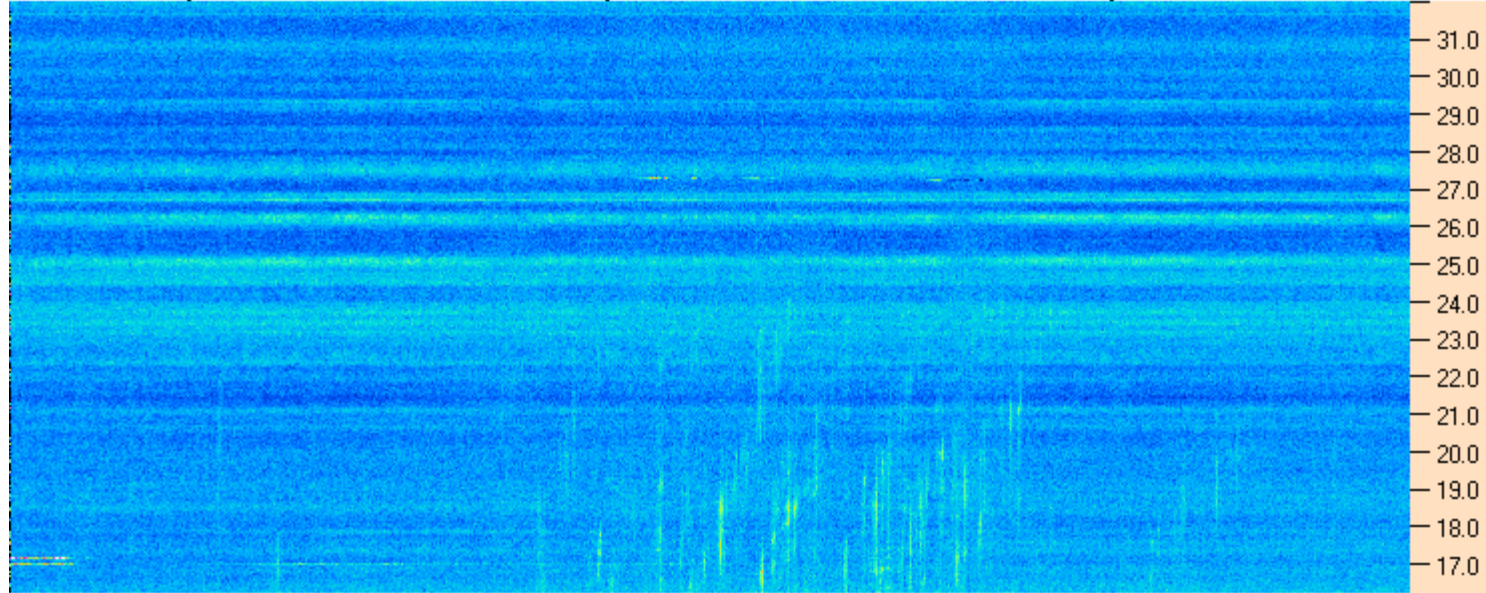
### AJ4CO Observatory 09 Feb 2016, log entry 592

---





AJ4CO Observatory 09 Feb 2016 - DPS 30 kHz IF on TFD Array in CP Mode - RCP-LCP MC +13 dB Correction Array 2014 12 18 B.csv Offset 0 Gain 2.0



07:00:00 07:17:09 07:34:17 07:51:26 08:08:34 08:25:43 08:42:51 09:00:00

AJ4CO Observatory 09 Feb 2016 - DPS 30 kHz IF on TFD Array in CP Mode - LCP-RCP MC +13 dB Correction Array 2014 12 18 B.csv Offset 0 Gain 2.0

