

Subject: [radiojove-data] 07 Feb 2016 non-Io-B, Io-A, Vir A

From: Dave Typinski <davetyp@typnet.net>

Date: 02/08/2016 00:12

To: RadioJove-Data <radiojove-data@lists.nasa.gov>

Adding to Wes's heads-up and Tom's nice report, here's some non-Io-B, Io-A, and Vir A from Sunday morning.

RCP dominant L bursting 0642-0718 UTC from 16 to 21 MHz, positive drift emission envelope (non-Io-B)

RCP dominant L bursting 0821-0938 UTC from 16 to 30 MHz, negative drift emission envelope (vertex late arc, Io-A).

Vir A scintillation starting at 0730 between the two Jovian DAM emission events and extending throughout the Io-A storm.

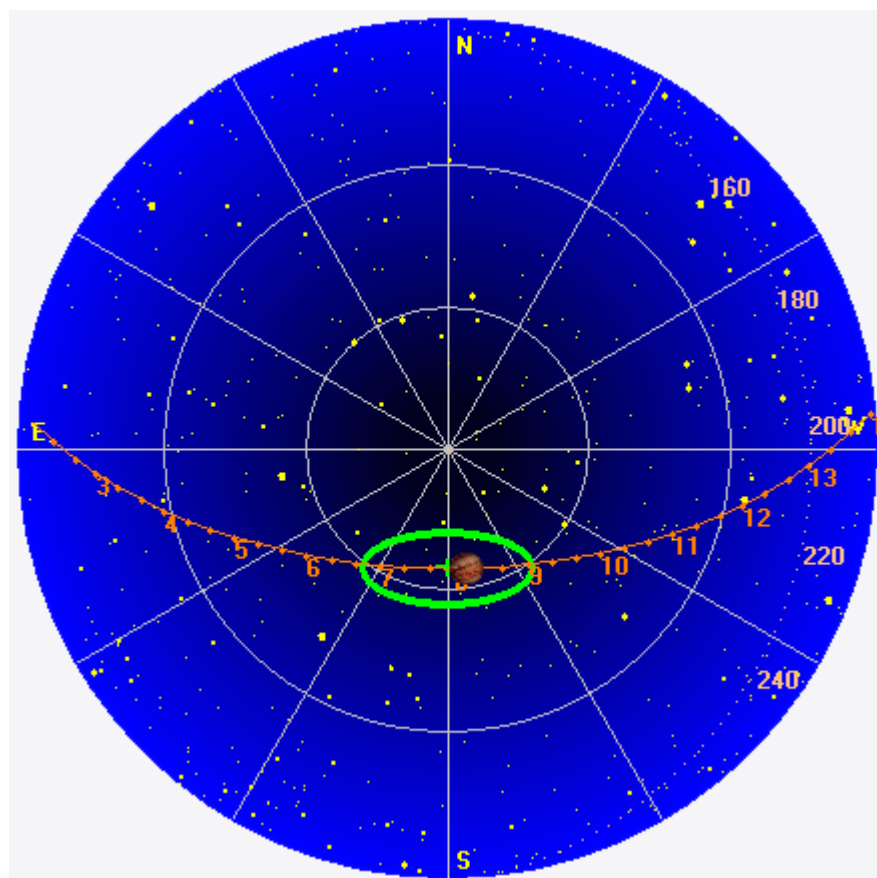
Jupiter was -18° to $+26^\circ$ off axis.

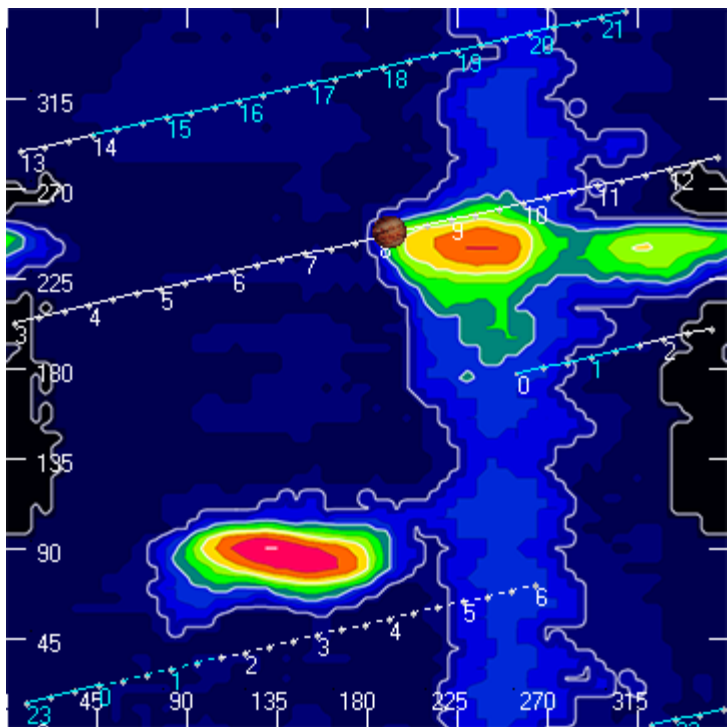
Jupiter was leading the Sun by 146° .

--

Dave

AJ4CO Observatory 07 Feb 2016, log entry 585 - 586





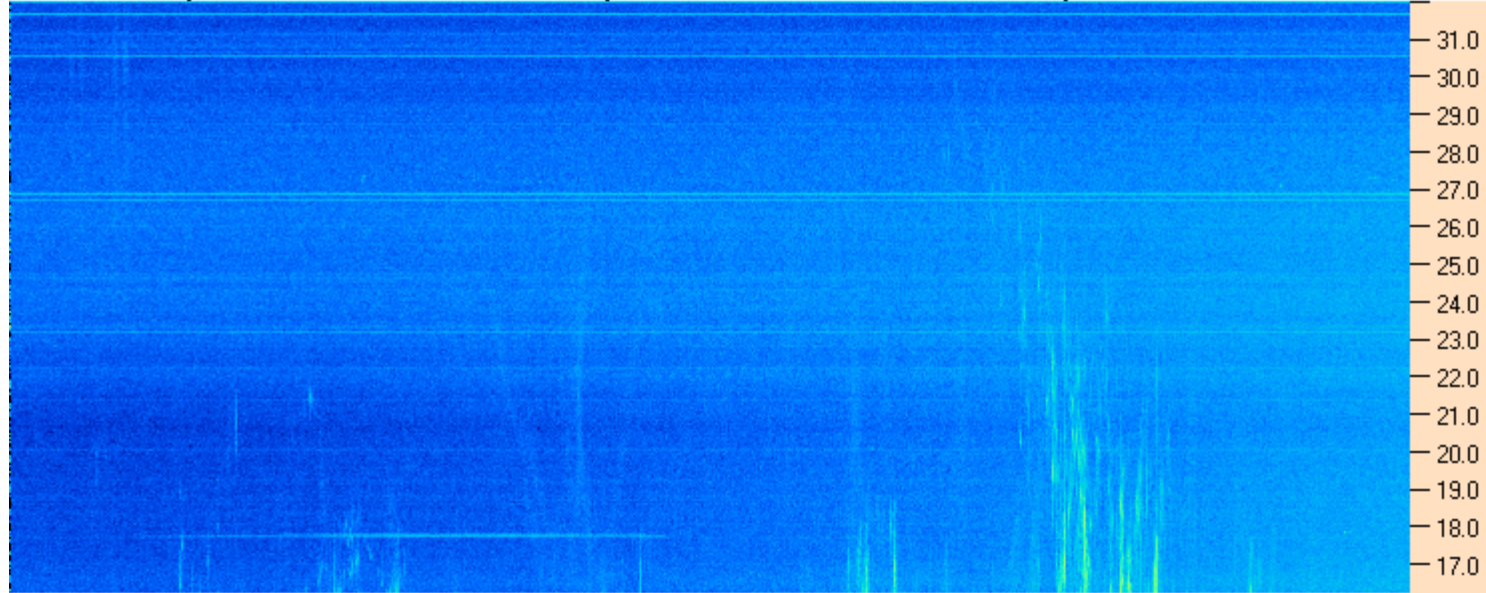
Radio-Eyes 1.4.15

File View Observer Options Tools Telescope Window Help

02/07/2016 08:10:00 Fixed Time UT High Springs, FL Lat: 29:50:13.0 Lng: 82:...

Reference - Pointer					Gal Lat		Gal Lng		Sources: srcii.dat
RA	Declination	Elevation	Azimuth	LMST			Command1		
14.05	88.14	31.37	1.22	11:47:05	29.16	122.32	35MHz_Green.gif	297 Radio Objects.	

AJ4CO Observatory 07 Feb 2016 - DPS 30 kHz IF on TFD Array in CP Mode - RCP MC +13 dB Correction Array 2014 12 18 B.csv Offset 2050 Gain 5.0



AJ4CO Observatory 07 Feb 2016 - DPS 30 kHz IF on TFD Array in CP Mode - LCP MC +13 dB Correction Array 2014 12 18 B.csv Offset 2050 Gain 5.0

