

Subject: [radiojove-data] 05 Feb 2016 Io-A/C

From: Dave Typinski <davetyp@typnet.net>

Date: 02/07/2016 13:51

To: RadioJove-Data <radiojove-data@lists.nasa.gov>

Adding to Tom's nice report, here's some Io-A/C from Friday morning.

RCP dominant L bursting 0625-0635 UTC from 16 to 18 MHz, positive drift emission envelope.

RCP dominant L bursting 0645-1037 UTC from 16 to 28 MHz, negative drift emission envelope.

LCP dominant L bursting 0659-1009 UTC from 16 to 19 MHz, positive drift emission envelope.

Very low in Io phase, so perhaps some of this was non-Io emission, especially the upward-drifting LCP and RCP emission, which we would not expect from Io-A and Io-C.

A bit of weak intermittent line noise in the background rendering the polarization strip chart useless.

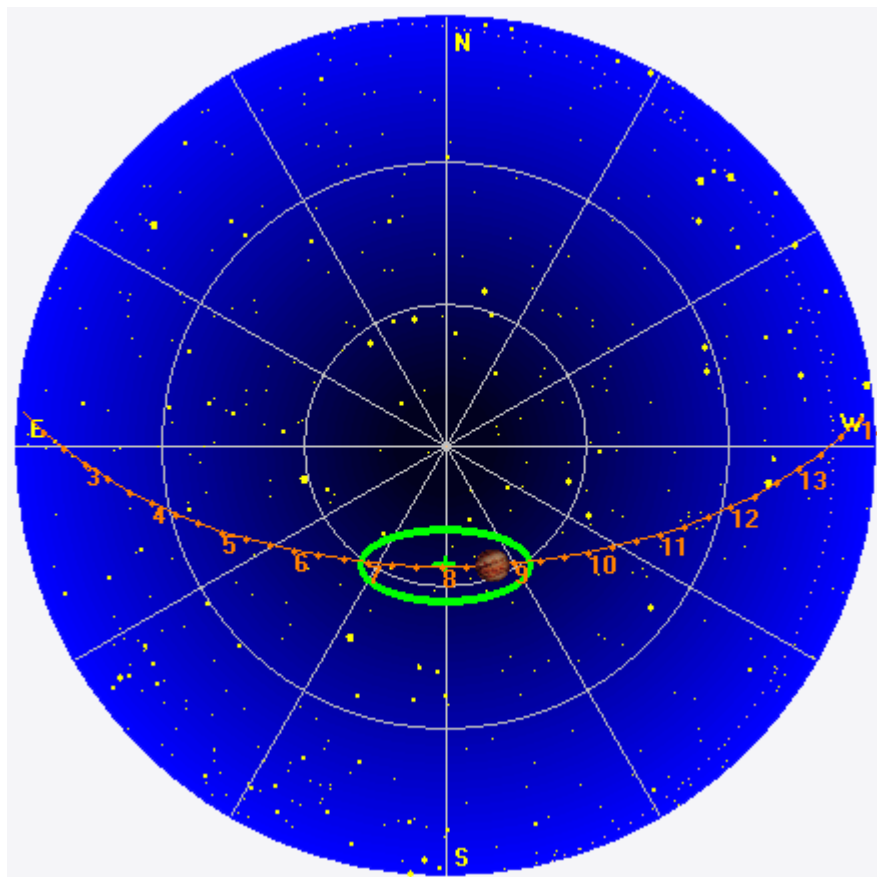
Jupiter was -20° to $+38^\circ$ off axis.

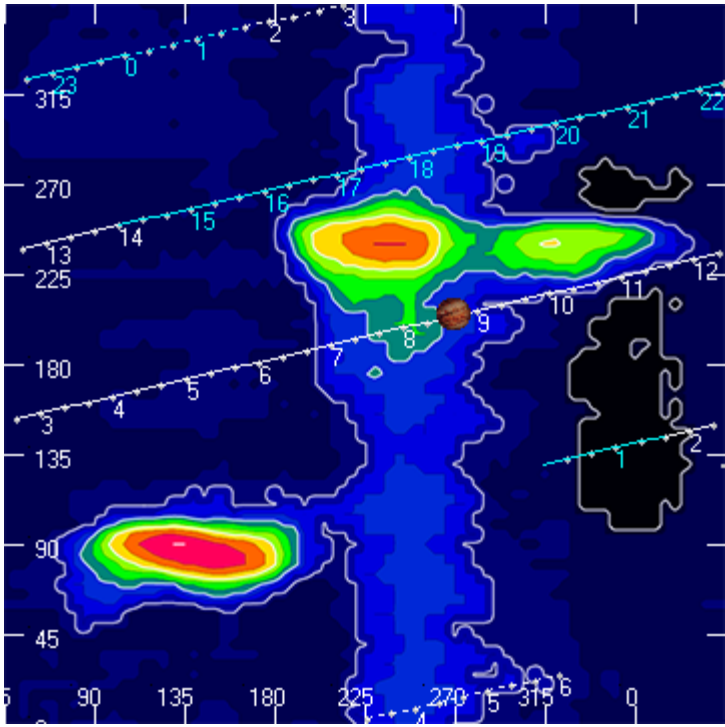
Jupiter was leading the Sun by 144° .

--

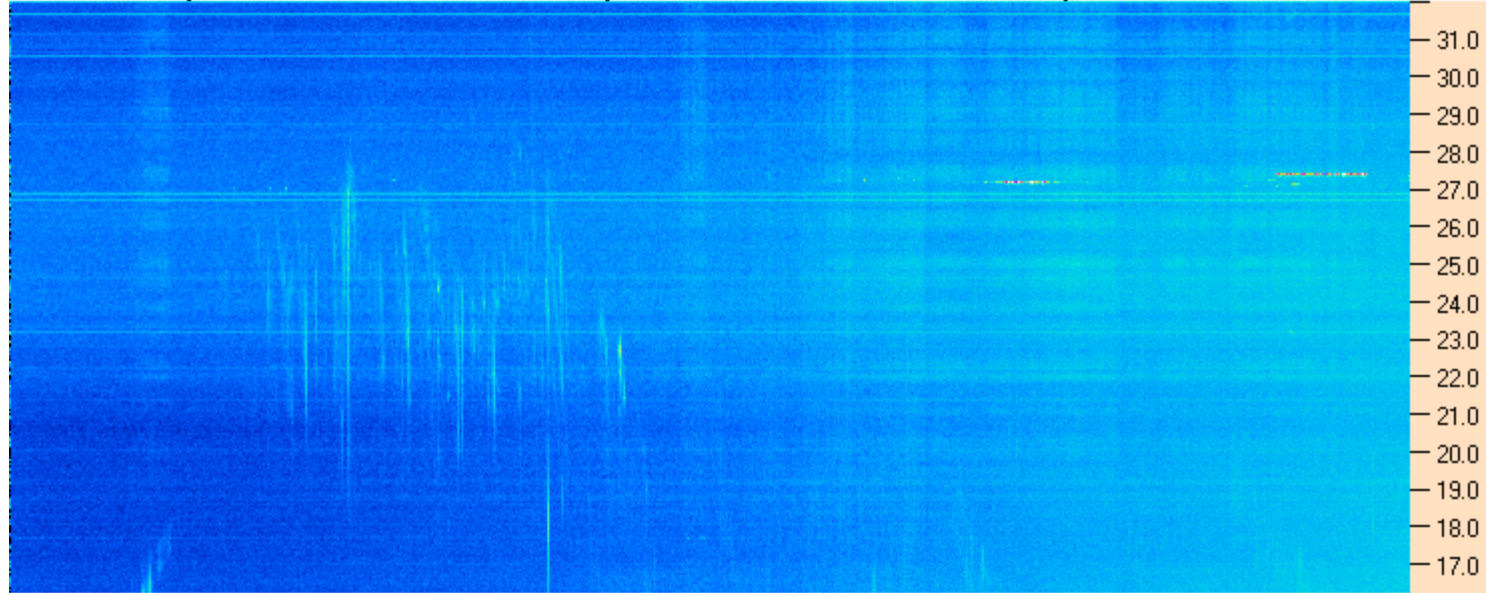
Dave

AJ4CO Observatory 05 Feb 2016, log entry 580 - 582





AJ4CO Observatory 05 Feb 2016 - DPS 30 kHz IF on TFD Array in CP Mode - RCP MC +13 dB Correction Array 2014 12 18 B.csv Offset 2050 Gain 5.0



06:00:00 06:42:51 07:25:43 08:08:34 08:51:26 09:34:17 10:17:09 11:00:00

AJ4CO Observatory 05 Feb 2016 - DPS 30 kHz IF on TFD Array in CP Mode - LCP MC +13 dB Correction Array 2014 12 18 B.csv Offset 2050 Gain 5.0

