

Subject: [radiojove-data] 03 Feb 2016 non-Io-A

From: Dave Typinski <davetyp@typnet.net>

Date: 02/04/2016 21:55

To: RadioJove-Data <radiojove-data@lists.nasa.gov>

Adding to Wes's nice heads-up and Tom's nice report, here's some non-Io-A from Wednesday morning.

RCP dominant L bursting 0545-0617 UTC from 16 to 23 MHz, negative drift emission envelope, no modulation lanes visible -- some deep, coarse ionospheric diffraction / refraction lanes.

Odd CB band interference with spurious emission at 19.6, 21.8, 24.9 and 29.6 MHz. Someone overdriving the transmitter?

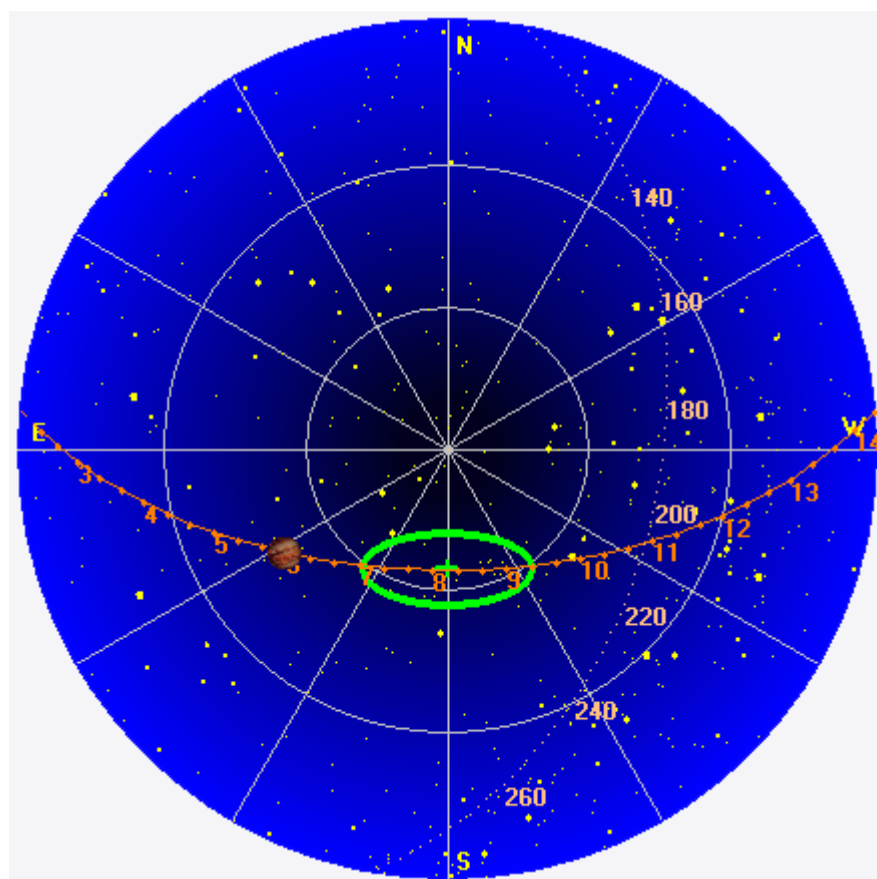
Jupiter was -37° to -29° off axis.

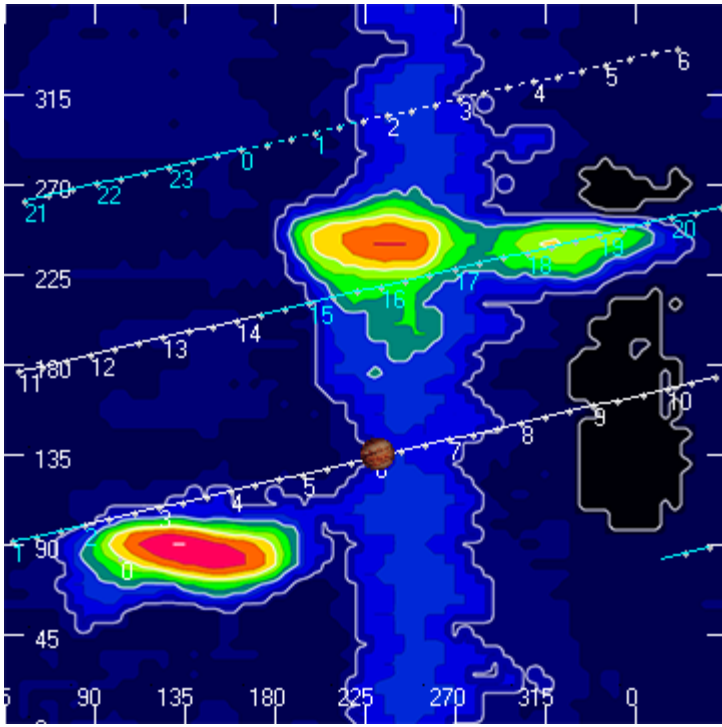
Jupiter was leading the Sun by 142° .

--

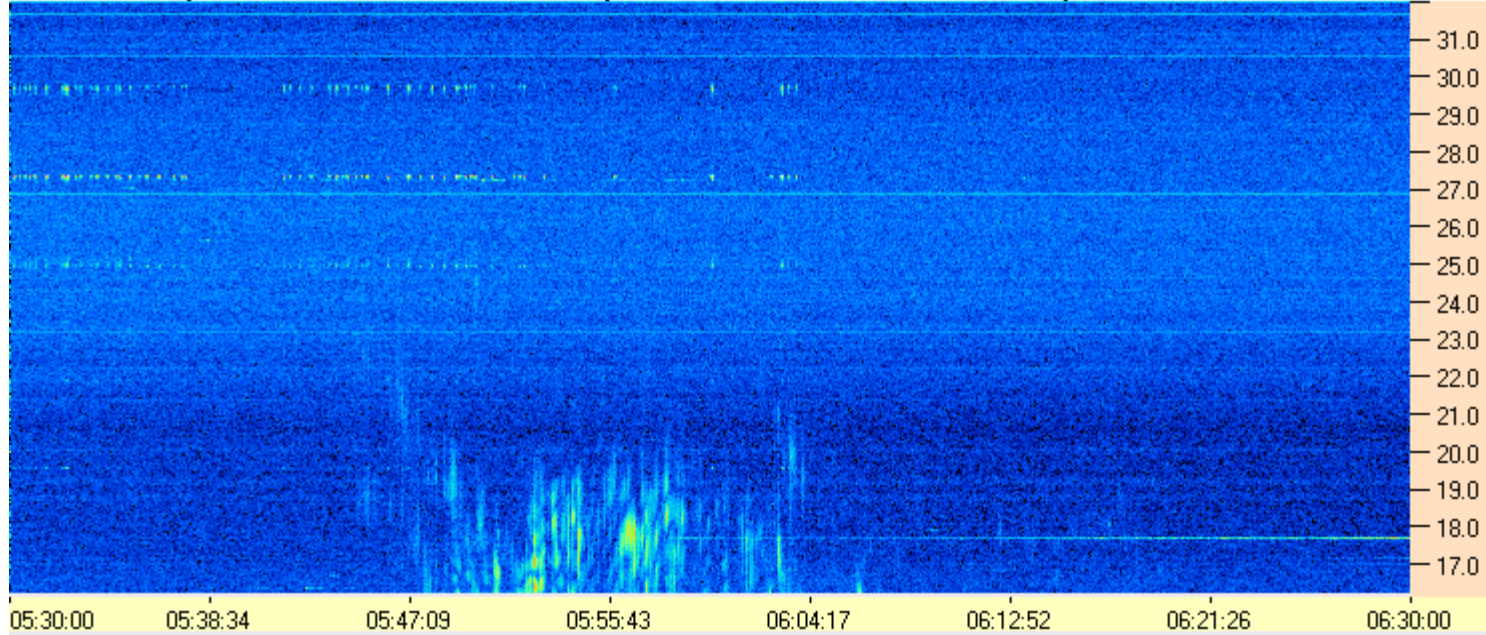
Dave

AJ4CO Observatory 03 Feb 2016, log entry 579





AJ4CO Observatory 03 Feb 2016 - DPS 30 kHz IF on TFD Array in CP Mode - RCP MC +13 dB Correction Array 2014 12 18 B.csv Offset 2050 Gain 5.0



AJ4CO Observatory 03 Feb 2016 - DPS 30 kHz IF on TFD Array in CP Mode - LCP MC +13 dB Correction Array 2014 12 18 B.csv Offset 2050 Gain 5.0

