

Subject: [radiojove-data] 31 Jan 2016 non-lo-A

From: Dave Typinski <davetyp@typnet.net>

Date: 01/31/2016 20:21

To: RadioJove-Data <radiojove-data@lists.nasa.gov>

Here's some very weak non-lo-A from Sunday morning.

Proving once again that the phase plane is statistical, this track is closer to the lo-A zone than the one a week ago on Jan 24 -- yet that one produced some rather strong emission while this emission barely exists.

RCP dominant L bursting 0818-0905 UTC from 16 to 18 MHz, zero drift emission envelope, no modulation lanes visible.

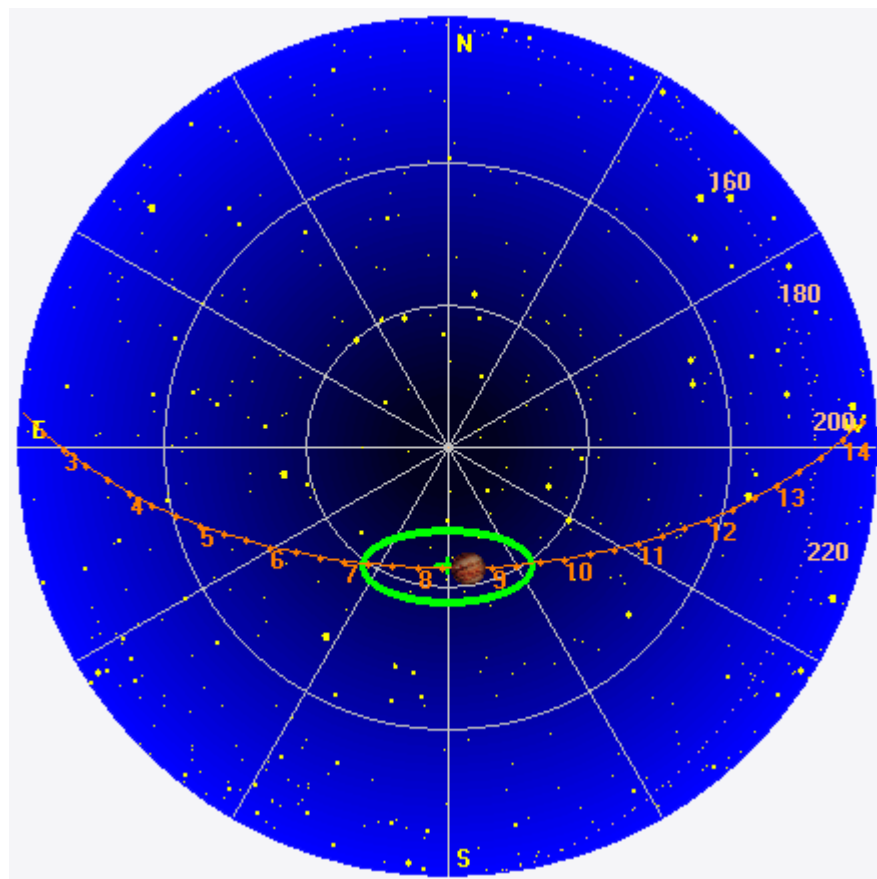
Jupiter was -2° to $+10^\circ$ off axis.

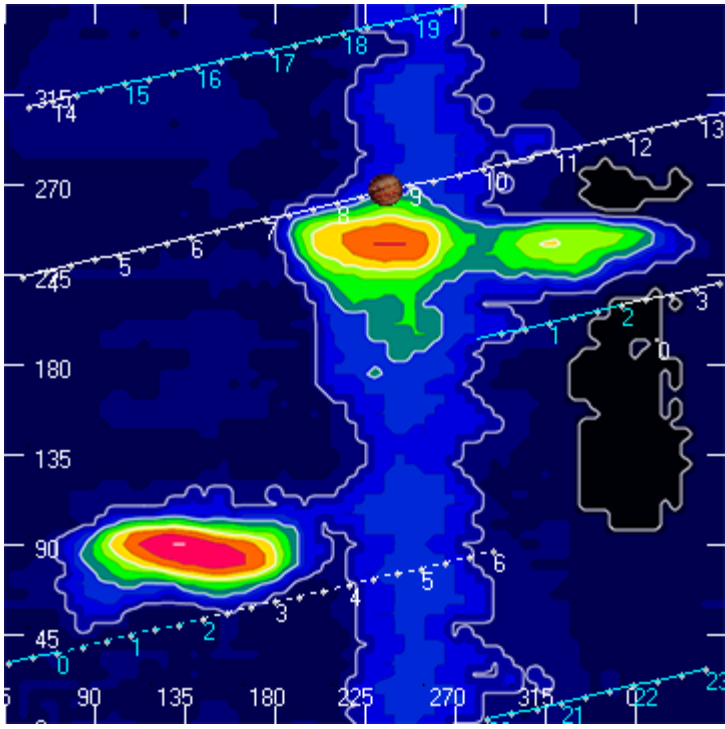
Jupiter was leading the Sun by 139° .

--

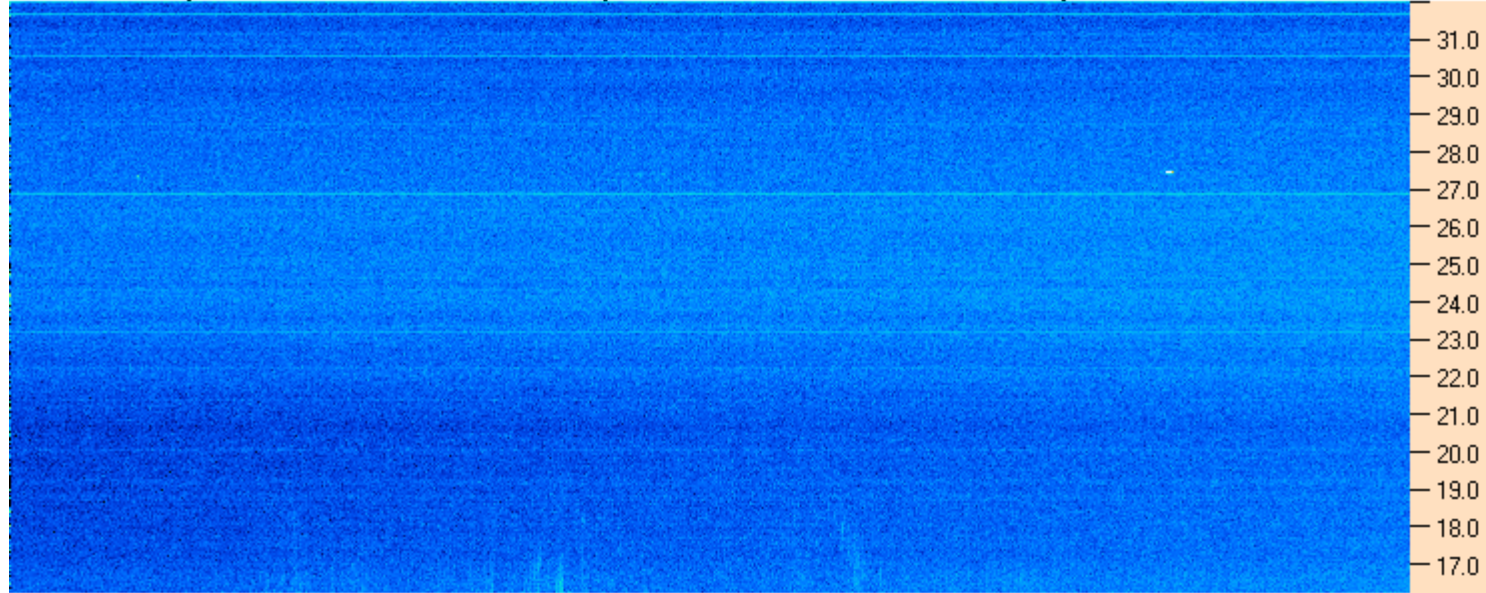
Dave

AJ4CO Observatory 31 Jan 2016, log entry 576





AJ4CO Observatory 31 Jan 2016 - DPS 30 kHz IF on TFD Array in CP Mode - RCP MC +13 dB Correction Array 2014 12 18 B.csv Offset 2050 Gain 5.0



08:00:00 08:12:51 08:25:43 08:38:34 08:51:26 09:04:17 09:17:09 09:30:00

AJ4CO Observatory 31 Jan 2016 - DPS 30 kHz IF on TFD Array in CP Mode - LCP MC +13 dB Correction Array 2014 12 18 B.csv Offset 2050 Gain 5.0

