

Subject: [radiojove-data] 29 Jan 2016 Io-A

From: Dave Typinski <davetyp@typnet.net>

Date: 01/30/2016 17:59

To: RadioJove-Data <radiojove-data@lists.nasa.gov>

Adding to Tom & Jim's nice reports, here's some Io-A from Friday morning.

RCP dominant L bursting 0556-0949 UTC from 16 to 26 MHz, vertex late arcs, no modulation lanes visible.

Kind of a strange storm for an Io-A/C phase plane track.

Emission spanned four hours, but the amplitude was underwhelming at best

Zero LCP, so zero Io-C. Did see the RCP "hole" that sometimes appears in the middle of the Io-C zone (0900 to 0945 UTC). I take this to be a satellite campus of the Io-A emission zone.

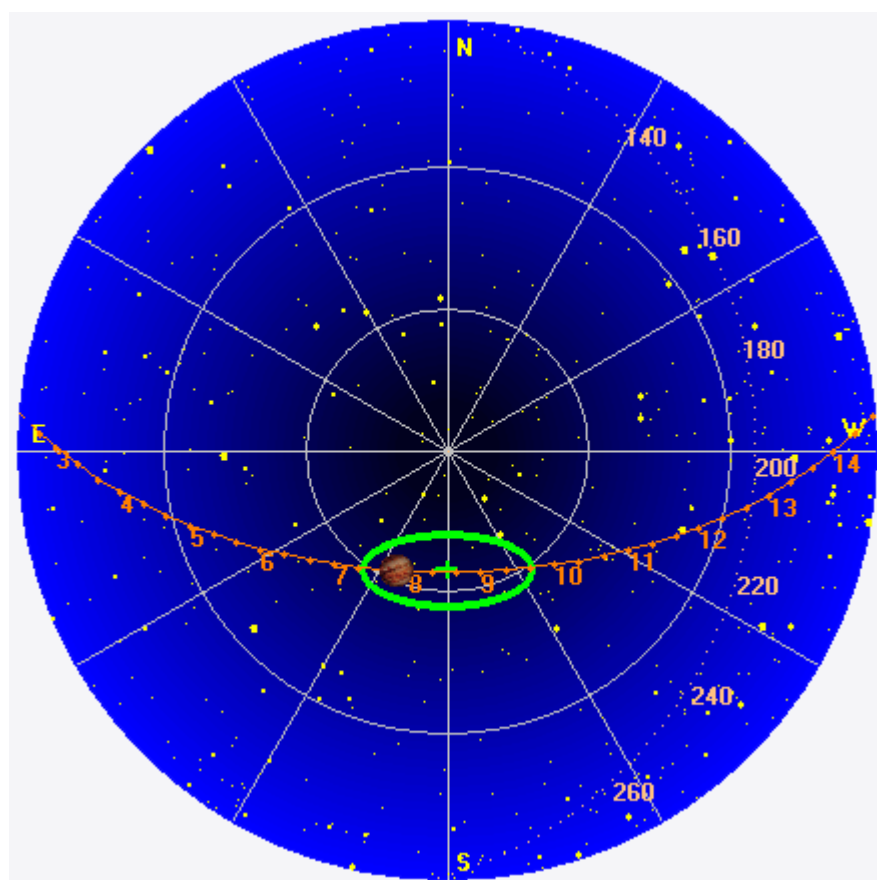
Jupiter was -39° to $+19^\circ$ off axis.

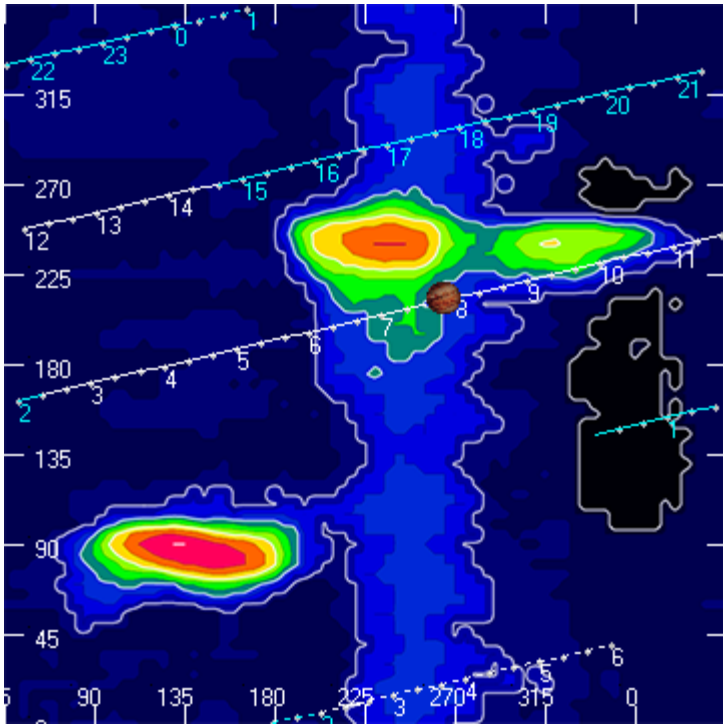
Jupiter was leading the Sun by 136° .

--

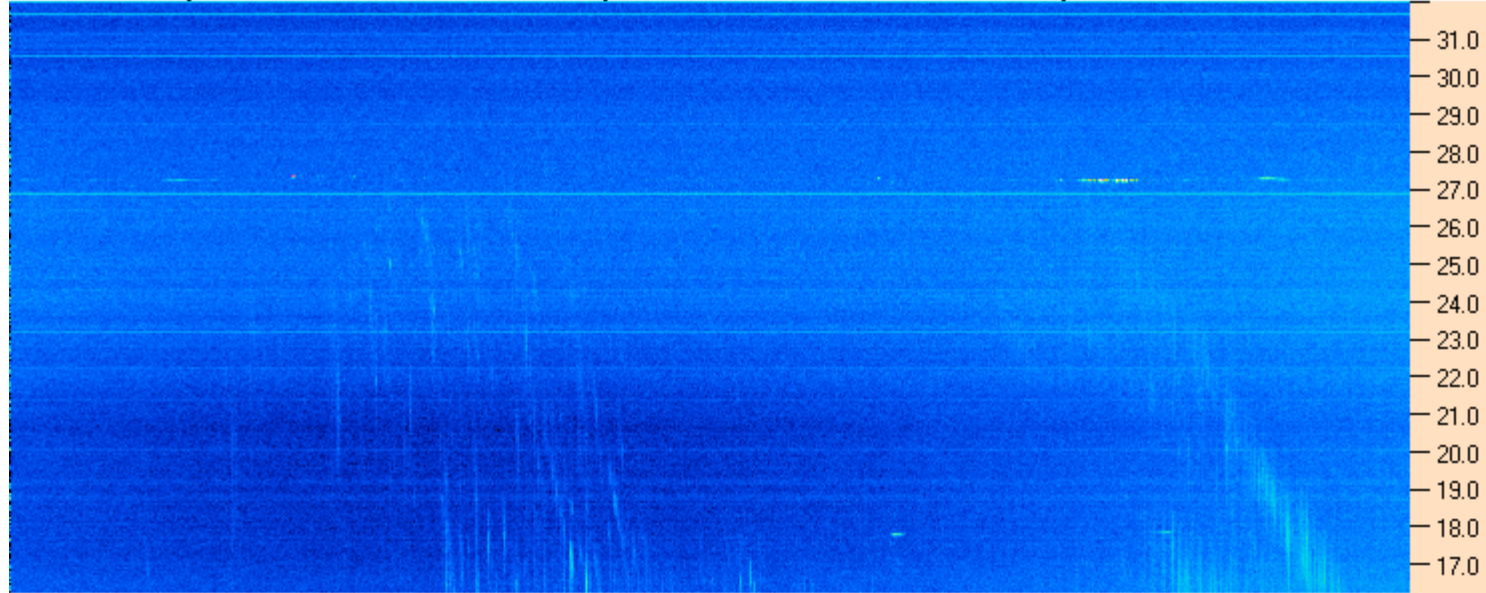
Dave

AJ4CO Observatory 29 Jan 2016, log entry 572





AJ4CO Observatory 29 Jan 2016 - DPS 30 kHz IF on TFD Array in CP Mode - RCP MC +13 dB Correction Array 2014 12 18 B.csv Offset 2050 Gain 5.0



AJ4CO Observatory 29 Jan 2016 - DPS 30 kHz IF on TFD Array in CP Mode - LCP MC +13 dB Correction Array 2014 12 18 B.csv Offset 2050 Gain 5.0

