

Subject: 25 Jan 2016 non-Io-A/C

From: Dave Typinski <davetyp@typnet.net>

Date: 01/28/2016 23:53

To: RadioJove-Data <radiojove-data@lists.nasa.gov>

Adding to Jim's nice report, here's some weak non-Io-A/C from Monday morning.

LCP dominant L bursting 0511-0529 UTC from 18 to 23 MHz, negative drift emission envelope, no modulation lanes visible.

RCP dominant L bursting 0521-0556 UTC from 16 to 20 MHz, negative drift emission envelope, no modulation lanes visible.

Note: the apparent polarization flip might have something to do with the large off-axis angle, or it might be real.

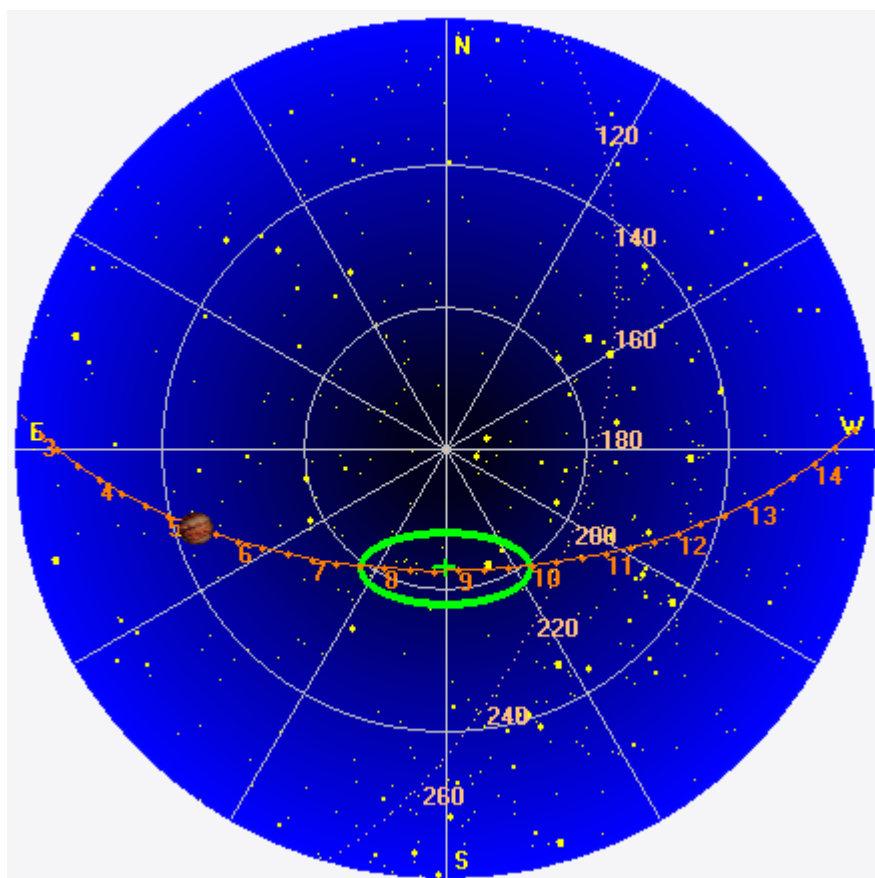
Jupiter was -55° to -43° off axis.

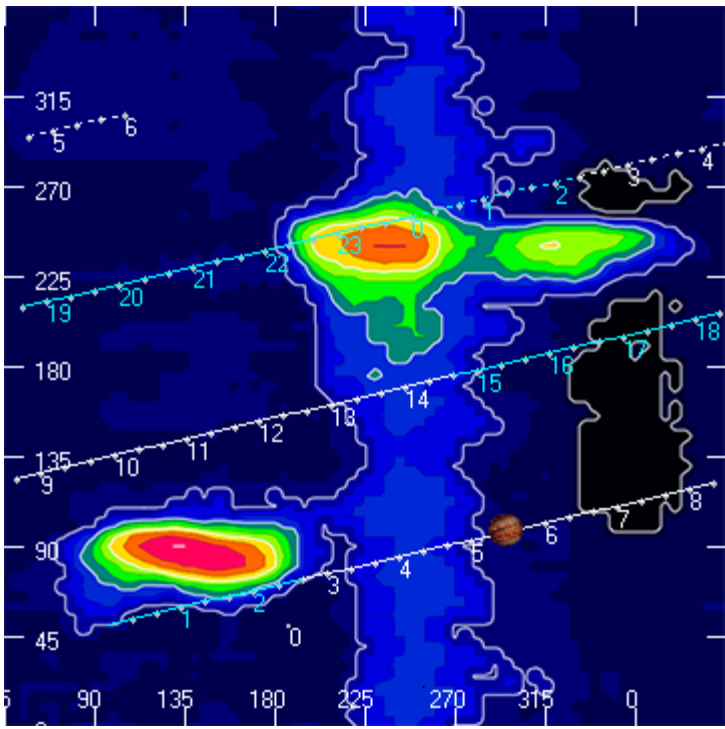
Jupiter was leading the Sun by 132° .

--

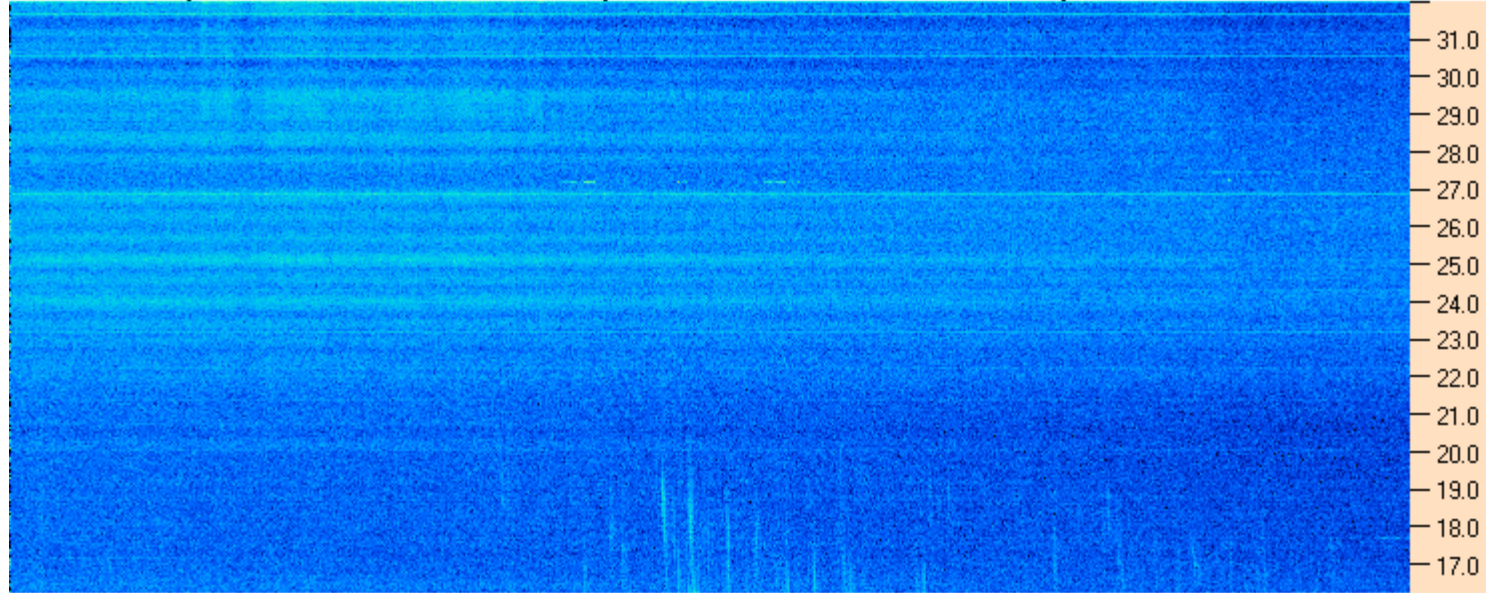
Dave

AJ4CO Observatory 25 Jan 2016, log entry 566 - 567





AJ4CO Observatory 25 Jan 2016 - DPS 30 kHz IF on TFD Array in CP Mode - RCP MC +13 dB Correction Array 2014 12 18 B.csv Offset 2050 Gain 5.0



05:00:00 05:08:34 05:17:09 05:25:43 05:34:17 05:42:51 05:51:26 06:00:00

AJ4CO Observatory 25 Jan 2016 - DPS 30 kHz IF on TFD Array in CP Mode - LCP MC +13 dB Correction Array 2014 12 18 B.csv Offset 2050 Gain 5.0

