

**Subject:** [radiojove-data] 21 Jan 2016 non-Io-A/B

**From:** Dave Typinski <davetyp@typnet.net>

**Date:** 01/22/2016 19:29

**To:** RadioJove-Data <radiojove-data@lists.nasa.gov>

Here's some pretty weak non-Io-A from Thursday morning.

non-Io-B:

RCP dominant L bursting 0738-0844 UTC from 16 to 19 MHz, zero drift emission envelope, no modulation lanes visible.

non-Io-A:

RCP dominant L bursting 1028-1036 UTC from 16 to 20 MHz, negative drift emission envelope, no modulation lanes visible.

Jupiter was  $-22^\circ$  to  $+23^\circ$  off axis.

Jupiter was leading the Sun by  $128^\circ$ .

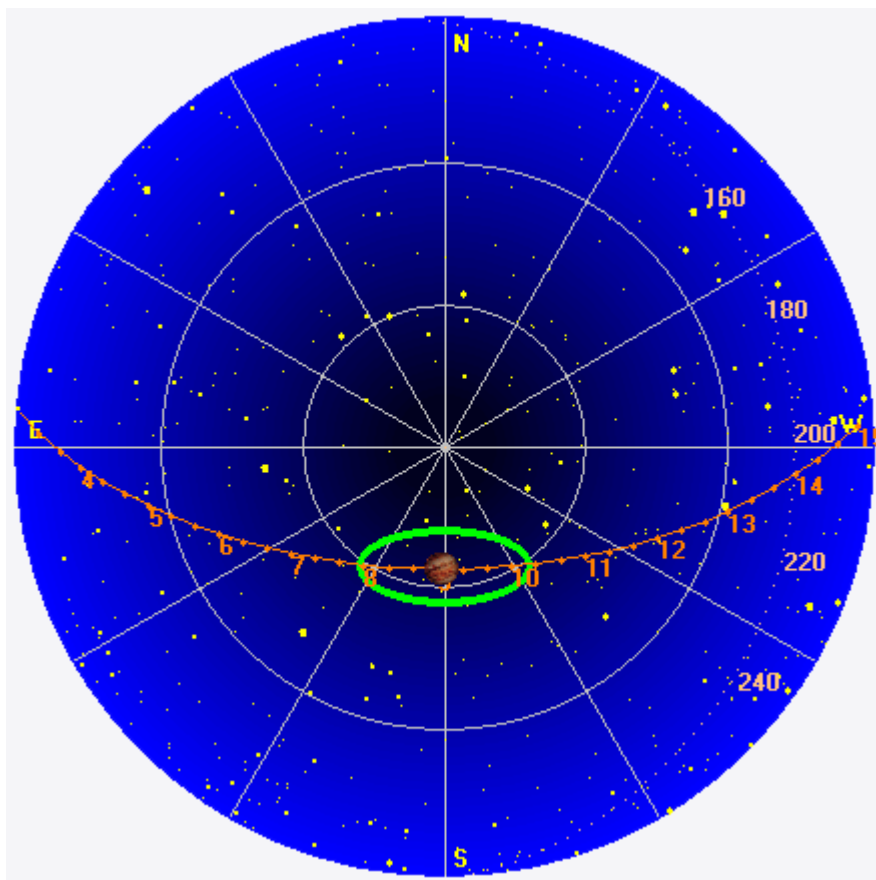
--

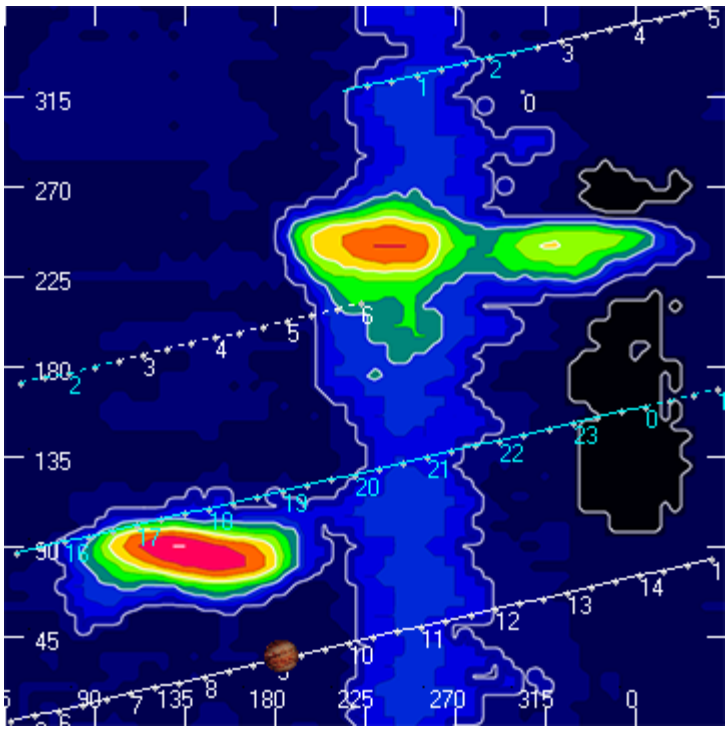
Dave

---

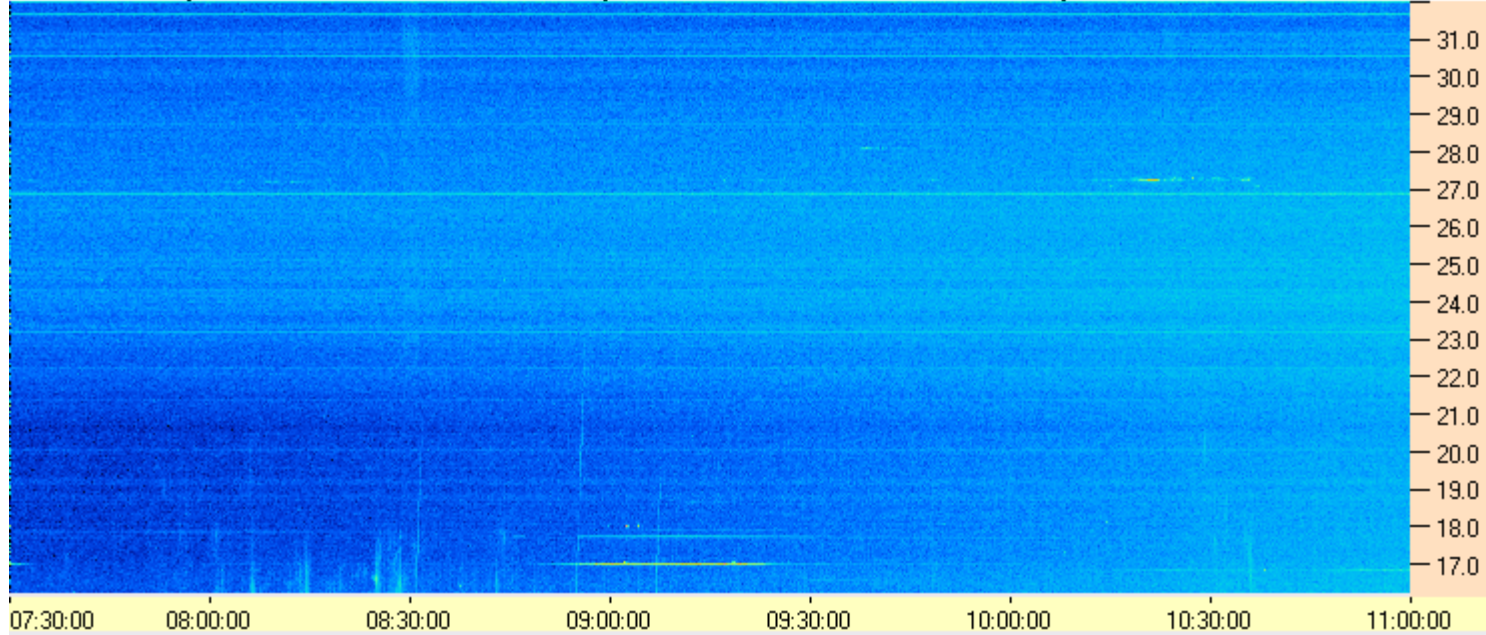
**AJ4CO Observatory 21 Jan 2016, log entry 558 - 559**

---





AJ4CO Observatory 21 Jan 2016 - DPS 30 kHz IF on TFD Array in CP Mode - RCP MC +13 dB Correction Array 2014 12 18 B.csv Offset 2050 Gain 6.0



AJ4CO Observatory 21 Jan 2016 - DPS 30 kHz IF on TFD Array in CP Mode - LCP MC +13 dB Correction Array 2014 12 18 B.csv Offset 2050 Gain 6.0

