

Subject: [radiojove-data] 19 Jan 2016 non-Io-A

From: Dave Typinski <davetyp@typnet.net>

Date: 01/22/2016 19:28

To: RadioJove-Data <radiojove-data@lists.nasa.gov>

Here's some non-Io-A from Tuesday morning.

RCP dominant L bursting 0814-0953 UTC from 16 to 25 MHz, negative drift emission envelope, no modulation lanes visible.

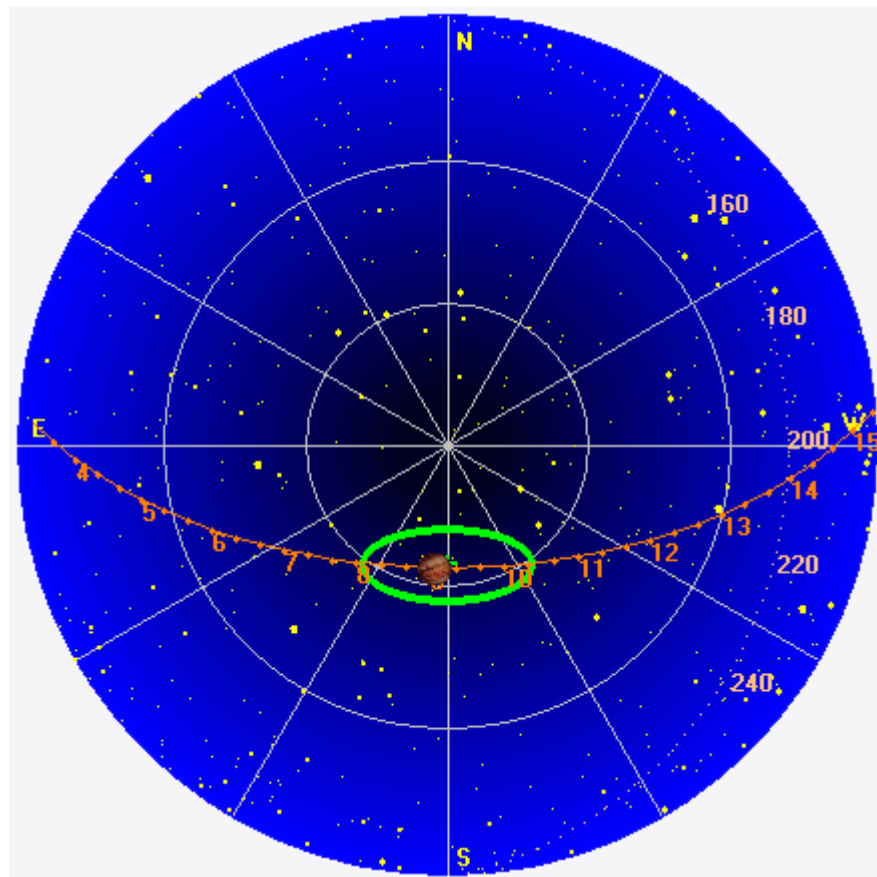
Jupiter was -15° to $+10^\circ$ off axis.

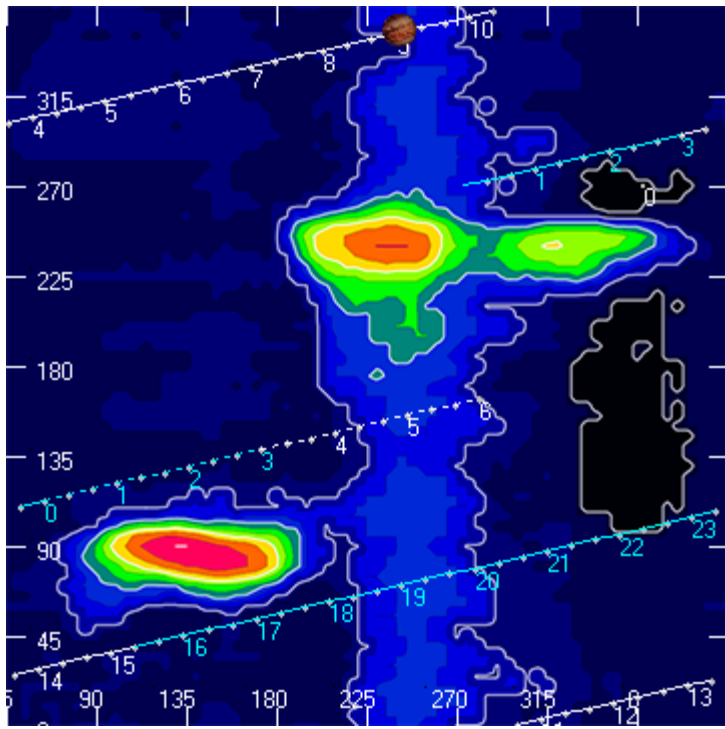
Jupiter was leading the Sun by 126° .

--

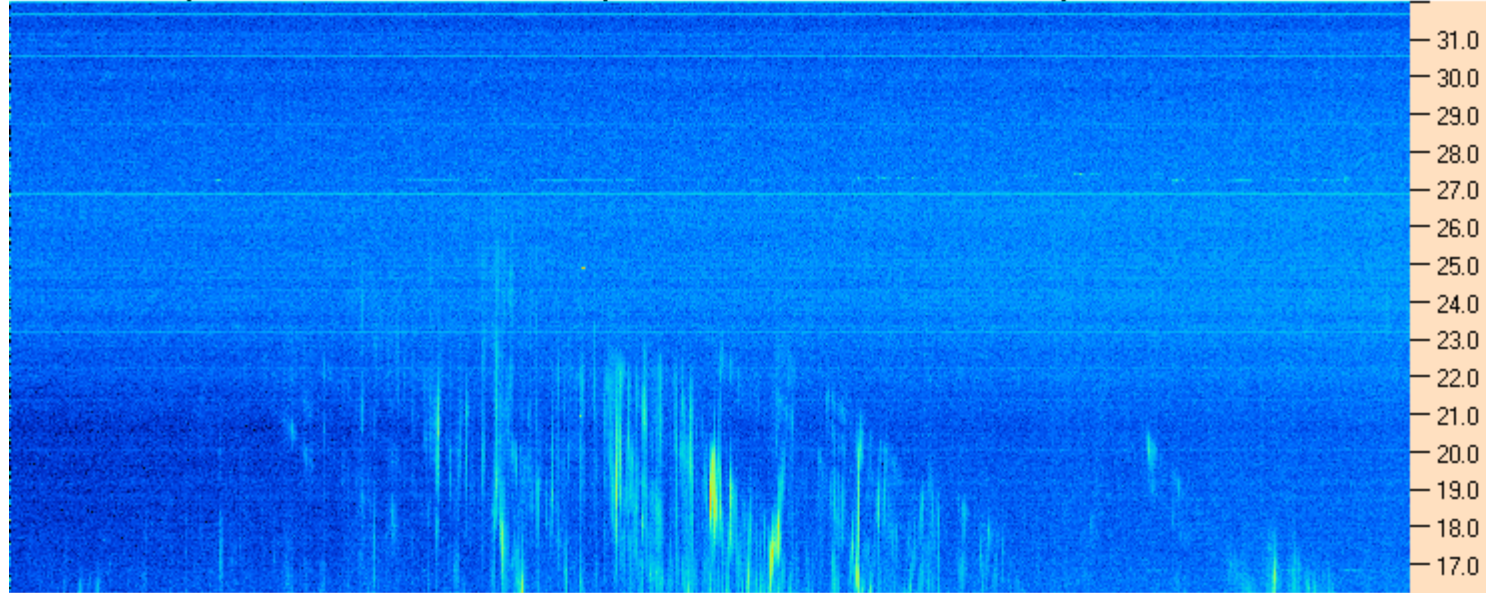
Dave

AJ4CO Observatory 19 Jan 2016, log entry 557





AJ4CO Observatory 19 Jan 2016 - DPS 30 kHz IF on TFD Array in CP Mode - RCP MC +13 dB Correction Array 2014 12 18 B.csv Offset 2050 Gain 5.0



AJ4CO Observatory 19 Jan 2016 - DPS 30 kHz IF on TFD Array in CP Mode - LCP MC +13 dB Correction Array 2014 12 18 B.csv Offset 2050 Gain 5.0

