

Subject: [radiojove-data] 18 Jan 2016 non-Io-B/D

From: Dave Typinski <davetyp@typnet.net>

Date: 01/22/2016 19:28

To: RadioJove-Data <radiojove-data@lists.nasa.gov>

Adding to Tom & Nathan & Wes's nice reports, here's some non-Io-B and non-Io-D from Monday morning.

RCP dominant L bursting 0935-1052 UTC from 16 to 32 MHz, positive drift emission envelope, no modulation lanes visible.

LCP dominant L bursting 0928-1019 UTC from 16 to 18 MHz, zero drift emission envelope, no modulation lanes visible.

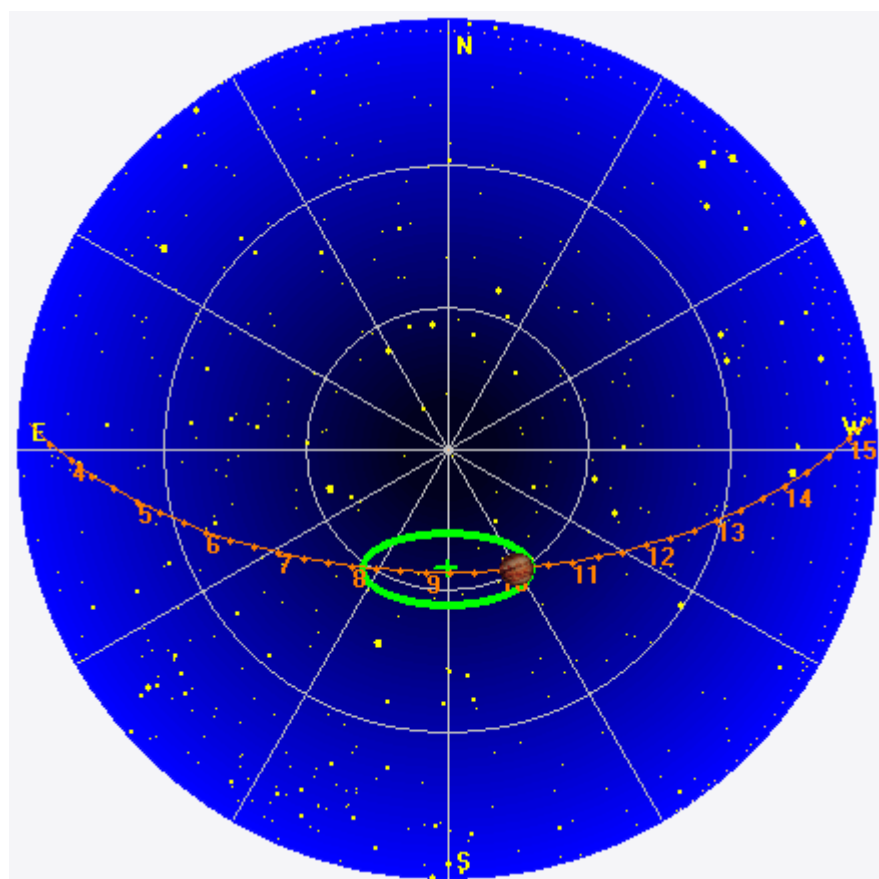
Jupiter was $+3^\circ$ to $+23^\circ$ off axis.

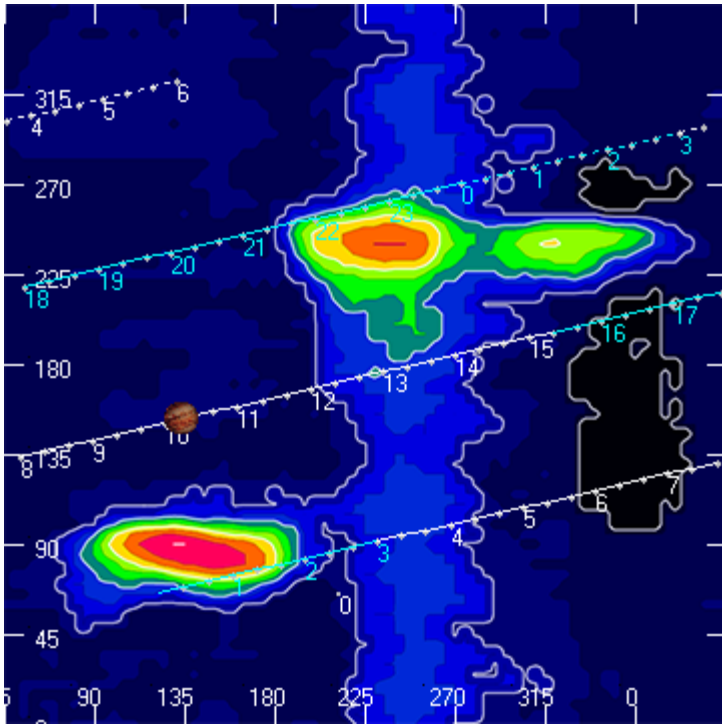
Jupiter was leading the Sun by 125° .

--

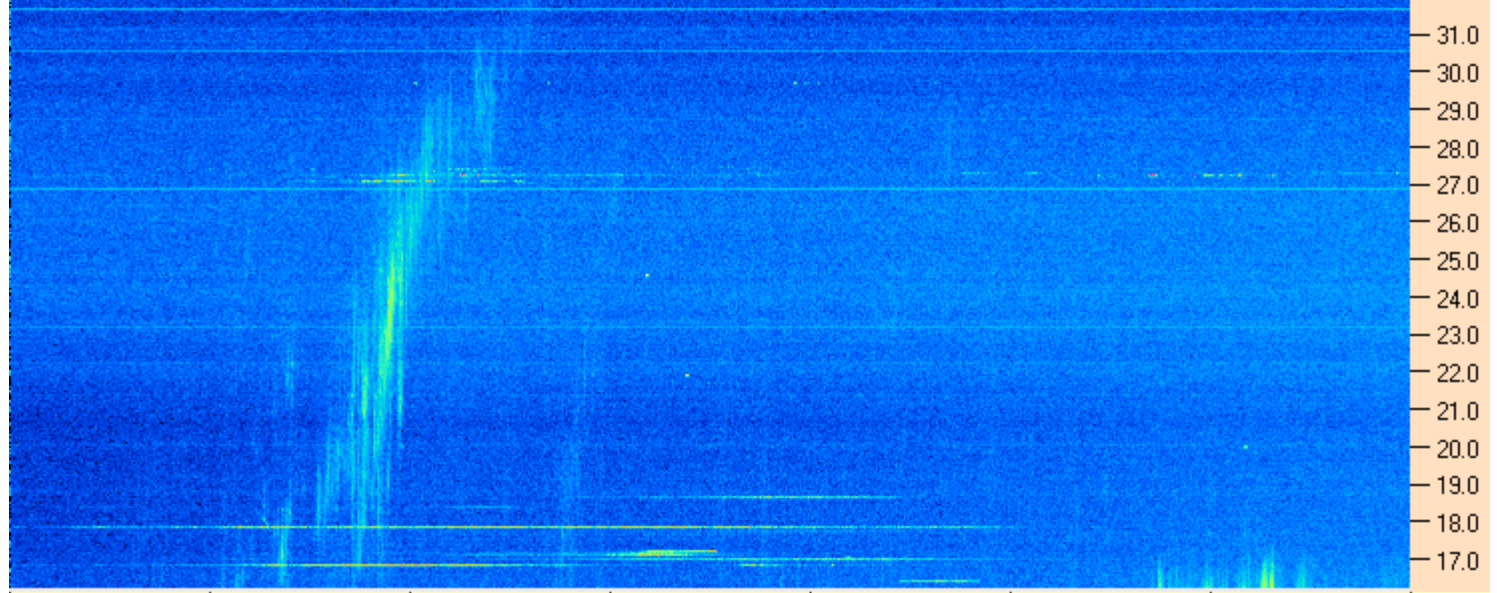
Dave

AJ4CO Observatory 18 Jan 2016, log entry 555 - 556





AJ4CO Observatory 18 Jan 2016 - DPS 30 kHz IF on TFD Array in CP Mode - RCP MC +13 dB Correction Array 2014 12 18 B.csv Offset 2060 Gain 5.0



09:20:00 09:34:17 09:48:34 10:02:52 10:17:09 10:31:26 10:45:43 11:00:00

AJ4CO Observatory 18 Jan 2016 - DPS 30 kHz IF on TFD Array in CP Mode - LCP MC +13 dB Correction Array 2014 12 18 B.csv Offset 2060 Gain 5.0

