

Subject: [radiojove-data] 17 Jan 2016 non-Io-A

From: Dave Typinski <davetyp@typnet.net>

Date: 01/22/2016 19:27

To: RadioJove-Data <radiojove-data@lists.nasa.gov>

Adding to Tom & Nathan & Jim's nice reports, here's some non-Io-A from Sunday morning.

RCP dominant L bursting 0636-0837 UTC from 16 to 24 MHz, positive then negative drift emission envelope, no modulation lanes visible.

Local thunderstorm lightning activity present. Kind of interesting how the polarization strip chart really cleans it up.

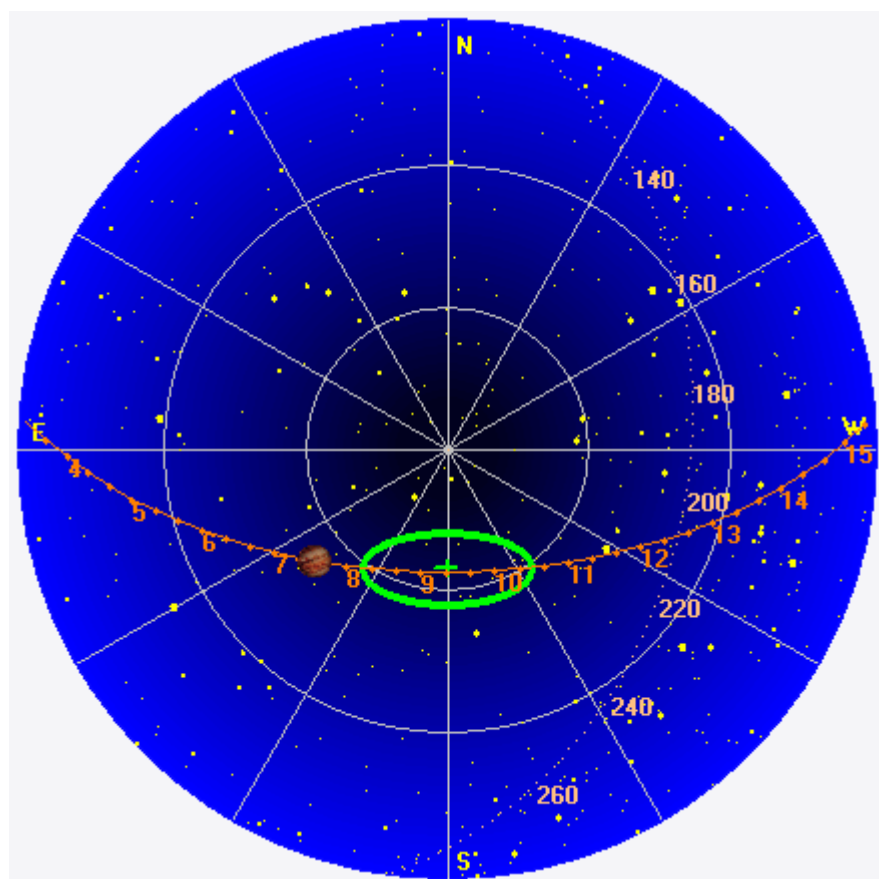
Jupiter was -42° to -11° off axis.

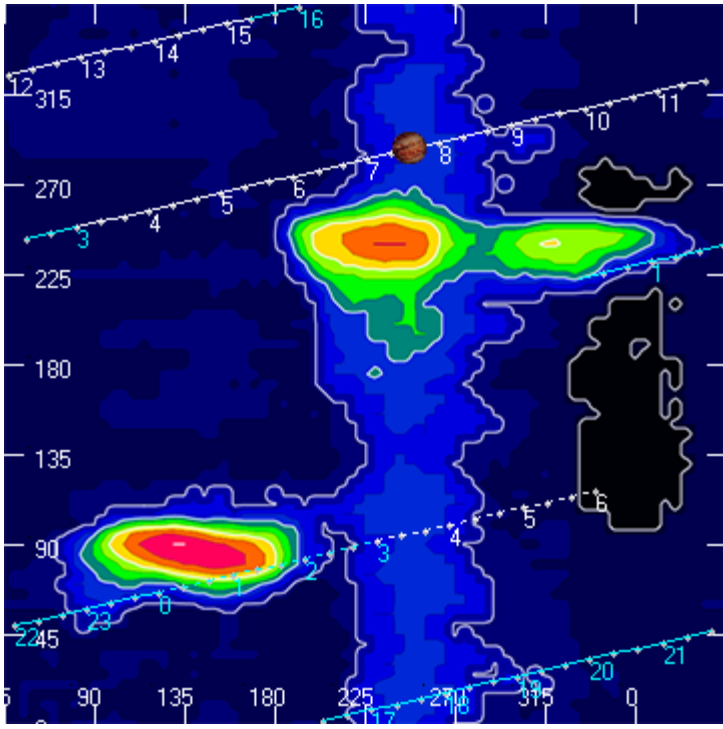
Jupiter was leading the Sun by 124° .

--

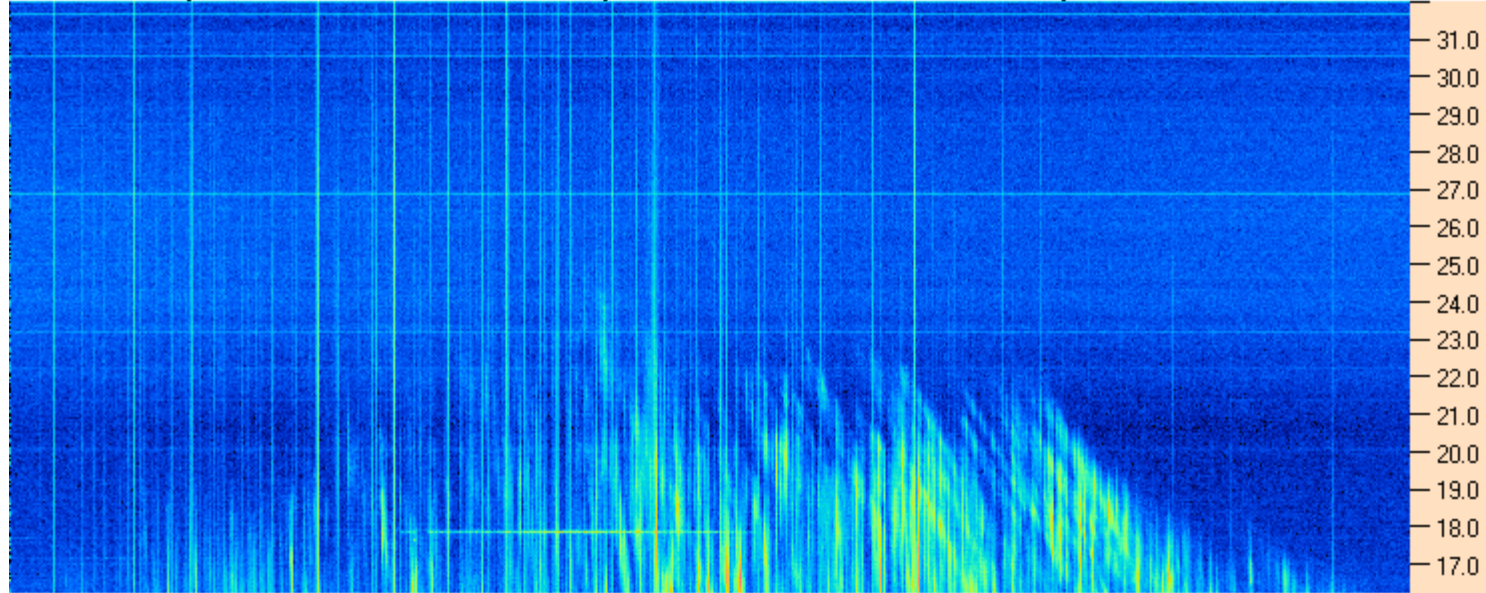
Dave

AJ4CO Observatory 17 Jan 2016, log entry 554





AJ4CO Observatory 17 Jan 2016 - DPS 30 kHz IF on TFD Array in CP Mode - RCP MC +13 dB Correction Array 2014 12 18 B.csv Offset 2050 Gain 5.0



06:20:00 06:40:43 07:01:26 07:22:09 07:42:52 08:03:34 08:24:17 08:45:00

AJ4CO Observatory 17 Jan 2016 - DPS 30 kHz IF on TFD Array in CP Mode - LCP MC +13 dB Correction Array 2014 12 18 B.csv Offset 2050 Gain 5.0

