

Subject: [radiojove-data] 11 Jan 2016 non-Io-A

From: Dave Typinski <davetyp@typnet.net>

Date: 01/22/2016 01:02

To: RadioJove-Data <radiojove-data@lists.nasa.gov>

Adding to Tom's nice report, here's some non-Io-A from Monday morning.

RCP dominant L bursting 1119-1208 UTC from 17 to 27 MHz, negative drift envelope, no modulation lanes visible.

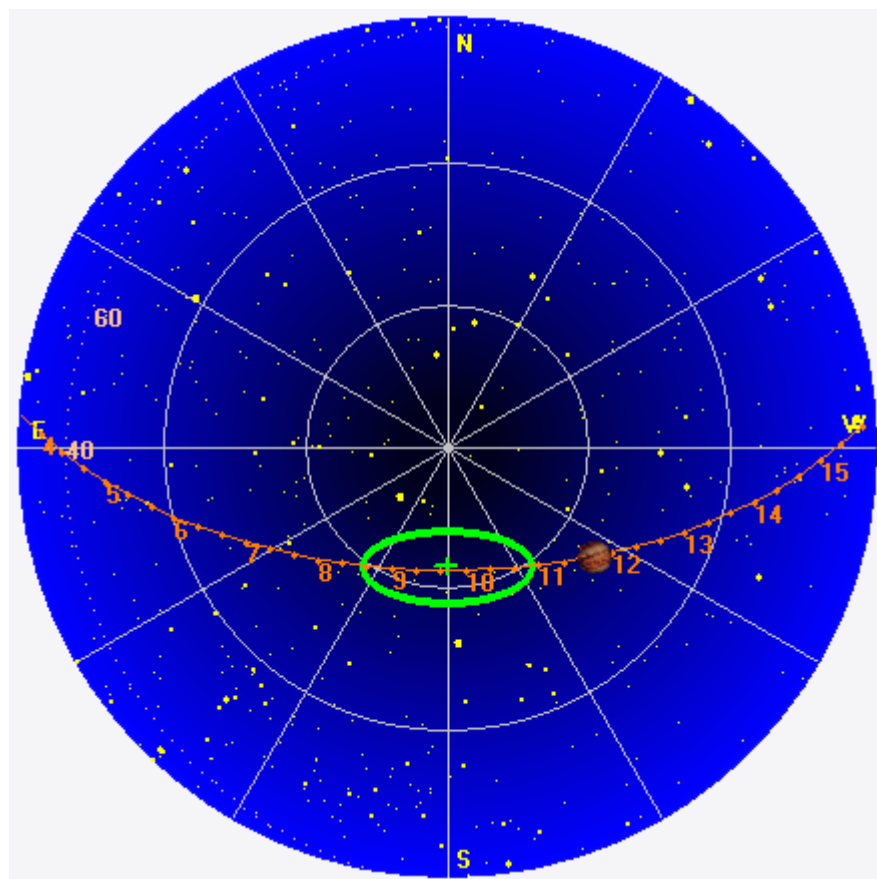
Jupiter was $+23^\circ$ to $+35^\circ$ off axis.

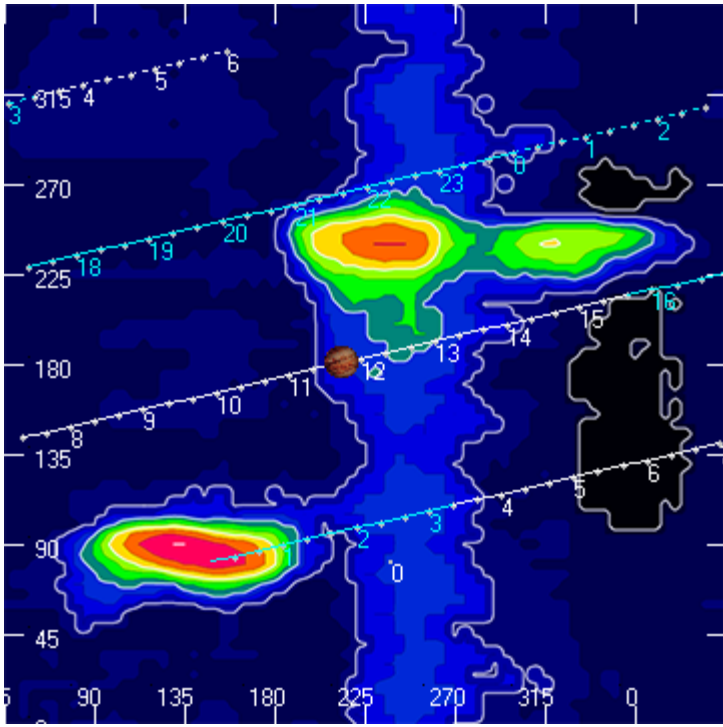
Jupiter was leading the Sun by 117° .

--

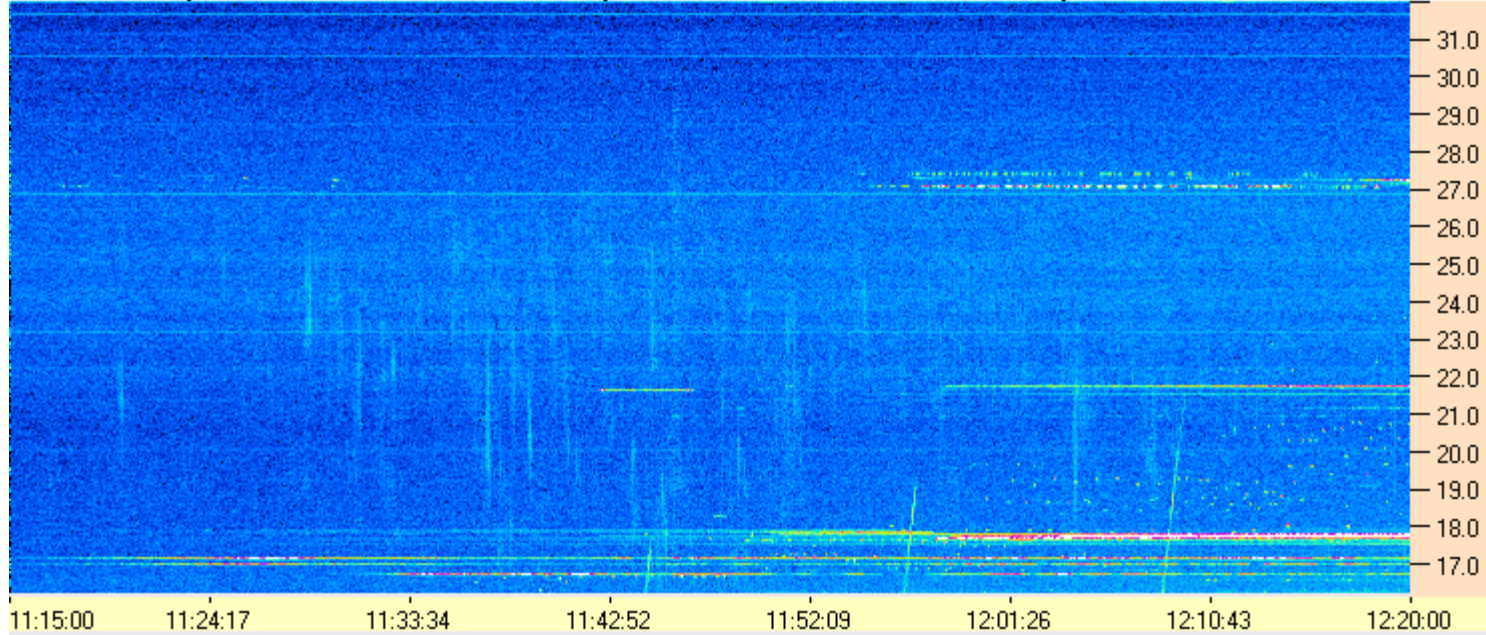
Dave

AJ4CO Observatory 11 Jan 2016, log entry 542





AJ4CO Observatory 11 Jan 2016 - DPS 30 kHz IF on TFD Array in CP Mode - RCP MC +13 dB Correction Array 2014 12 18 B.csv Offset 2075 Gain 5.0



AJ4CO Observatory 11 Jan 2016 - DPS 30 kHz IF on TFD Array in CP Mode - LCP MC +13 dB Correction Array 2014 12 18 B.csv Offset 2075 Gain 5.0

