

**Subject:** [radiojove-data] 10 Jan 2016 non-Io-A

**From:** Dave Typinski <davetyp@typnet.net>

**Date:** 01/11/2016 22:23

**To:** RadioJove-Data <radiojove-data@lists.nasa.gov>

Here's some non-Io-A from Sunday morning.

RCP dominant L bursting 0814-0852 UTC from 16 to 21 MHz, negative drift envelope, no modulation lanes visible.

Intermittent line noise.

Jupiter was  $-24^\circ$  to  $-15^\circ$  off axis.

Jupiter was leading the Sun by  $116^\circ$ .

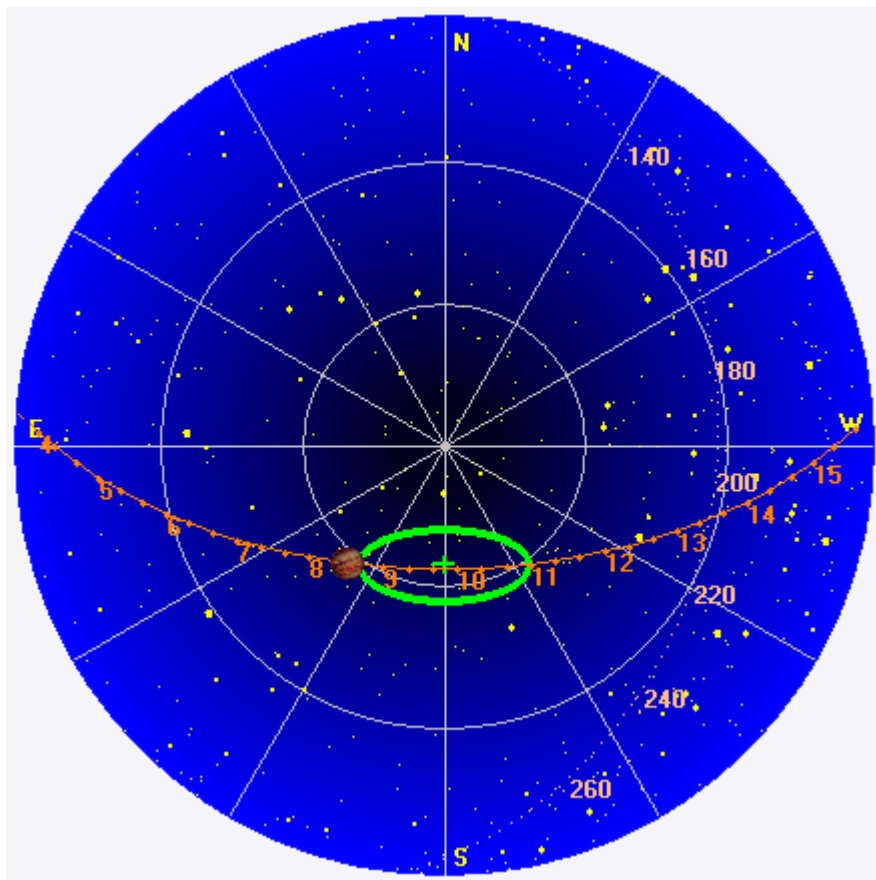
--

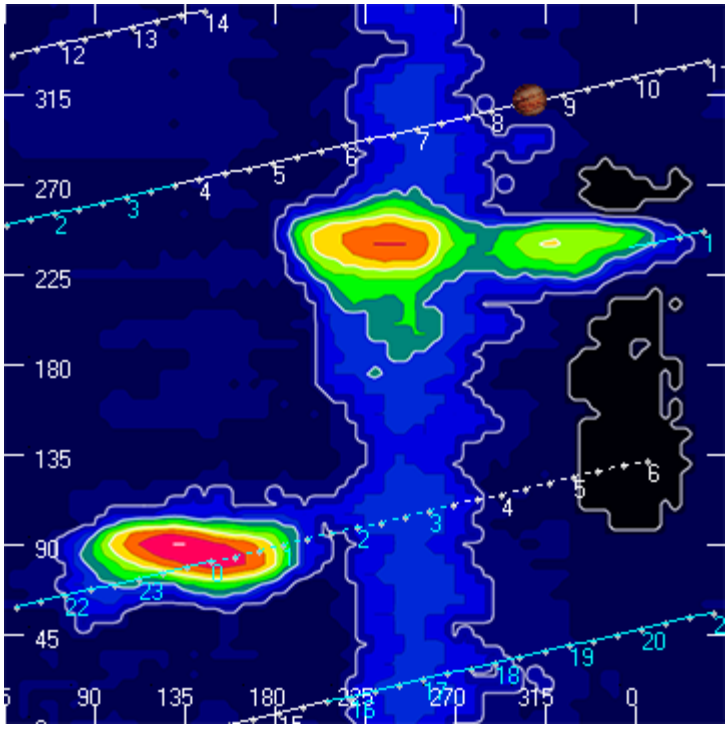
Dave

---

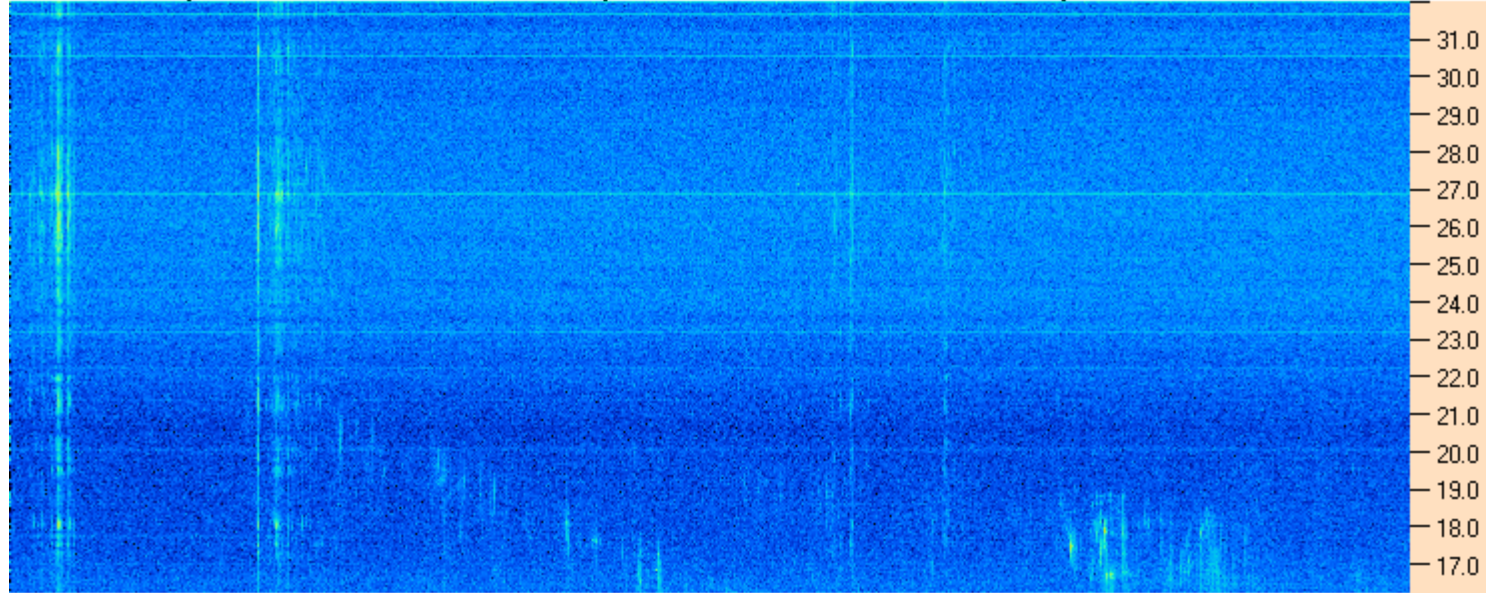
**AJ4CO Observatory 10 Jan 2016, log entry 541**

---





AJ4CO Observatory 10 Jan 2016 - DPS 30 kHz IF on TFD Array in CP Mode - RCP MC +13 dB Correction Array 2014 12 18 B.csv Offset 2025 Gain 5.0



08:00:00 08:08:34 08:17:09 08:25:43 08:34:17 08:42:52 08:51:26 09:00:00

AJ4CO Observatory 10 Jan 2016 - DPS 30 kHz IF on TFD Array in CP Mode - LCP MC +13 dB Correction Array 2014 12 18 B.csv Offset 2025 Gain 5.0

