

**Subject:** [radiojove-data] 09 Jan 2016 non-Io-A

**From:** Dave Typinski <davetyp@typnet.net>

**Date:** 01/11/2016 22:22

**To:** RadioJove-Data <radiojove-data@lists.nasa.gov>

Adding to Wes's nice report, here's some non-Io-A from Saturday morning.

RCP dominant L bursting 1017-1028 UTC from 16 to 25 MHz, zero drift envelope, positive drift modulation lanes visible.

Jupiter was  $+6^\circ$  to  $+9^\circ$  off axis.

Jupiter was leading the Sun by  $115^\circ$ .

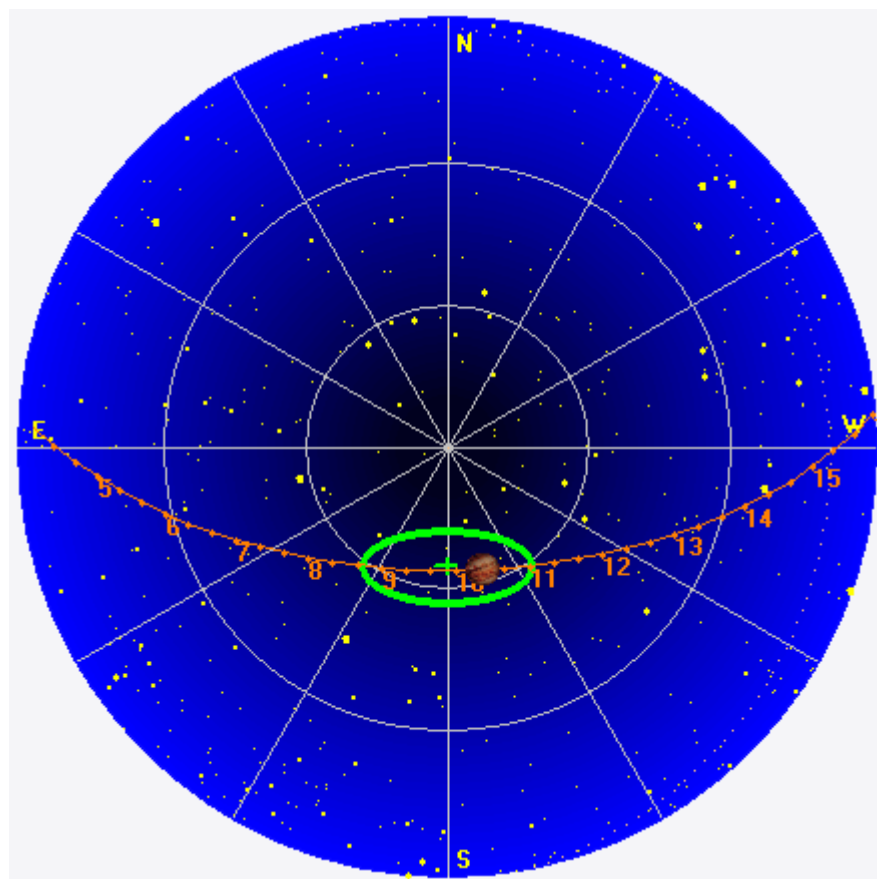
--

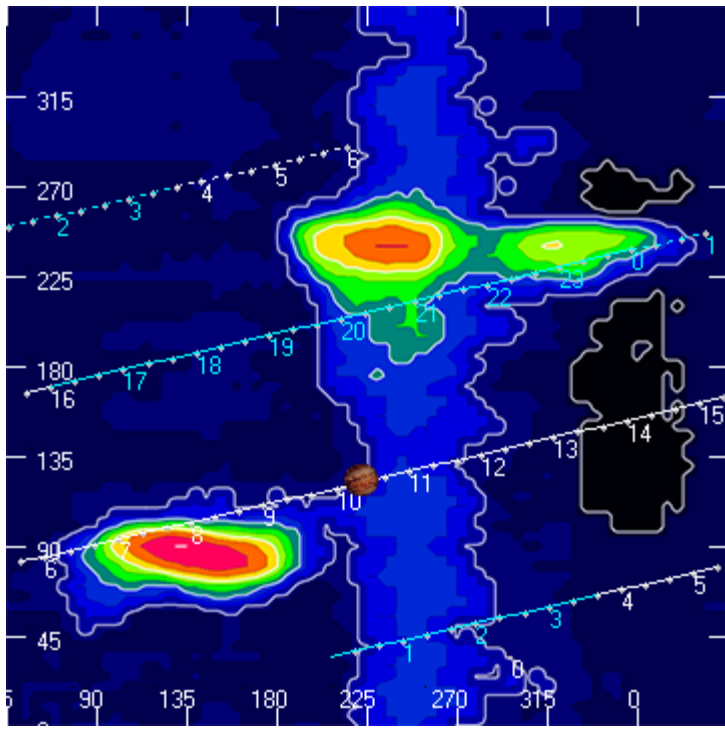
Dave

---

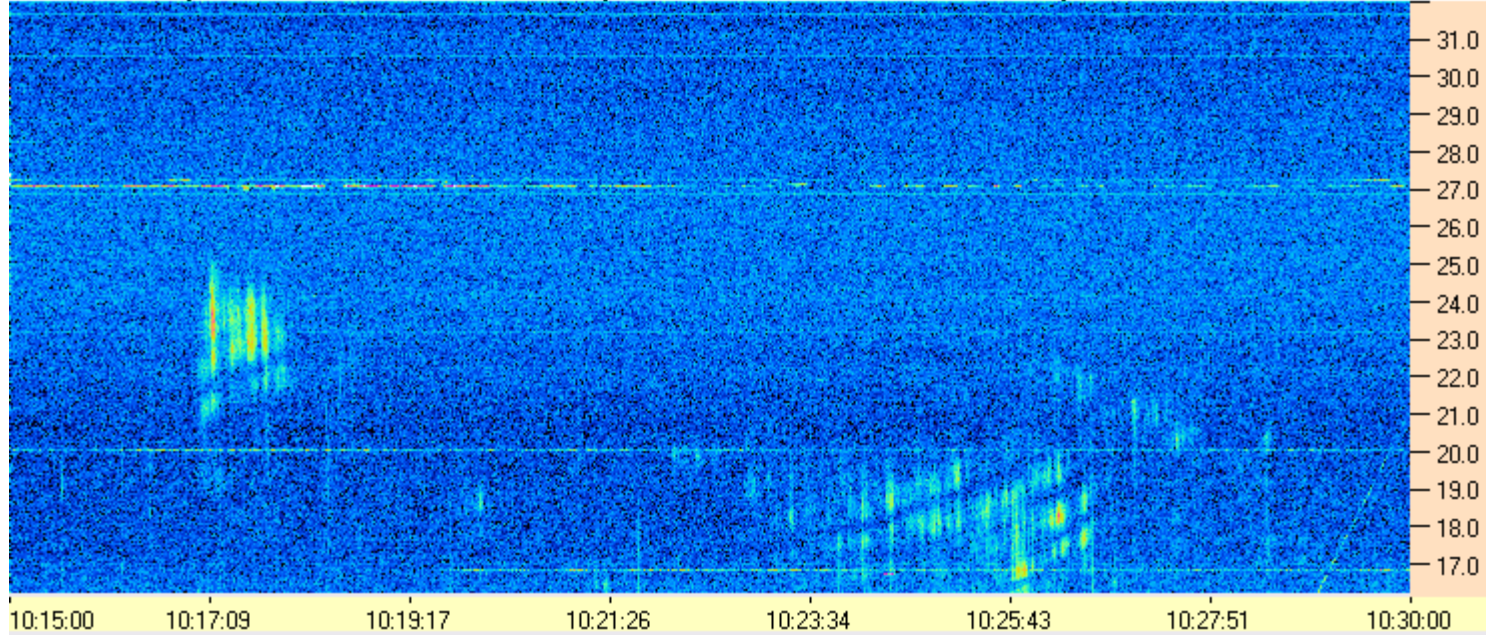
**AJ4CO Observatory 09 Jan 2016, log entry 540**

---





AJ4CO Observatory 09 Jan 2016 - DPS 30 kHz IF on TFD Array in CP Mode - RCP MC +13 dB Correction Array 2014 12 18 B.csv Offset 2050 Gain 5.0



AJ4CO Observatory 09 Jan 2016 - DPS 30 kHz IF on TFD Array in CP Mode - LCP MC +13 dB Correction Array 2014 12 18 B.csv Offset 2050 Gain 5.0

