

**Subject:** [radiojove-data] 07 Jan 2016 non-Io-A

**From:** Dave Typinski <davetyp@typnet.net>

**Date:** 01/08/2016 21:43

**To:** RadioJove-Data <radiojove-data@lists.nasa.gov>

Adding to Tom & Wes's nice reports, here's some non-Io-A from Thursday morning.

RCP dominant L bursting 0849-1008 UTC from 16 to 24 MHz, negative frequency drift emission envelope, no modulation lanes visible.

Some regional lightning activity around 0900 and some local line noise after 1000 UTC.

Jupiter was  $-18^\circ$  to  $+2^\circ$  off axis.

Jupiter was leading the Sun by  $113^\circ$ .

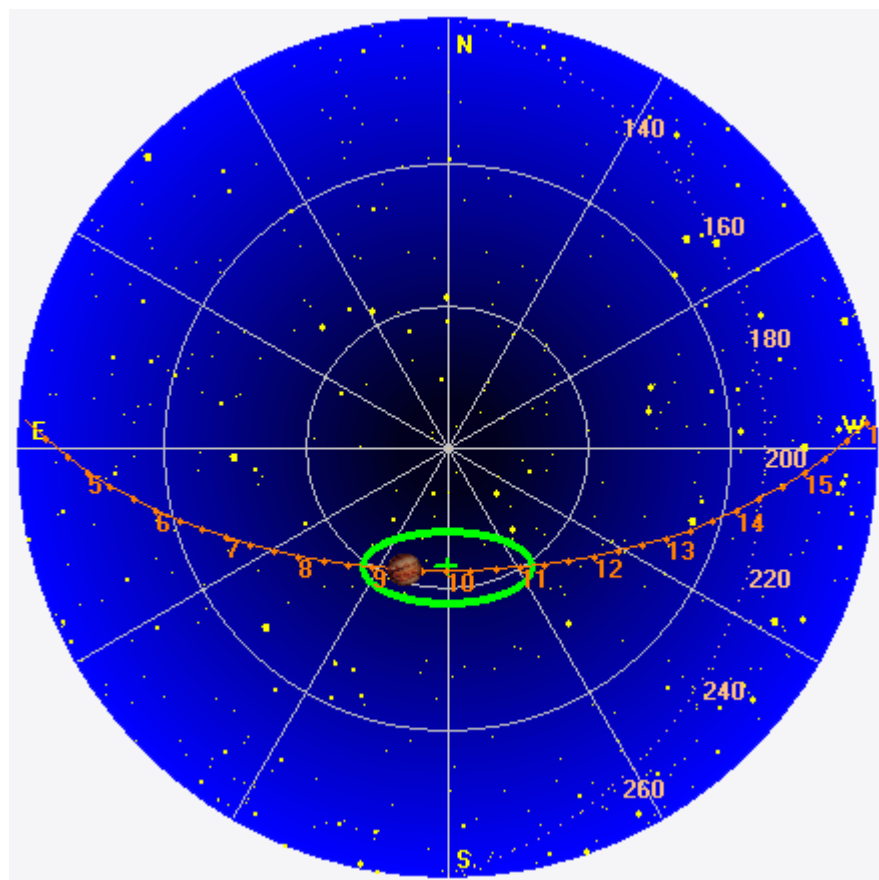
--

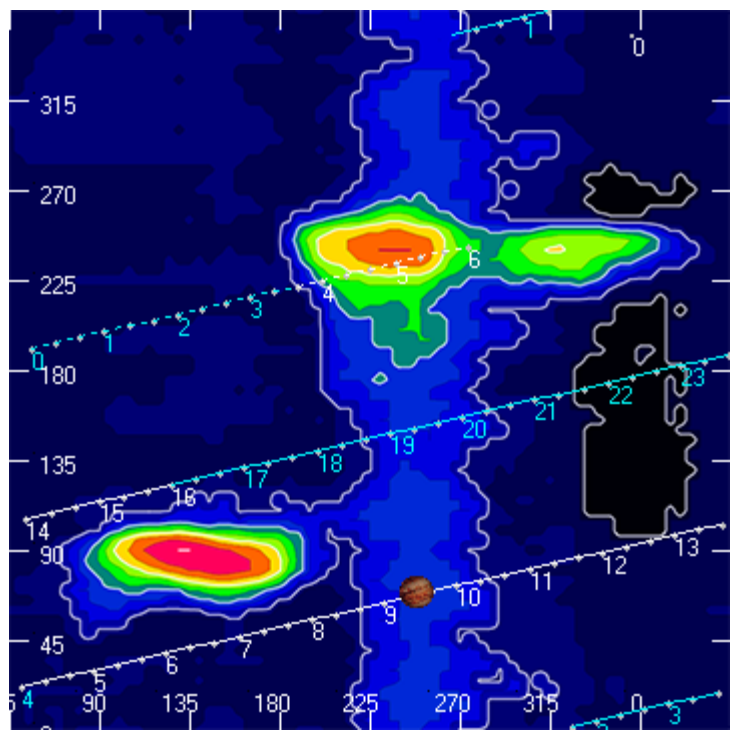
Dave

---

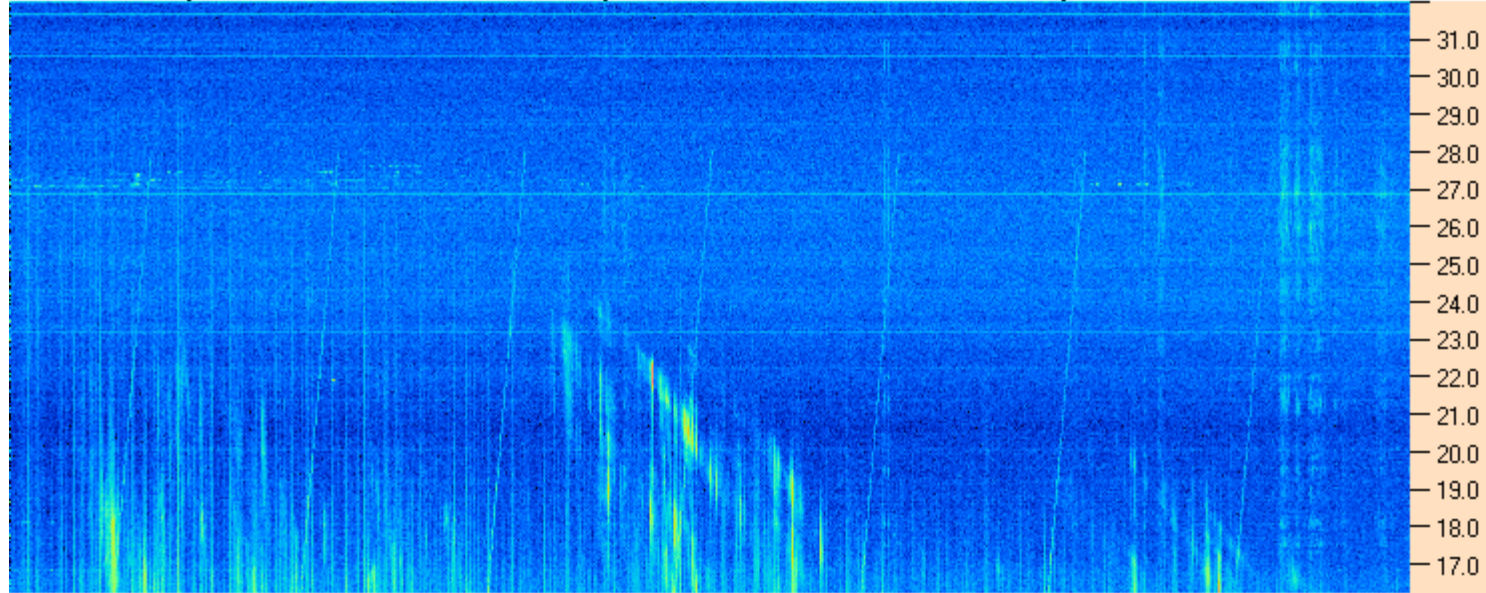
**AJ4CO Observatory 07 Jan 2016, log entry 533**

---





AJ4CO Observatory 07 Jan 2016 - DPS 30 kHz IF on TFD Array in CP Mode - RCP MC +13 dB Correction Array 2014 12 18 B.csv Offset 2050 Gain 5.0



08:45:00 08:57:52 09:10:43 09:23:34 09:36:26 09:49:17 10:02:09 10:15:00

AJ4CO Observatory 07 Jan 2016 - DPS 30 kHz IF on TFD Array in CP Mode - LCP MC +13 dB Correction Array 2014 12 18 B.csv Offset 2050 Gain 5.0

