

Subject: [radiojove-data] 04 Jan 2016 non-Io-A

From: Dave Typinski <davetyp@typnet.net>

Date: 01/05/2016 23:49

To: RadioJove-Data <radiojove-data@lists.nasa.gov>

Adding to Wes & Nathan's nice reports, here's some non-Io-A from Monday morning.

RCP dominant L bursting 1030-1148 UTC from 16 to 28 MHz, vertex late arcs, no modulation lanes visible.

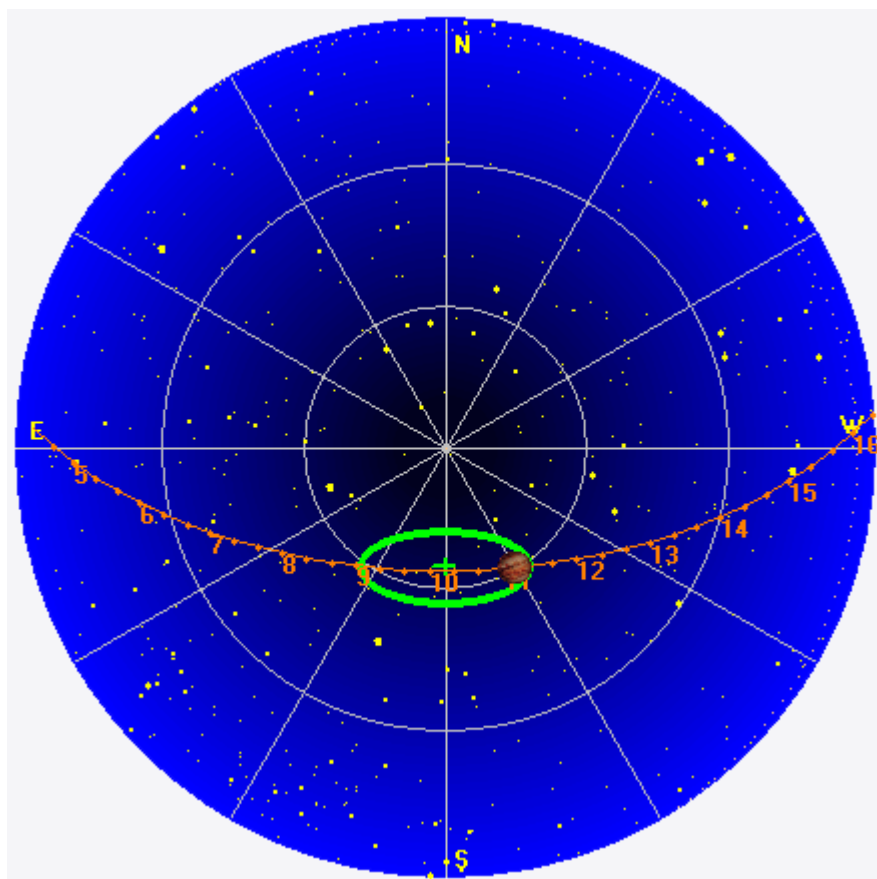
Jupiter was $+4^\circ$ to $+24^\circ$ off axis.

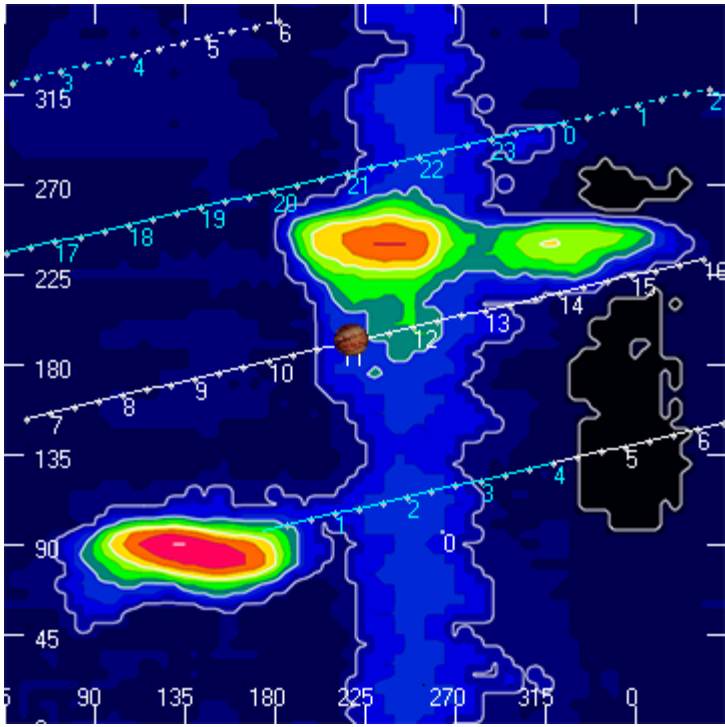
Jupiter was leading the Sun by 110° .

--

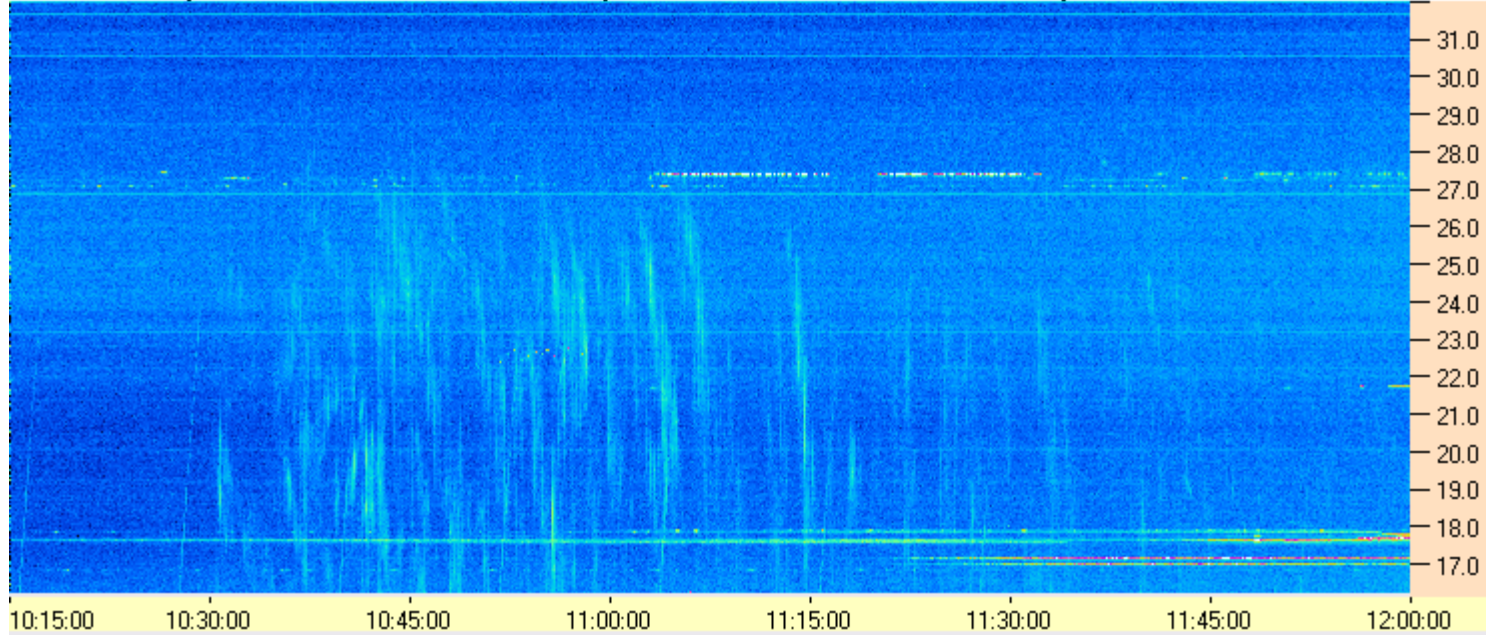
Dave

AJ4CO Observatory 04 Jan 2016, log entry 530





AJ4CO Observatory 04 Jan 2016 - DPS 30 kHz IF on TFD Array in CP Mode - RCP MC +13 dB Correction Array 2014 12 18 B.csv Offset 2050 Gain 5.0



AJ4CO Observatory 04 Jan 2016 - DPS 30 kHz IF on TFD Array in CP Mode - LCP MC +13 dB Correction Array 2014 12 18 B.csv Offset 2050 Gain 5.0

