

Subject: [radiojove-data] 02 Jan 2016 non-Io-A

From: Dave Typinski <davetyp@typnet.net>

Date: 01/04/2016 05:42

To: RadioJove-Data <radiojove-data@lists.nasa.gov>

Here's some weak non-Io-A from Saturday morning.

RCP dominant L bursting 0926-1049 UTC from 16 to 20 MHz, negative drift emission envelope, no modulation lanes visible.

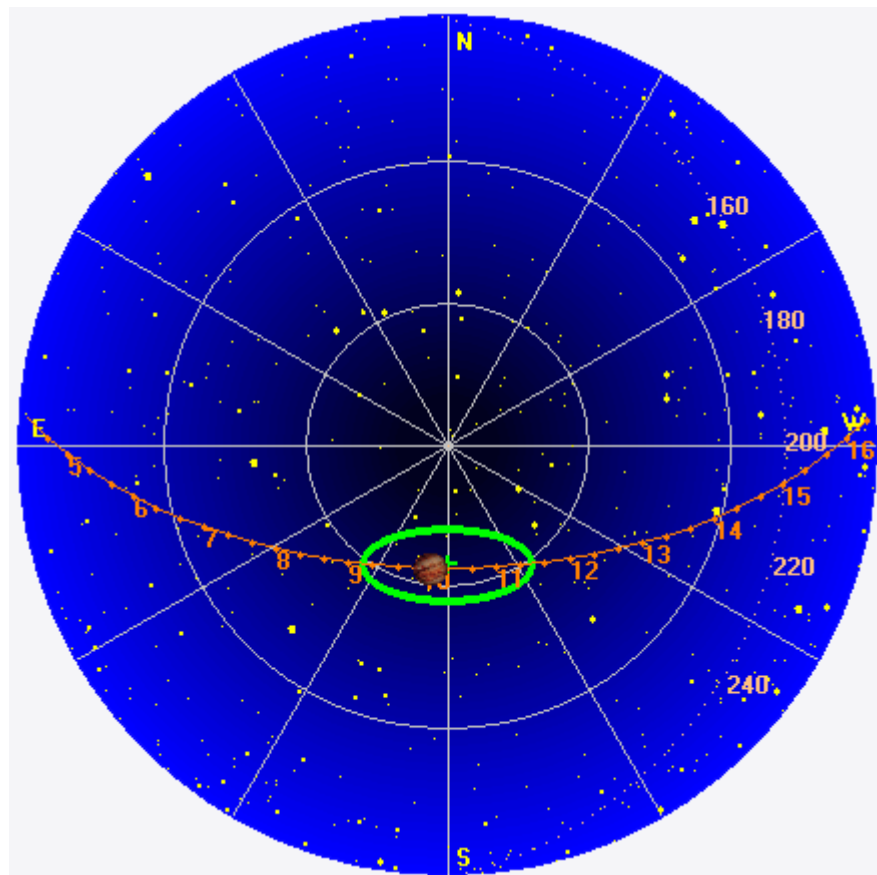
Jupiter was -14° to $+7^\circ$ off axis.

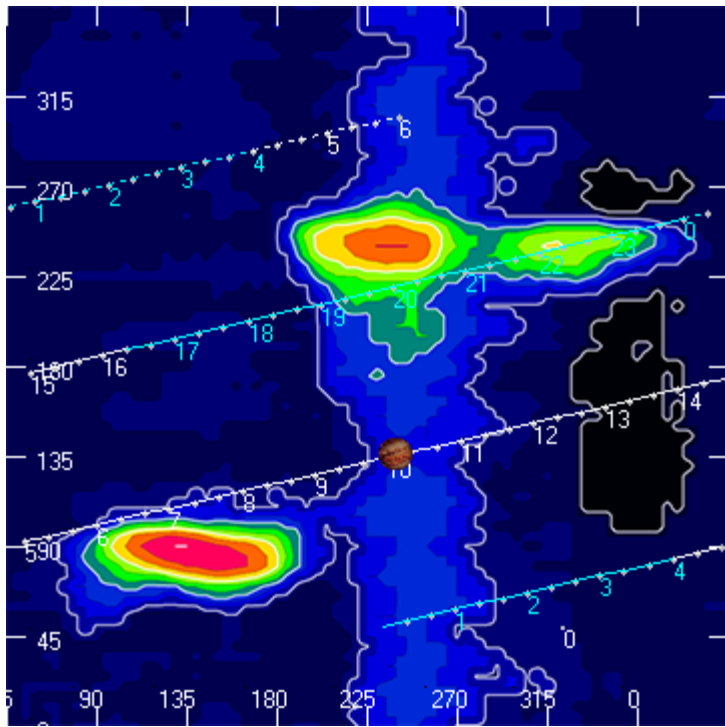
Jupiter was leading the Sun by 108° .

--

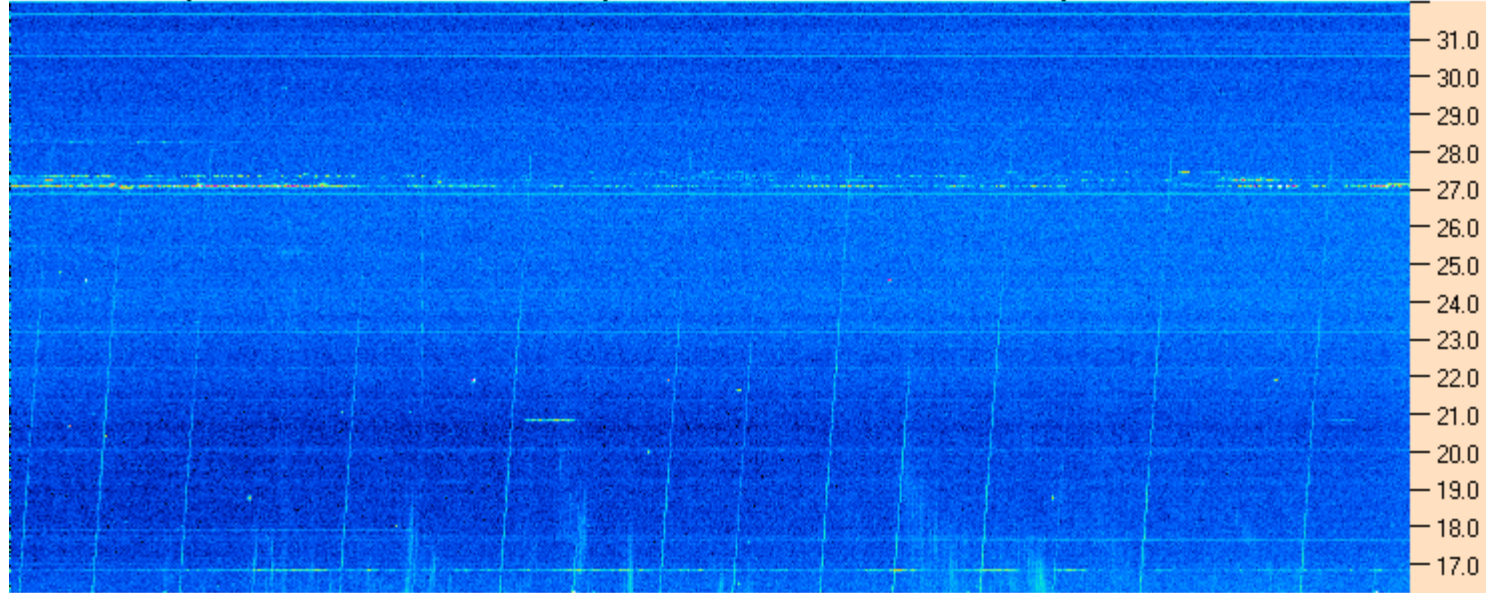
Dave

AJ4CO Observatory 02 Jan 2016, log entry 529





AJ4CO Observatory 02 Jan 2016 - DPS 30 kHz IF on TFD Array in CP Mode - RCP MC +13 dB Correction Array 2014 12 18 B.csv Offset 2050 Gain 5.0



09:15:00 09:30:00 09:45:00 10:00:00 10:15:00 10:30:00 10:45:00 11:00:00

AJ4CO Observatory 02 Jan 2016 - DPS 30 kHz IF on TFD Array in CP Mode - LCP MC +13 dB Correction Array 2014 12 18 B.csv Offset 2050 Gain 5.0

