

Subject: [radiojove-data] 31 Dec 2015 non-Io-C

From: Dave Typinski <davetyp@typnet.net>

Date: 01/01/2016 23:21

To: RadioJove-Data <radiojove-data@lists.nasa.gov>

Adding to Tom & Wes's nice reports, here's some Io-C from Thursday morning.

RCP dominant L bursting 0958-1051 UTC from 16 to 22 MHz, negative drift emission envelope, no modulation lanes visible.

Little bit of intermittent line noise in the background.

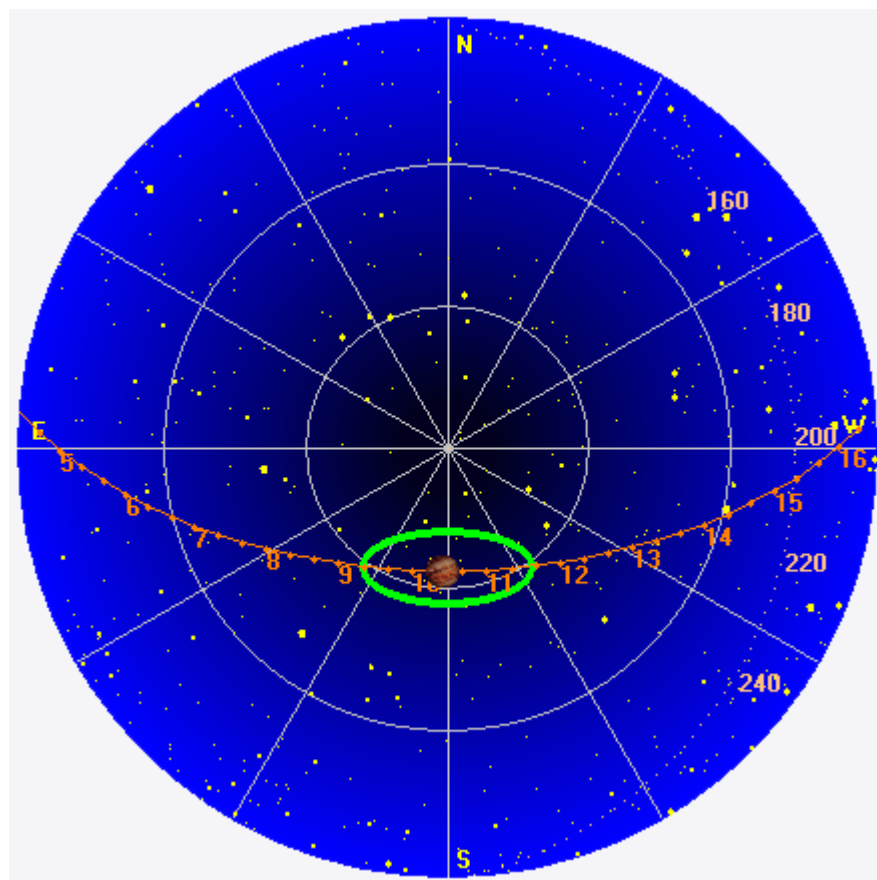
Jupiter was -8° to $+6^\circ$ off axis.

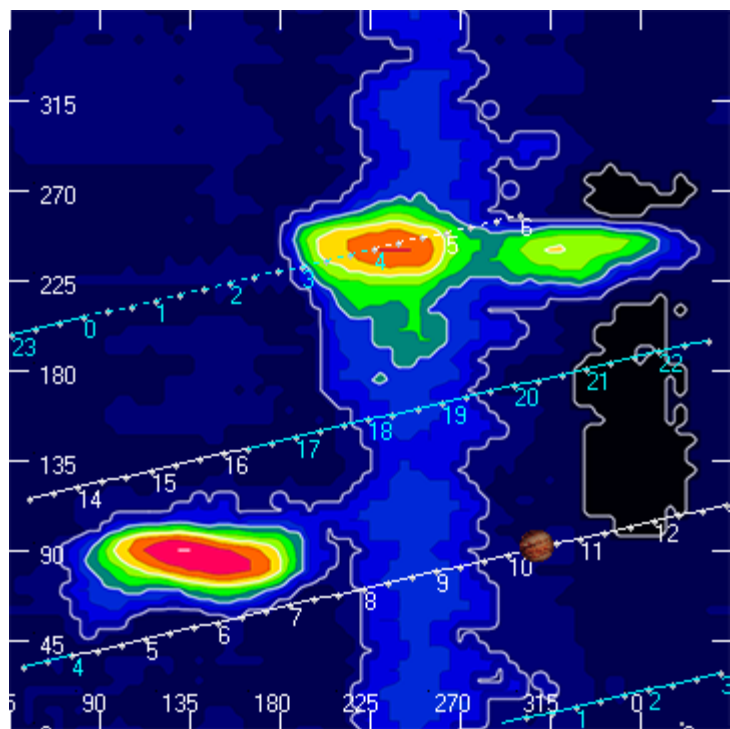
Jupiter was leading the Sun by 106° .

--

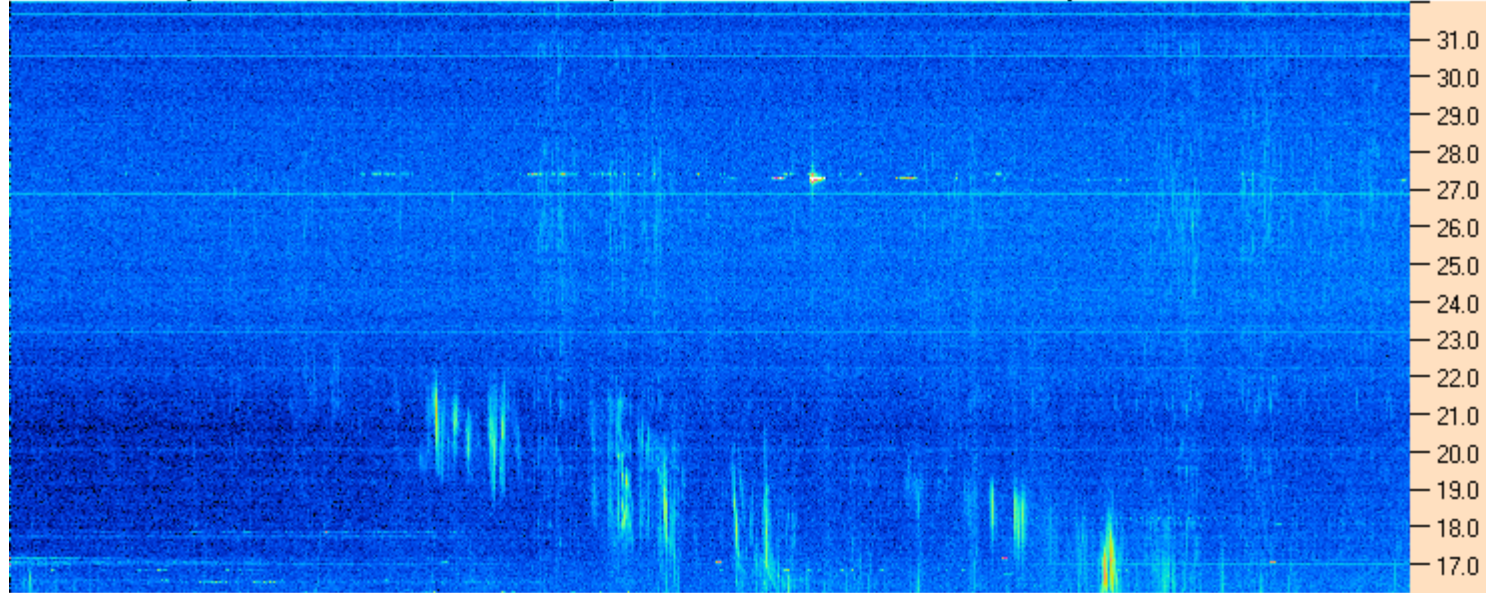
Dave

AJ4CO Observatory 31 Dec 2015, log entry 528





AJ4CO Observatory 31 Dec 2015 - DPS 30 kHz IF on TFD Array in CP Mode - RCP MC +13 dB Correction Array 2014 12 18 B.csv Offset 2050 Gain 5.0



09:40:00 09:51:26 10:02:52 10:14:17 10:25:43 10:37:09 10:48:34 11:00:00

AJ4CO Observatory 31 Dec 2015 - DPS 30 kHz IF on TFD Array in CP Mode - LCP MC +13 dB Correction Array 2014 12 18 B.csv Offset 2050 Gain 5.0

