

Subject: [radiojove-data] 30 Dec 2015 Io-A

From: Dave Typinski <davetyp@typnet.net>

Date: 12/31/2015 20:01

To: RadioJove-Data <radiojove-data@lists.nasa.gov>

Adding to Tom's nice report, here's some Io-A from Wednesday morning.

RCP dominant L bursting 1148-1256 UTC from 16 to 25 MHz, vertex late arcs, no modulation lanes visible.

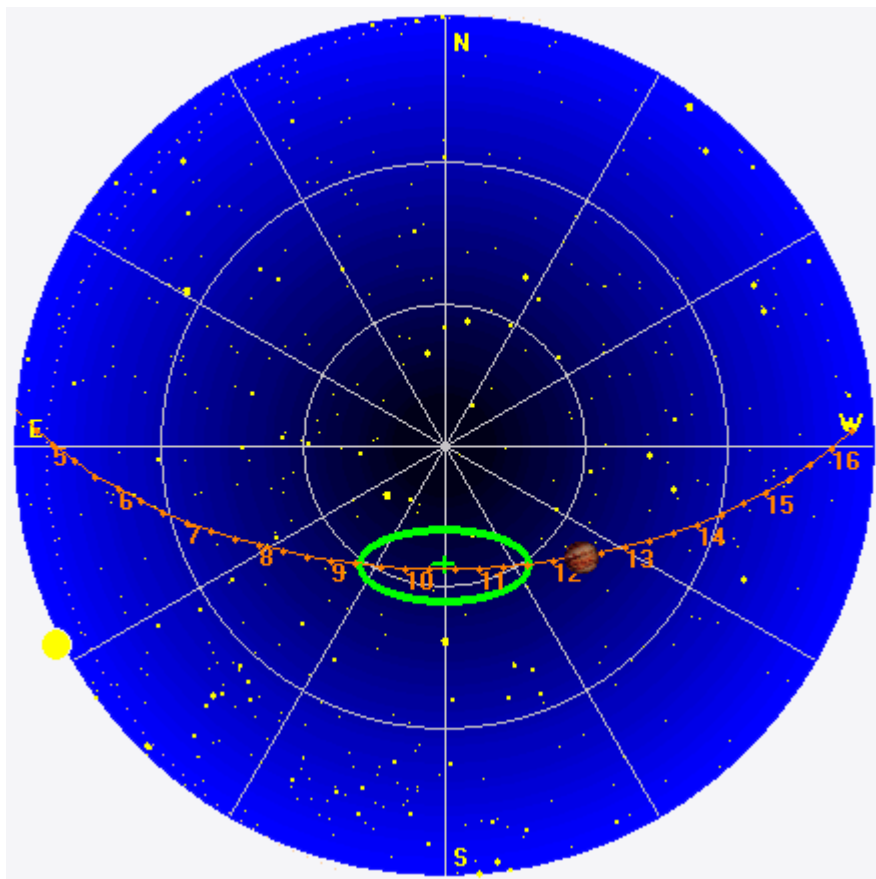
Jupiter was +19° to +36° off axis.

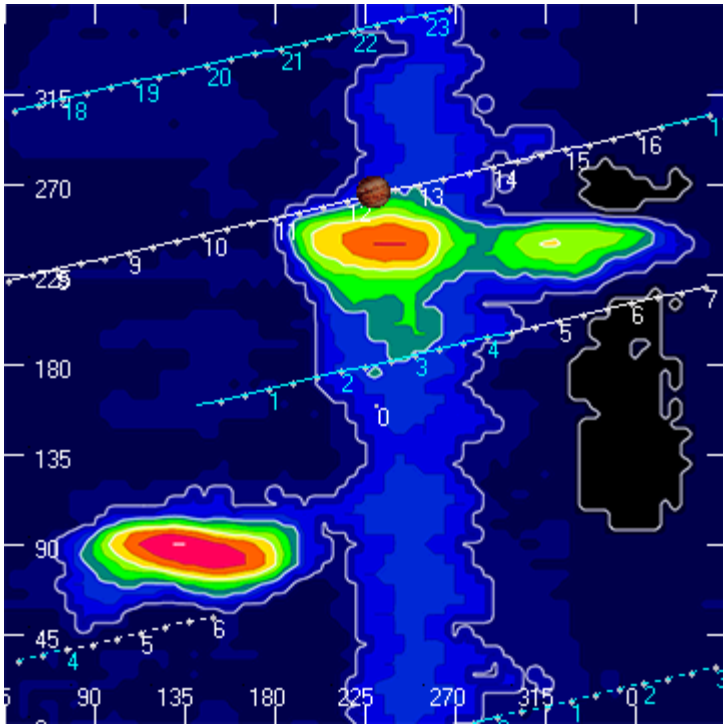
Jupiter was leading the Sun by 105°.

--

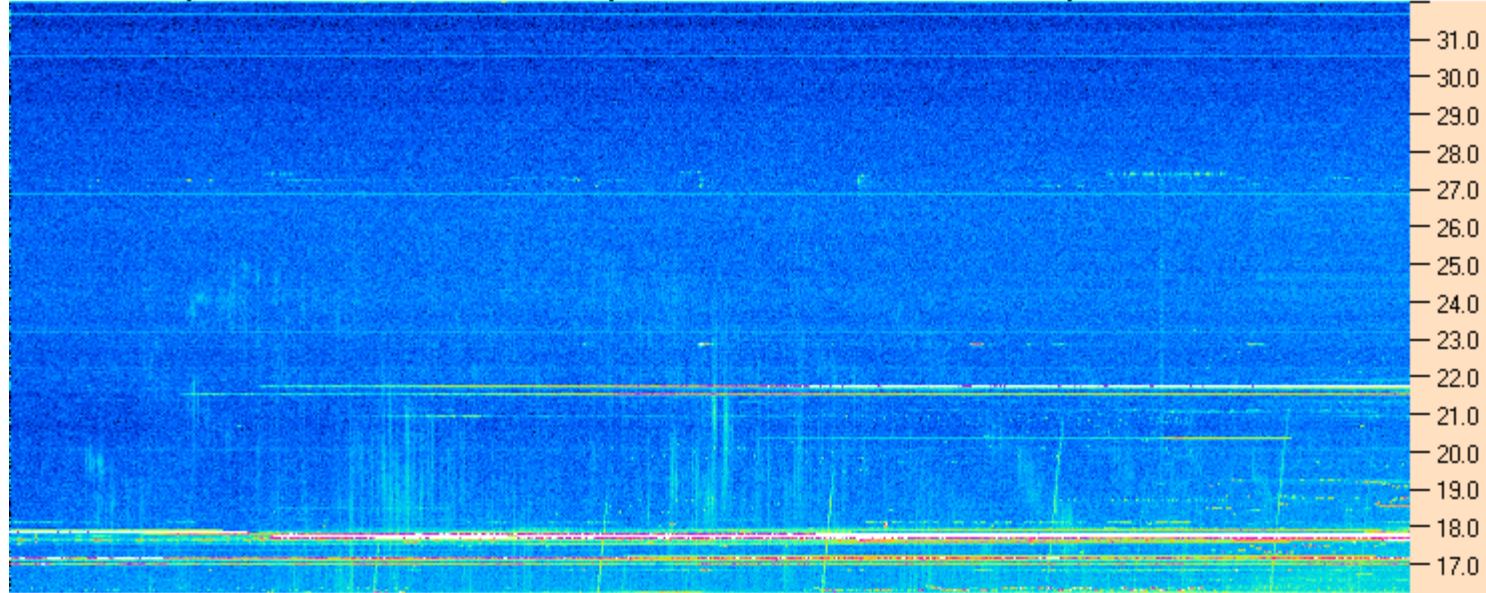
Dave

AJ4CO Observatory 30 Dec 2015, log entry 527





AJ4CO Observatory 30 Dec 2015 - DPS 30 kHz IF on TFD Array in CP Mode - RCP MC +13 dB Correction Array 2014 12 18 B.csv Offset 2060 Gain 5.0



11:45:00 11:55:43 12:06:26 12:17:09 12:27:51 12:38:34 12:49:17 13:00:00

AJ4CO Observatory 30 Dec 2015 - DPS 30 kHz IF on TFD Array in CP Mode - LCP MC +13 dB Correction Array 2014 12 18 B.csv Offset 2060 Gain 5.0

