

Subject: [radiojove-data] 28 Dec 2015 Io-A

From: Dave Typinski <davetyp@typnet.net>

Date: 12/30/2015 22:51

To: RadioJove-Data <radiojove-data@lists.nasa.gov>

Adding to Wes & Nathan's nice reports, here's some Io-A from Monday morning.

RCP dominant L bursting 0946-1145 UTC from 16 to 30 MHz, vertex late arcs, no modulation lanes visible.

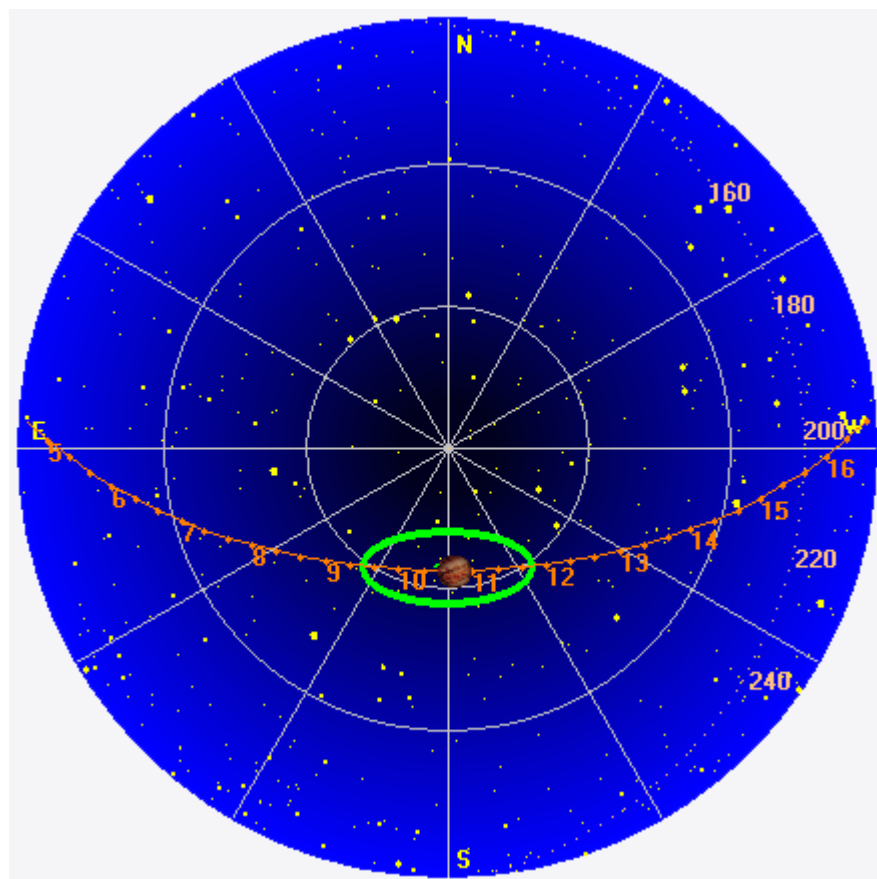
Jupiter was -14° to $+16^\circ$ off axis.

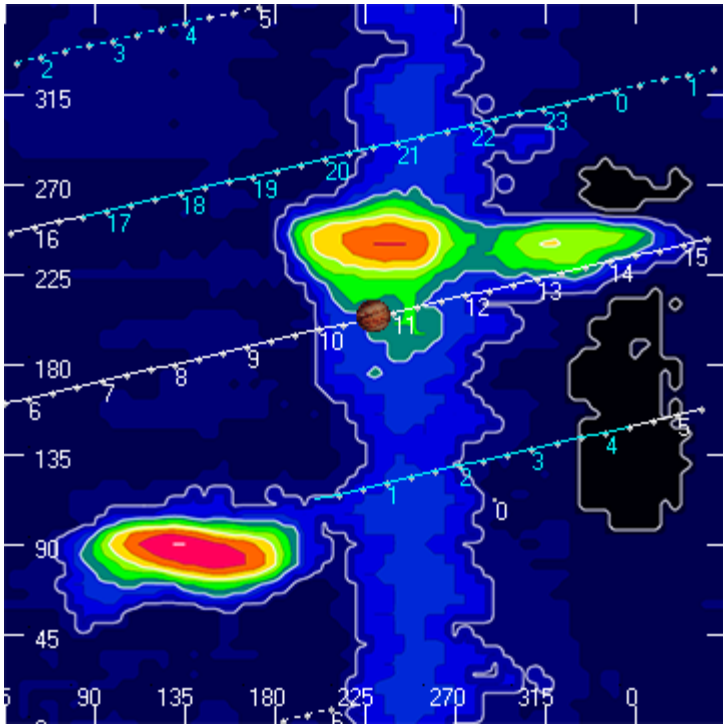
Jupiter was leading the Sun by 103° .

--

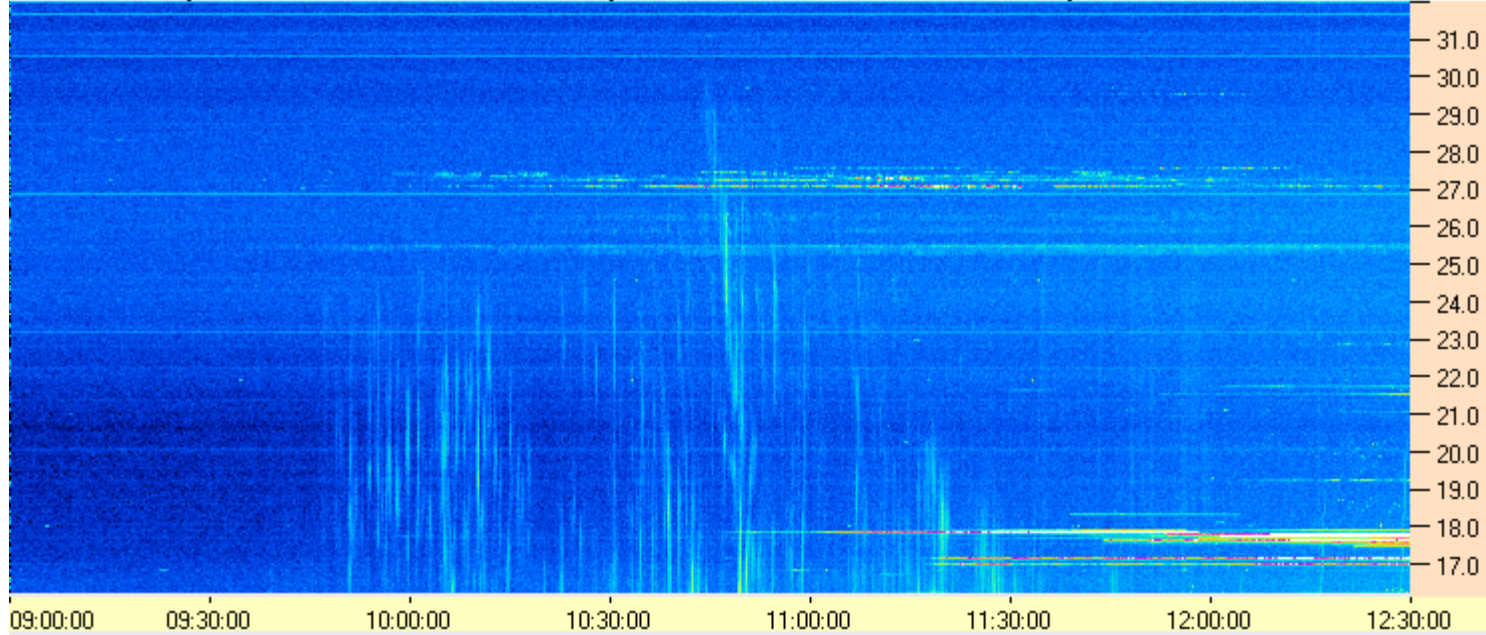
Dave

AJ4CO Observatory 28 Dec 2015, log entry 523





AJ4CO Observatory 28 Dec 2015 - DPS 30 kHz IF on TFD Array in CP Mode - RCP MC +13 dB Correction Array 2014 12 18 B.csv Offset 2050 Gain 5.0



AJ4CO Observatory 28 Dec 2015 - DPS 30 kHz IF on TFD Array in CP Mode - LCP MC +13 dB Correction Array 2014 12 18 B.csv Offset 2050 Gain 5.0

