

Subject: [radiojove-data] 27 Dec 2015 non-Io-B

From: Dave Typinski <davetyp@typnet.net>

Date: 12/30/2015 00:58

To: RadioJove-Data <radiojove-data@lists.nasa.gov>

Adding to Tom's nice report, here's some non-Io-B from Sunday morning.

RCP dominant L bursting 1050-1228 UTC from 16 to 24 MHz, positive then negative drift emission envelope, no modulation lanes visible.

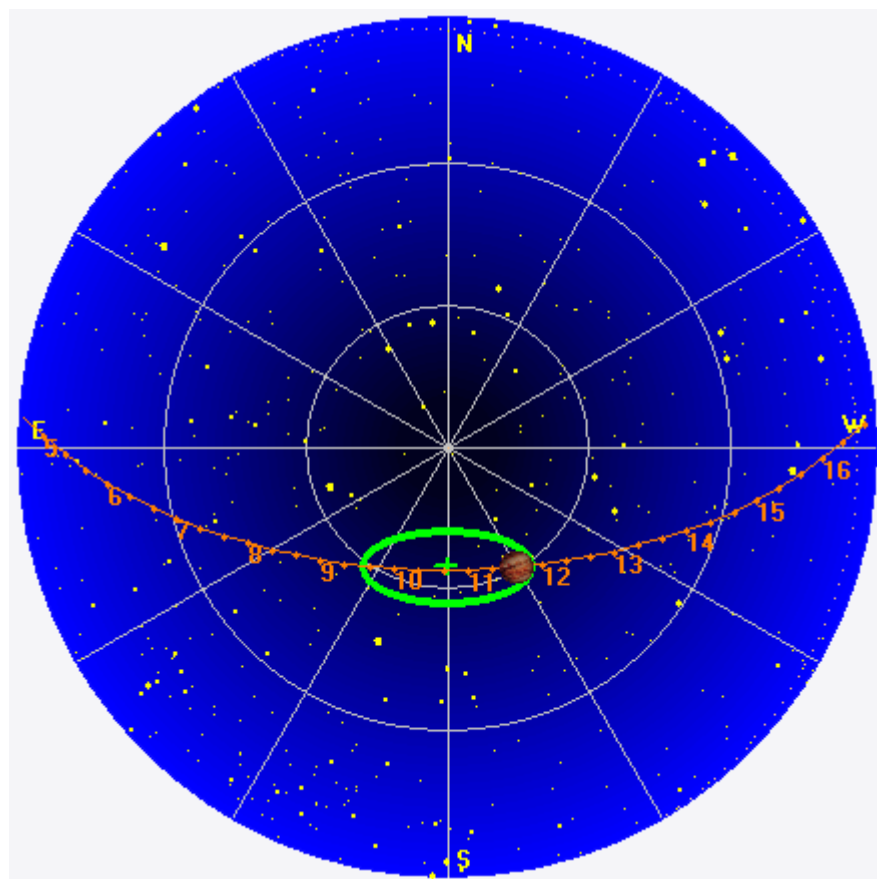
Jupiter was $+2^\circ$ to $+26^\circ$ off axis.

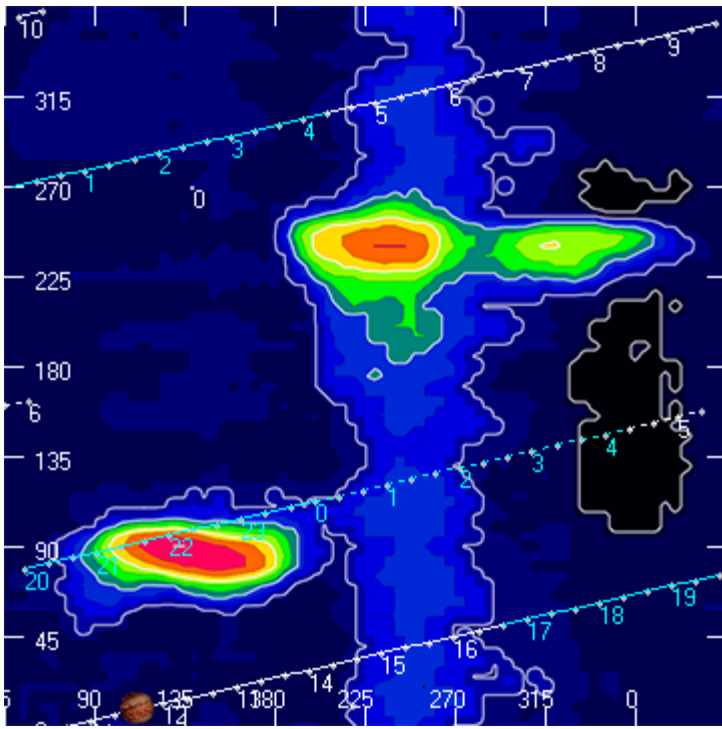
Jupiter was leading the Sun by 102° .

--

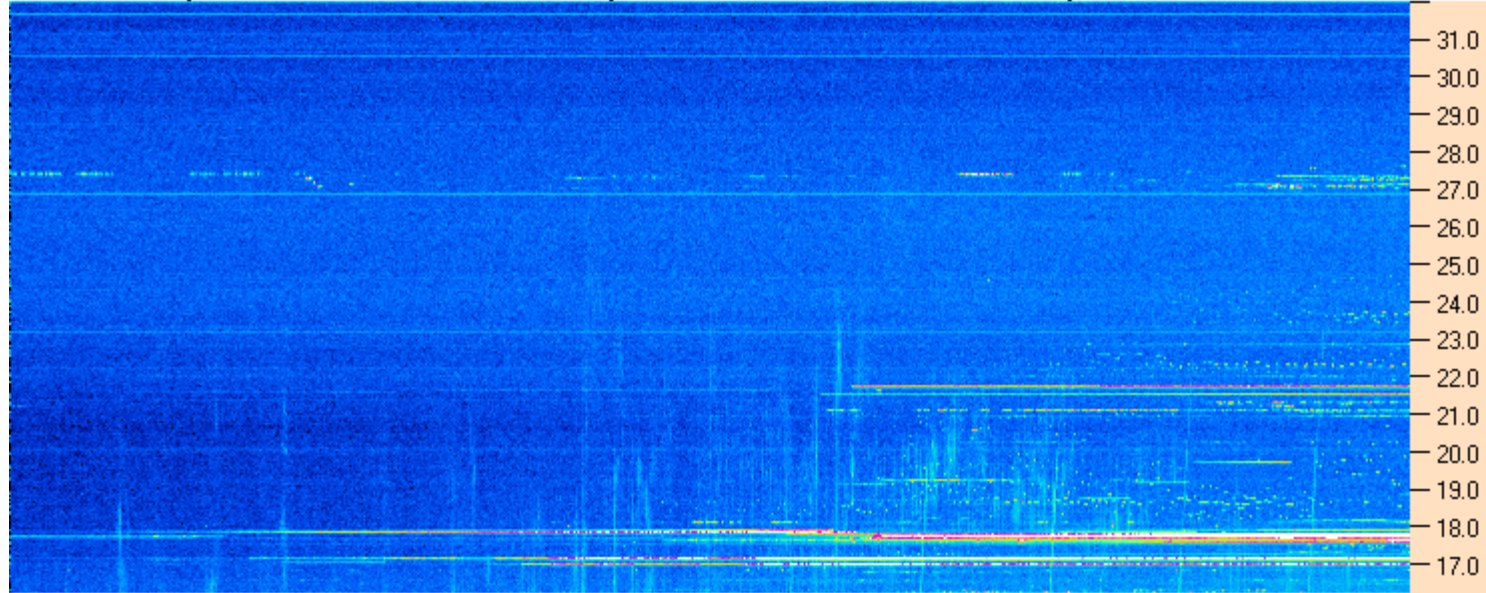
Dave

AJ4CO Observatory 27 Dec 2015, log entry 522





AJ4CO Observatory 27 Dec 2015 - DPS 30 kHz IF on TFD Array in CP Mode - RCP MC +13 dB Correction Array 2014 12 18 B.csv Offset 2060 Gain 5.0



10:40:00 10:58:34 11:17:09 11:35:43 11:54:17 12:12:51 12:31:26 12:50:00

AJ4CO Observatory 27 Dec 2015 - DPS 30 kHz IF on TFD Array in CP Mode - LCP MC +13 dB Correction Array 2014 12 18 B.csv Offset 2060 Gain 5.0

