

Subject: [radiojove-data] 26 Dec 2015 non-Io-A

From: Dave Typinski <davetyp@typnet.net>

Date: 12/30/2015 00:57

To: RadioJove-Data <radiojove-data@lists.nasa.gov>

Adding to Wes & Jim's nice reports, here's some non-Io-A from Saturday morning.

RCP dominant L bursting 0849-1023 UTC from 16 to 25 MHz, negative drift emission envelope, no modulation lanes visible.

Tiny bit of LCP dominant L bursting 1008-1009 UTC at 16 MHz.

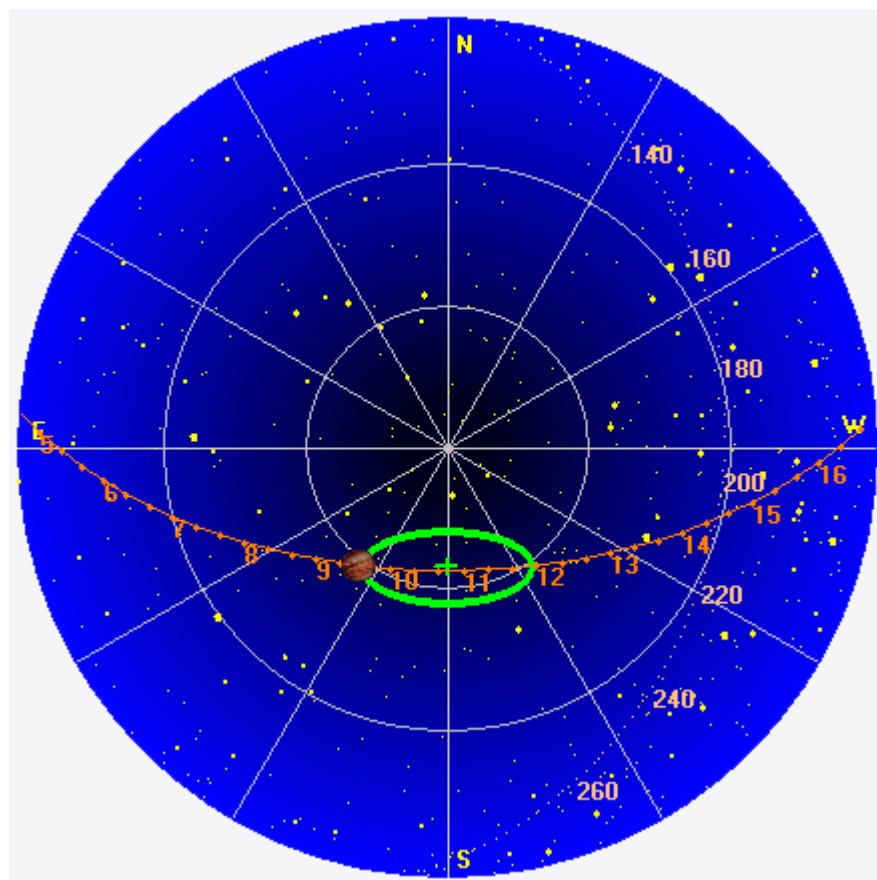
Jupiter was -30° to -6° off axis.

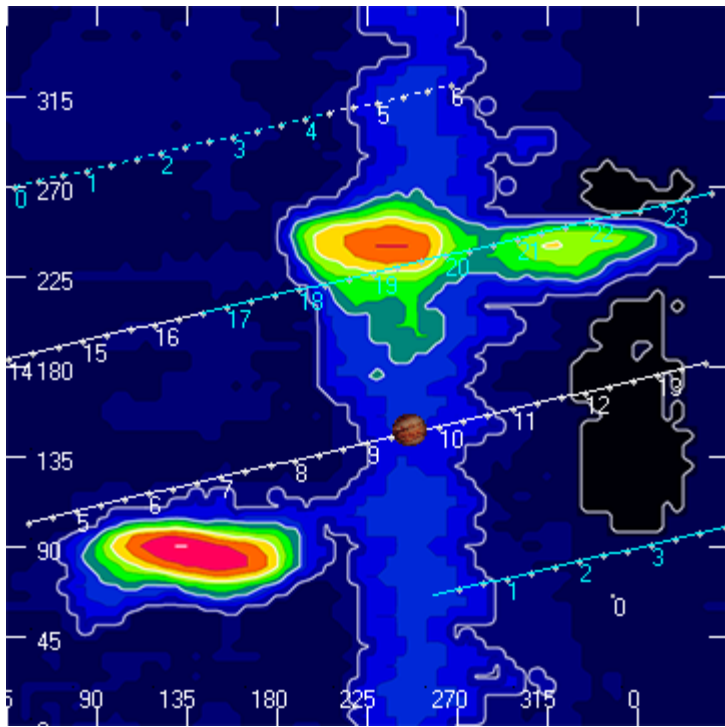
Jupiter was leading the Sun by 101° .

--

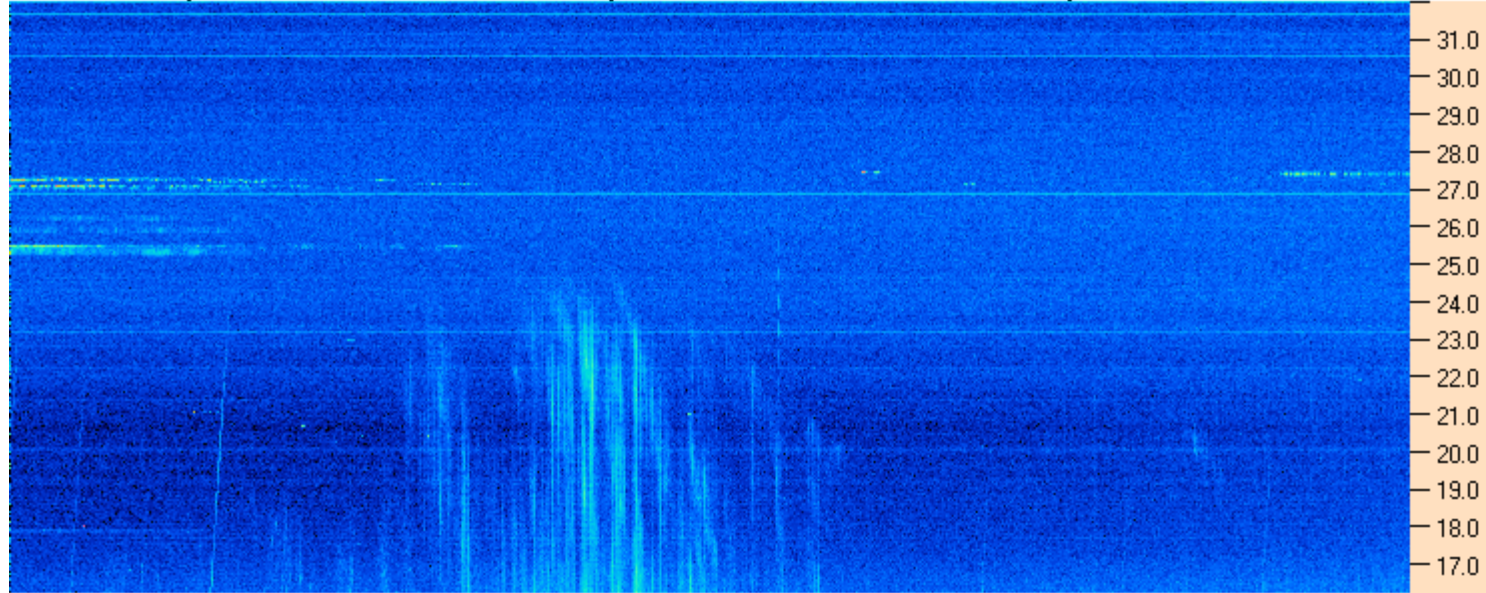
Dave

AJ4CO Observatory 26 Dec 2015, log entry 520 - 521





AJ4CO Observatory 26 Dec 2015 - DPS 30 kHz IF on TFD Array in CP Mode - RCP MC +13 dB Correction Array 2014 12 18 B.csv Offset 2050 Gain 5.0



AJ4CO Observatory 26 Dec 2015 - DPS 30 kHz IF on TFD Array in CP Mode - LCP MC +13 dB Correction Array 2014 12 18 B.csv Offset 2050 Gain 5.0

