

Subject: [radiojove-data] 25 Dec 2015 non-Io-A

From: Dave Typinski <davetyp@typnet.net>

Date: 12/30/2015 00:56

To: RadioJove-Data <radiojove-data@lists.nasa.gov>

Adding to Tom & Wes's nice reports, here's some non-Io-A from Friday morning.

RCP dominant L bursting 1258-1322 UTC from 16 to 22 MHz, positive drift emission envelope, no modulation lanes visible.

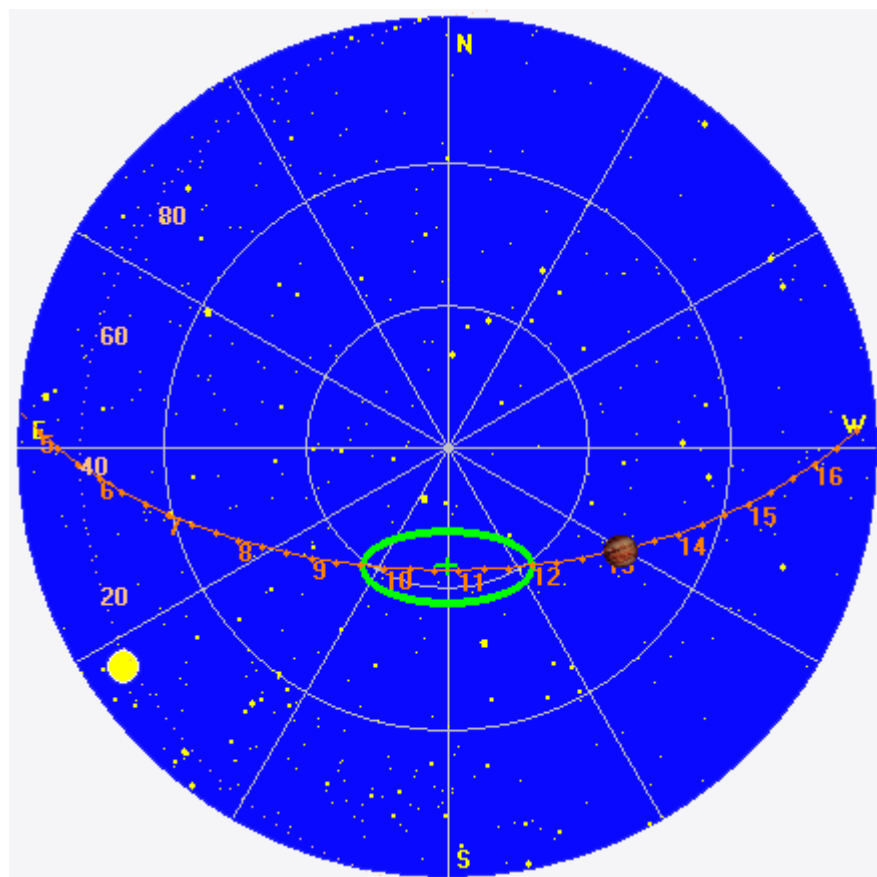
Jupiter was +32° to +38° off axis.

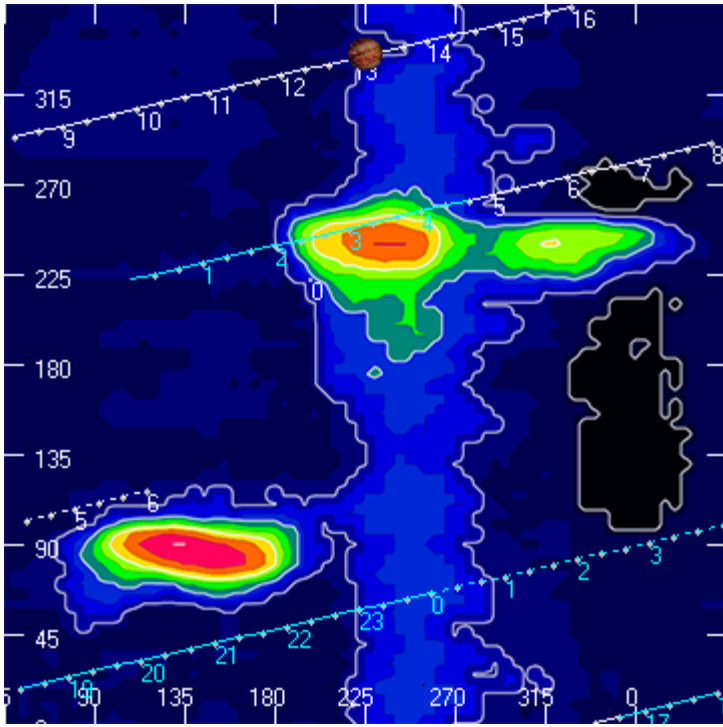
Jupiter was leading the Sun by 101°.

--

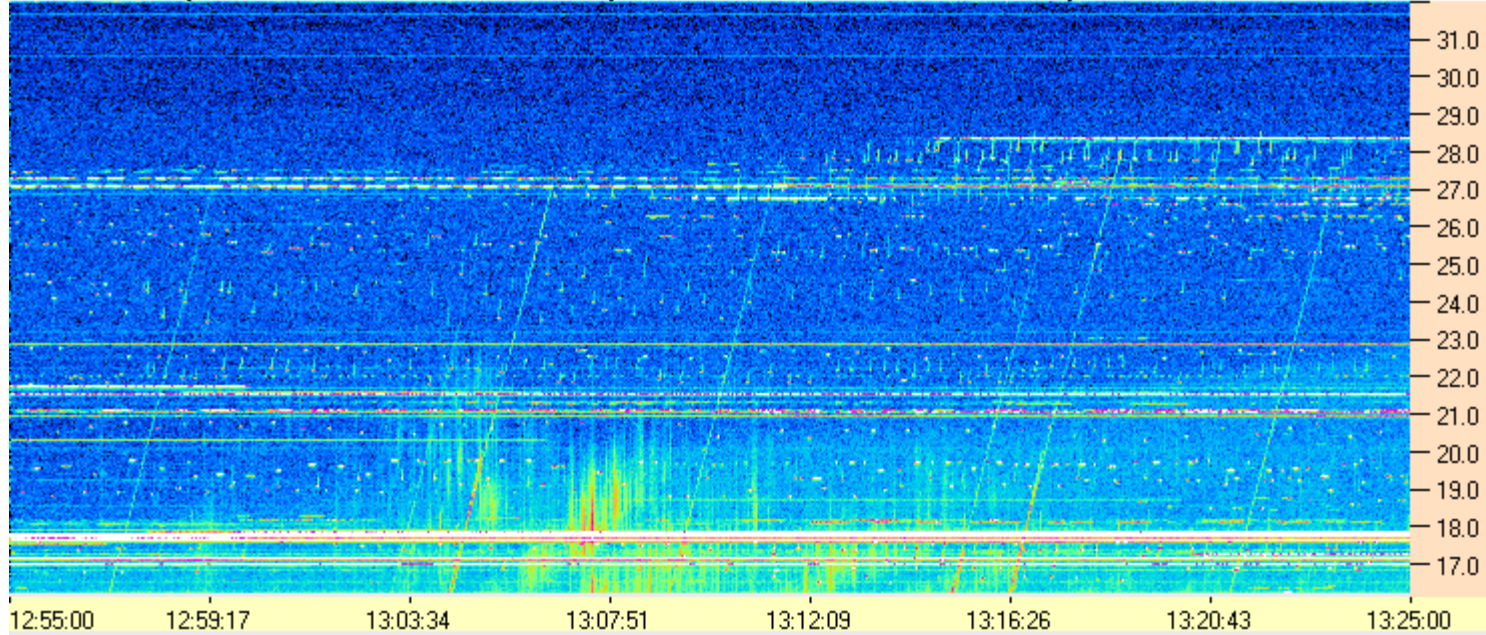
Dave

AJ4CO Observatory 25 Dec 2015, log entry 519





AJ4CO Observatory 25 Dec 2015 - DPS 30 kHz IF on TFD Array in CP Mode - RCP MC +13 dB Correction Array 2014 12 18 B.csv Offset 2075 Gain 5.0



AJ4CO Observatory 25 Dec 2015 - DPS 30 kHz IF on TFD Array in CP Mode - LCP MC +13 dB Correction Array 2014 12 18 B.csv Offset 2075 Gain 5.0

