

**Subject:** [radiojove-data] 19 Dec 2015 non-Io-A

**From:** Dave Typinski <davetyp@typnet.net>

**Date:** 12/21/2015 21:20

**To:** RadioJove-Data <radiojove-data@lists.nasa.gov>

Here's some really weak non-Io-A from Saturday morning.

RCP dominant L bursting 0901-1049 UTC from 16 to 21 MHz, negative drift emission envelope, no modulation lanes visible.

Nothing visible in the Jove receiver strip chart, too weak for that.

Jupiter was  $-32^\circ$  to  $-5^\circ$  off axis.

Jupiter was leading the Sun by  $96^\circ$ .

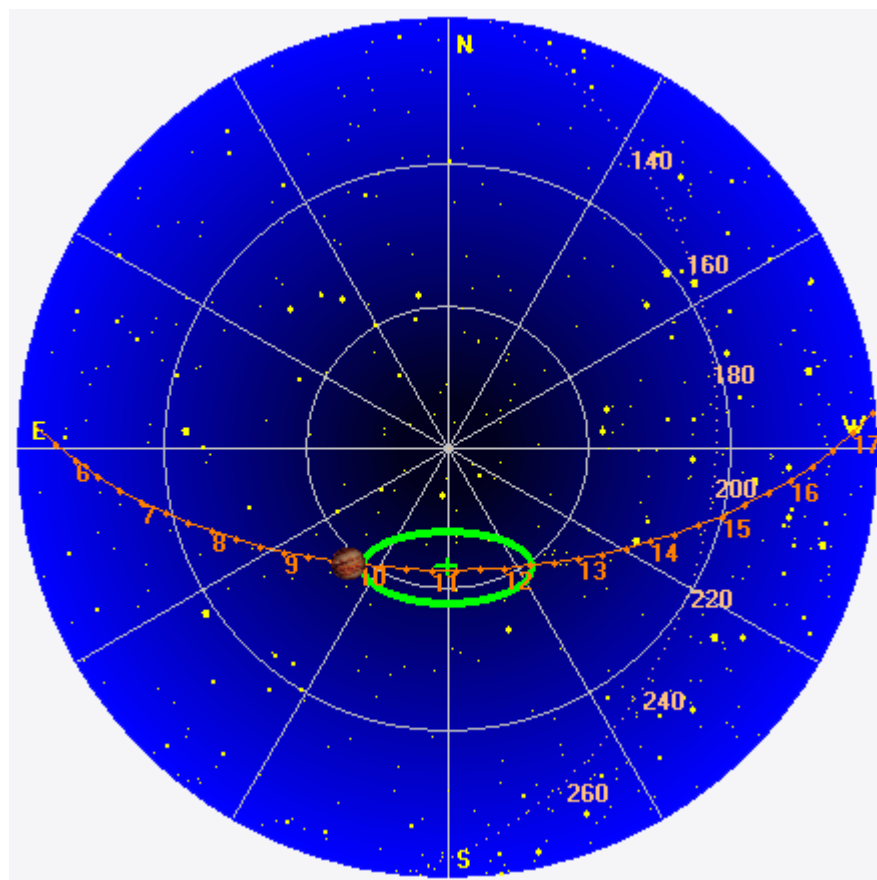
--

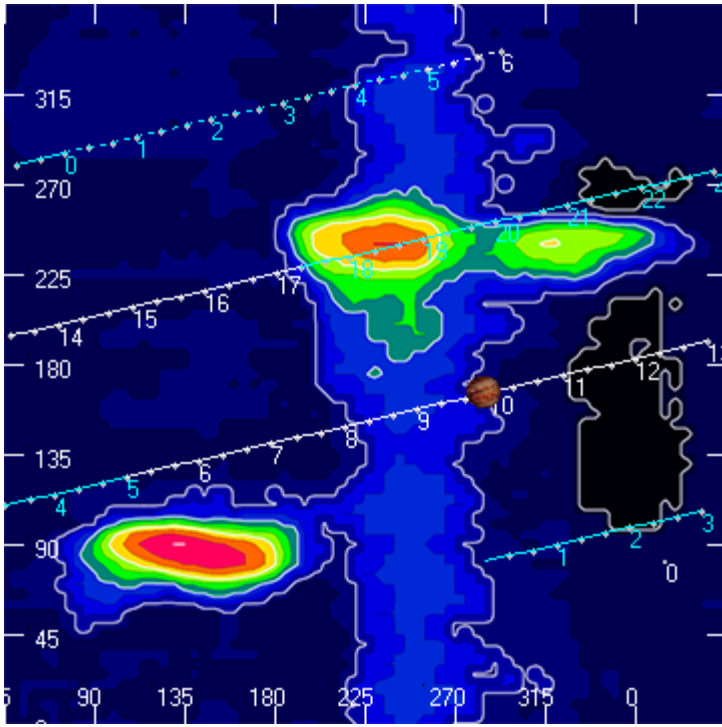
Dave

---

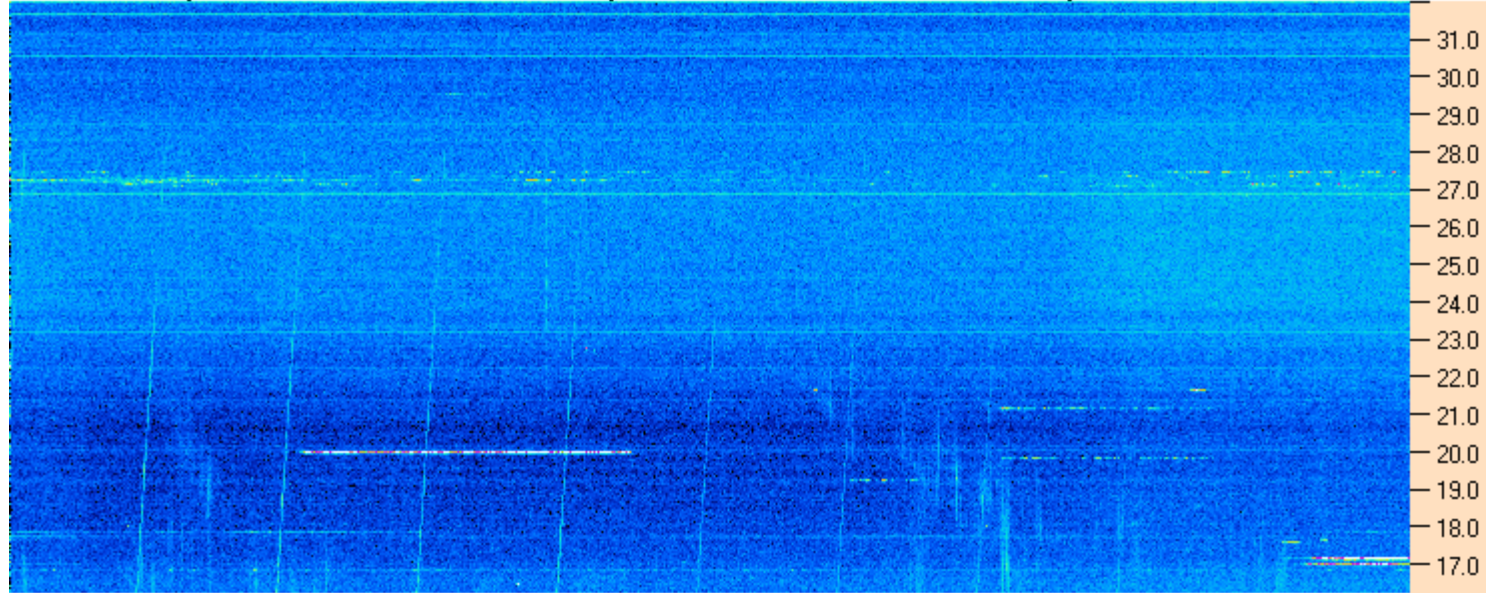
**AJ4CO Observatory 19 Dec 2015, log entry 513**

---





AJ4CO Observatory 19 Dec 2015 - DPS 30 kHz IF on TFD Array in CP Mode - RCP MC +13 dB Correction Array 2014 12 18 B.csv Offset 2050 Gain 7.0



09:00:00 09:17:09 09:34:17 09:51:26 10:08:34 10:25:43 10:42:52 11:00:00

AJ4CO Observatory 19 Dec 2015 - DPS 30 kHz IF on TFD Array in CP Mode - LCP MC +13 dB Correction Array 2014 12 18 B.csv Offset 2050 Gain 7.0

