

Subject: [radiojove-data] 18 Dec 2015 non-Io-B

From: Dave Typinski <davetyp@typnet.net>

Date: 12/19/2015 18:03

To: RadioJove-Data <radiojove-data@lists.nasa.gov>

Here's some non-Io-B from Friday morning.

RCP dominant L bursting 0945-1023 UTC from 16 to 24 MHz, positive drift emission envelope, no modulation lanes visible.

Jupiter was -23° to -14° off axis.

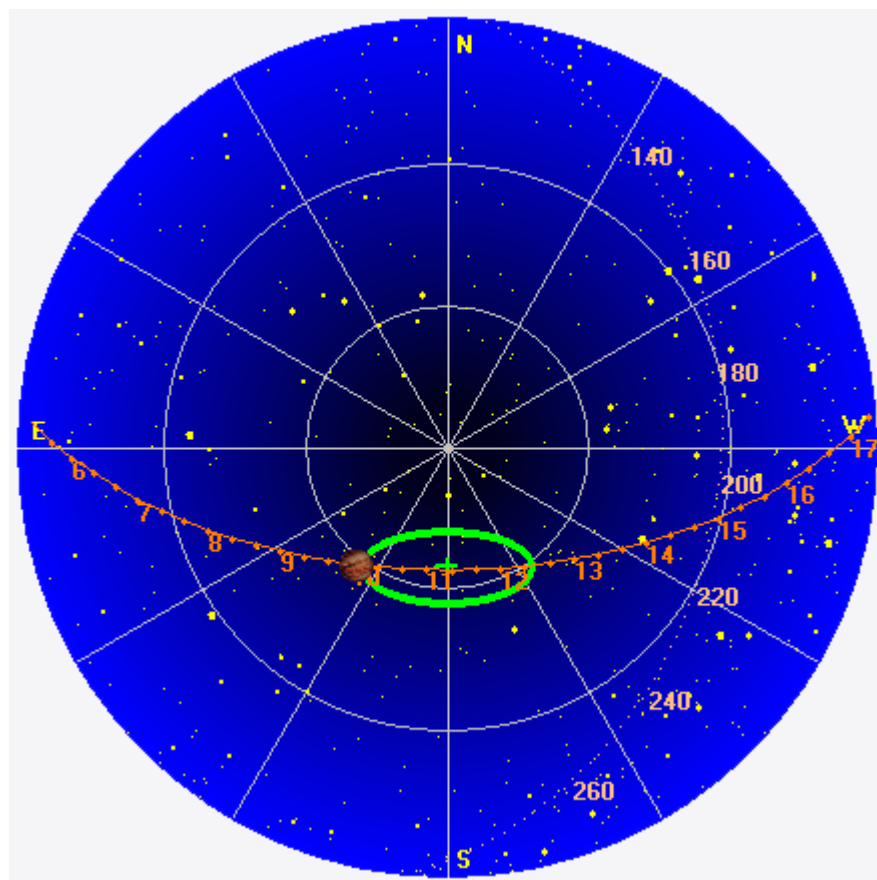
Jupiter was leading the Sun by 94° .

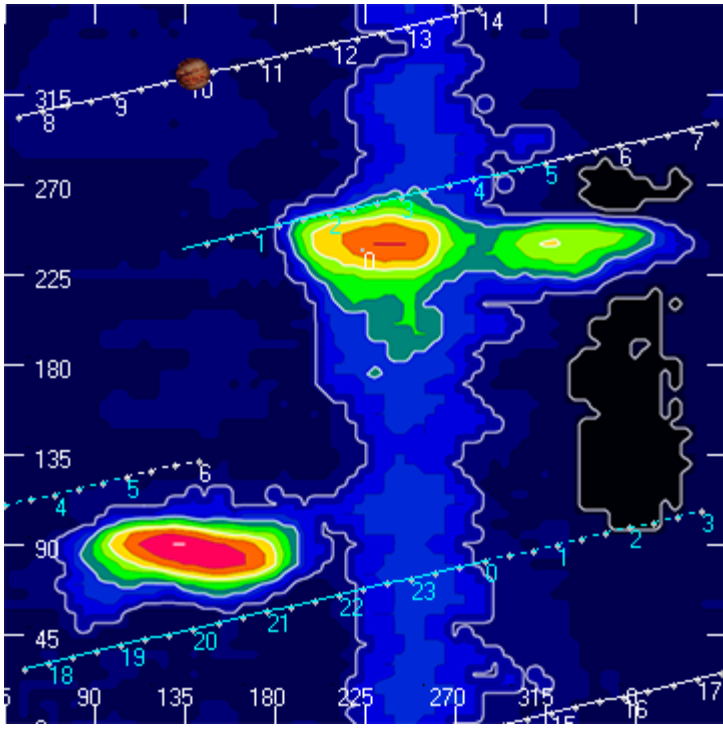
The RCP Jove receiver has developed a slight, slowly varying gain instability. Troubleshooting is in work.

--

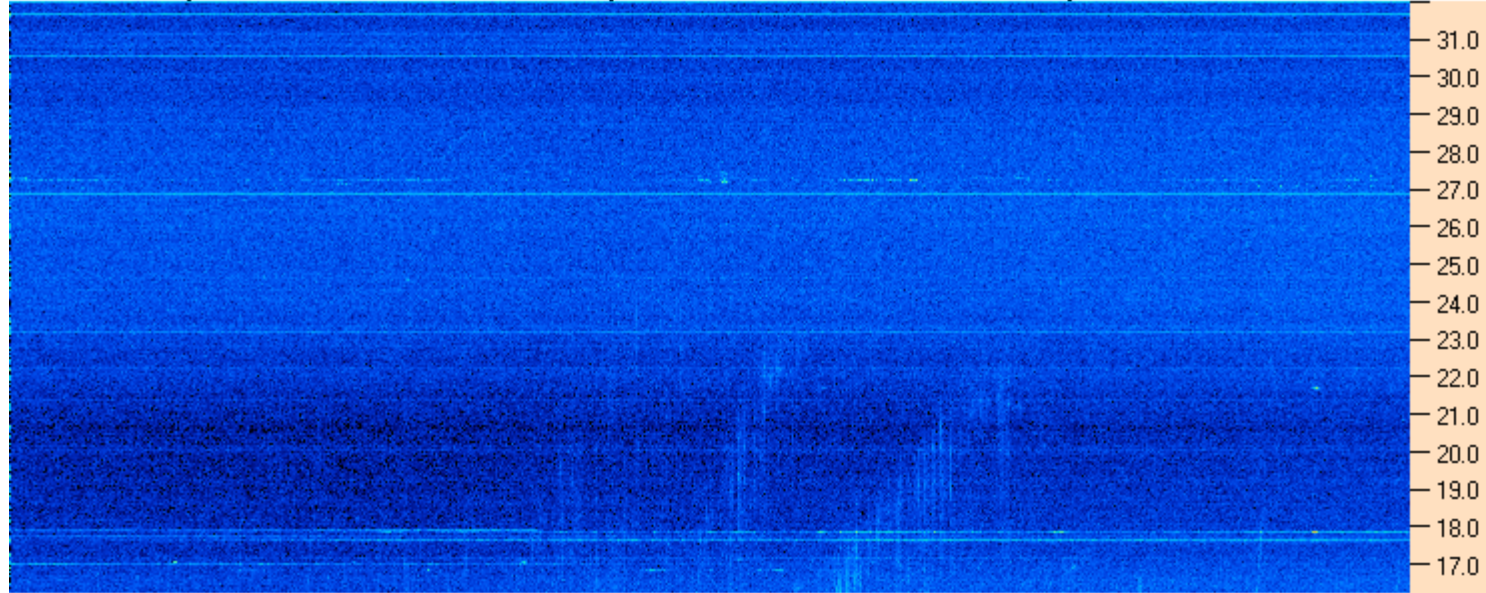
Dave

AJ4CO Observatory 18 Dec 2015, log entry 511





AJ4CO Observatory 18 Dec 2015 - DPS 30 kHz IF on TFD Array in CP Mode - RCP MC +13 dB Correction Array 2014 12 18 B.csv Offset 2060 Gain 5.0



09:00:00 09:17:09 09:34:17 09:51:26 10:08:34 10:25:43 10:42:51 11:00:00

AJ4CO Observatory 18 Dec 2015 - DPS 30 kHz IF on TFD Array in CP Mode - LCP MC +13 dB Correction Array 2014 12 18 B.csv Offset 2060 Gain 5.0

