

Subject: [radiojove-data] 18 Dec 2015 non-Io-A

From: Dave Typinski <davetyp@typnet.net>

Date: 12/19/2015 18:03

To: RadioJove-Data <radiojove-data@lists.nasa.gov>

Adding to Tom's nice report, here's some non-Io-A from Friday morning.

RCP dominant L bursting 1201-1239 UTC from 16 to 21 MHz, negative drift emission envelope, no modulation lanes visible.

Jupiter was $+11^\circ$ to $+20^\circ$ off axis.

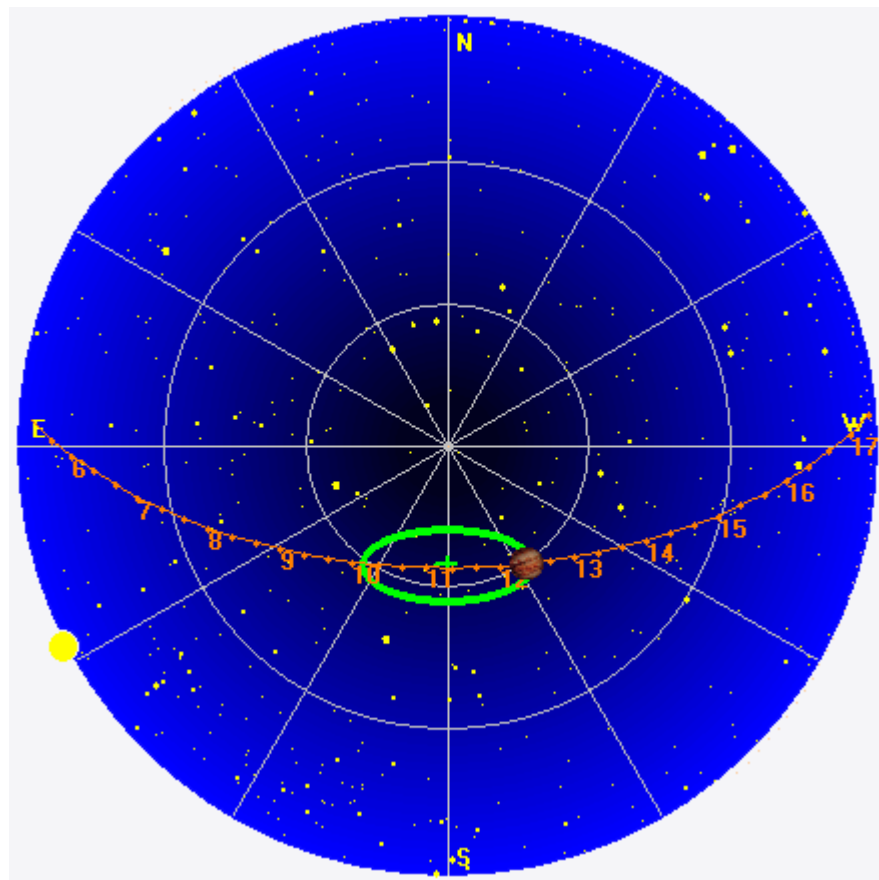
Jupiter was leading the Sun by 94° .

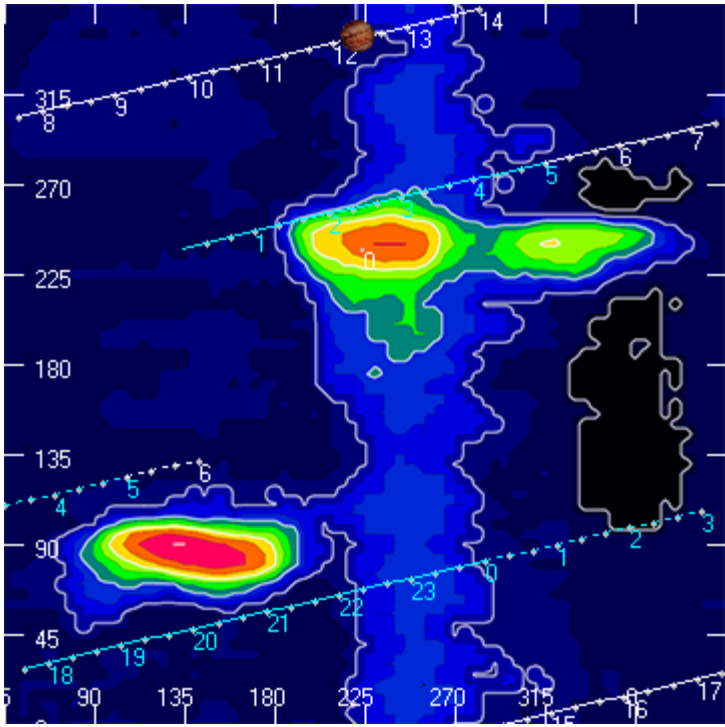
The RCP Jove receiver has developed a slight, slowly varying gain instability. Troubleshooting is in work.

--

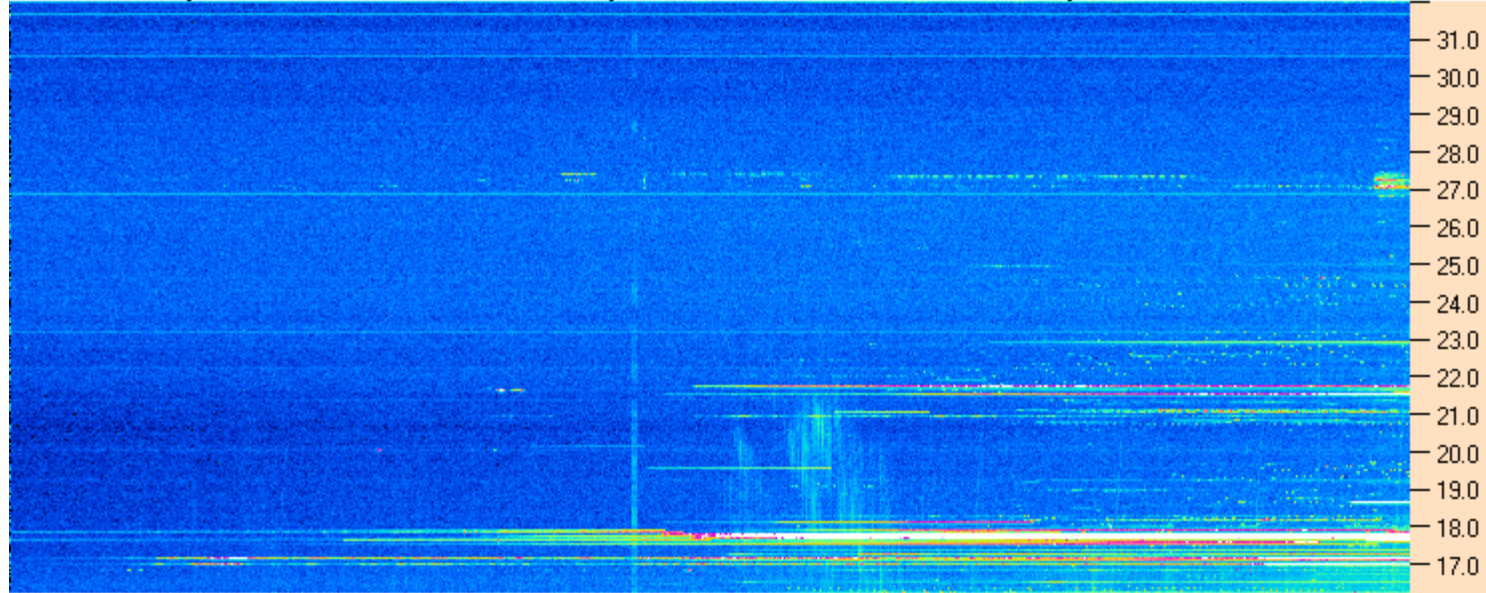
Dave

AJ4CO Observatory 18 Dec 2015, log entry 512





AJ4CO Observatory 18 Dec 2015 - DPS 30 kHz IF on TFD Array in CP Mode - RCP MC +13 dB Correction Array 2014 12 18 B.csv Offset 2060 Gain 5.0



11:00:00 11:17:09 11:34:17 11:51:26 12:08:34 12:25:43 12:42:52 13:00:00

AJ4CO Observatory 18 Dec 2015 - DPS 30 kHz IF on TFD Array in CP Mode - LCP MC +13 dB Correction Array 2014 12 18 B.csv Offset 2060 Gain 5.0

