

**Subject:** [radiojove-data] 17 Dec 2015 non-Io-A

**From:** Dave Typinski <davetyp@typnet.net>

**Date:** 12/18/2015 20:45

**To:** RadioJove-Data <radiojove-data@lists.nasa.gov>

Here's some late non-Io-A (because it's RCP) from Thursday morning.

RCP dominant L bursting 0842-0903 UTC from 16 to 18 MHz, negative drift emission envelope, no modulation lanes visible.

Jupiter was  $-40^\circ$  to  $-35^\circ$  off axis.

Jupiter was leading the Sun by  $93^\circ$ .

The RCP Jove receiver has developed a slight, slowly varying gain instability. Troubleshooting is in work.

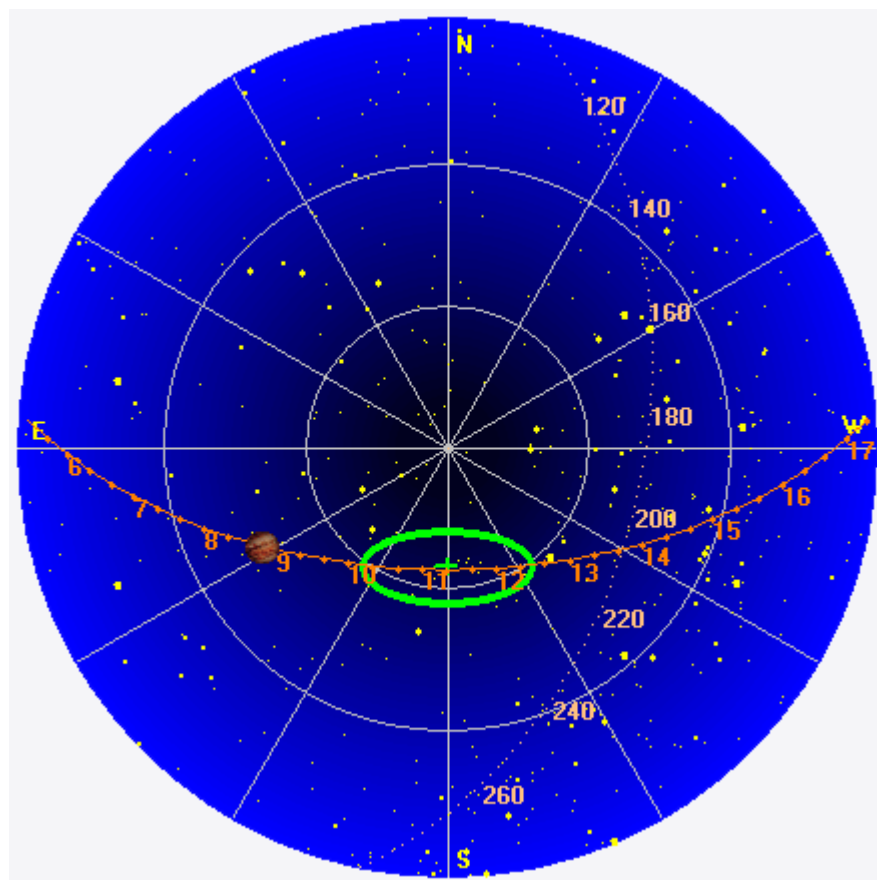
--

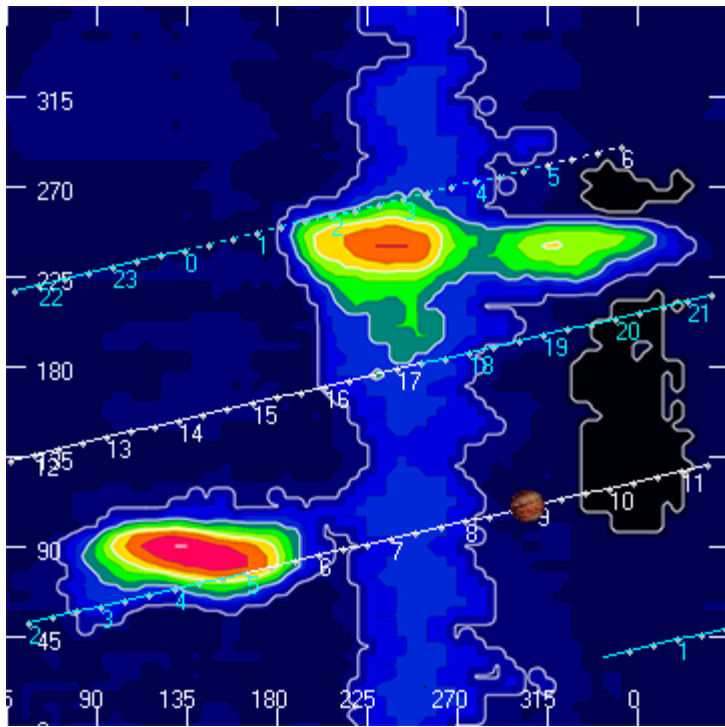
Dave

---

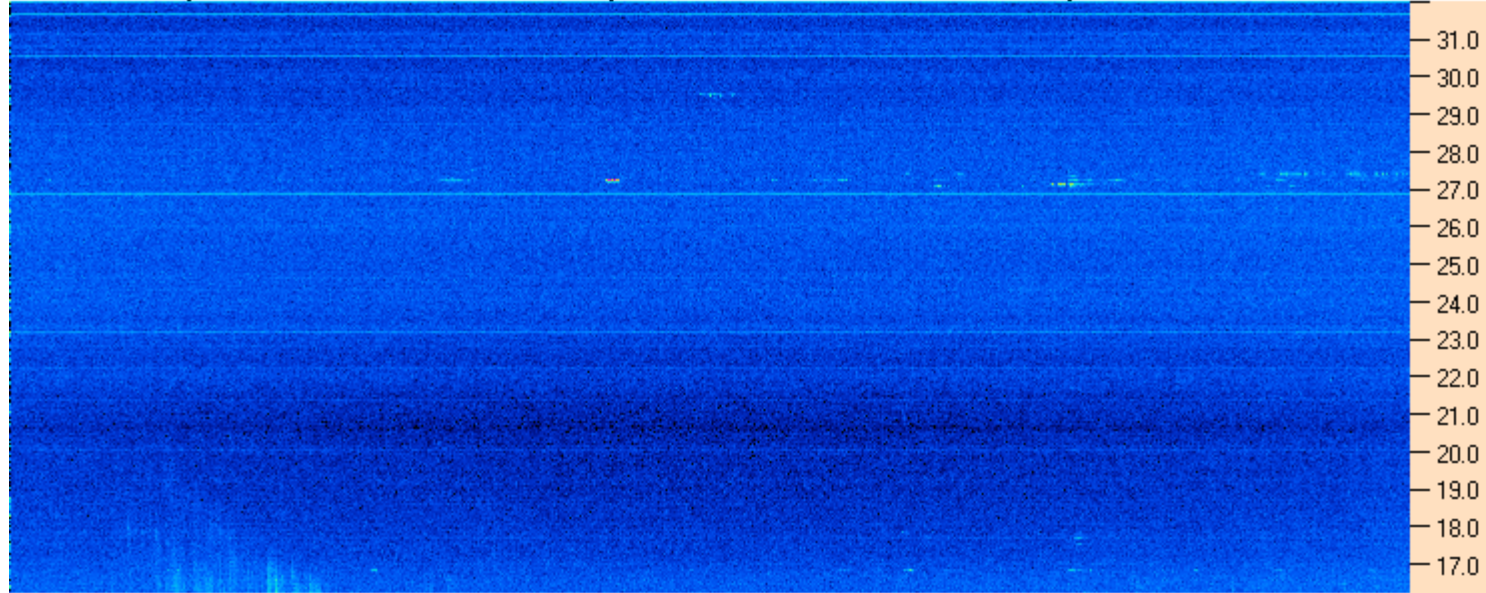
**AJ4CO Observatory 17 Dec 2015, log entry 509**

---



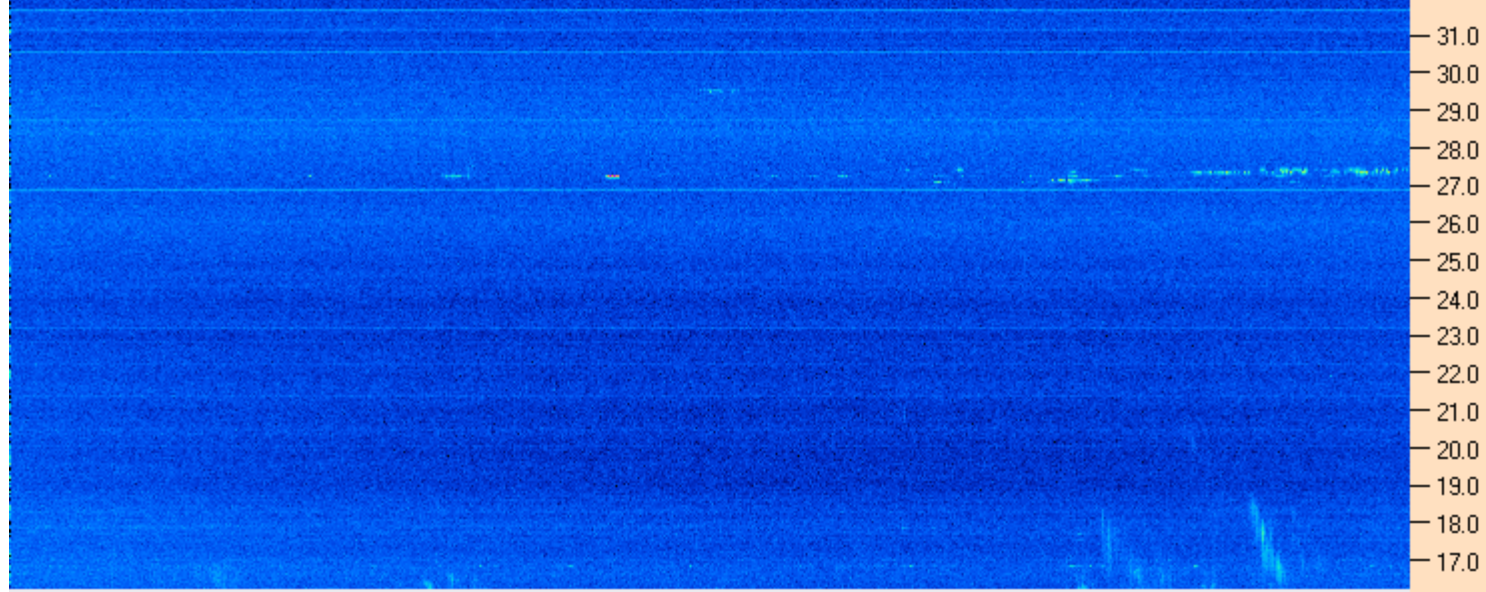


AJ4CO Observatory 17 Dec 2015 - DPS 30 kHz IF on TFD Array in CP Mode - RCP MC +13 dB Correction Array 2014 12 18 B.csv Offset 2050 Gain 5.0

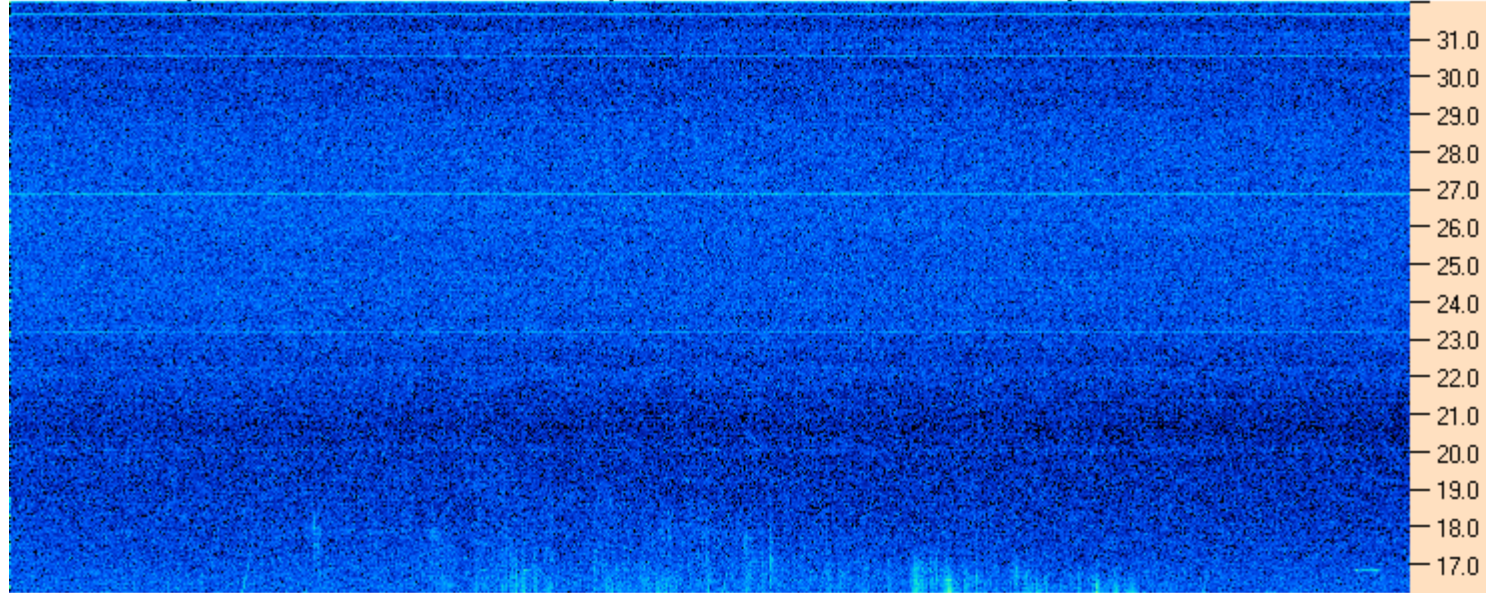


08:30:00 08:51:26 09:12:51 09:34:17 09:55:43 10:17:09 10:38:34 11:00:00

AJ4CO Observatory 17 Dec 2015 - DPS 30 kHz IF on TFD Array in CP Mode - LCP MC +13 dB Correction Array 2014 12 18 B.csv Offset 2050 Gain 5.0



AJ4CO Observatory 17 Dec 2015 - DPS 30 kHz IF on TFD Array in CP Mode - RCP MC +13 dB Correction Array 2014 12 18 B.csv Offset 2050 Gain 5.0



08:35:00 08:40:00 08:45:00 08:50:00 08:55:00 09:00:00 09:05:00 09:10:00

AJ4CO Observatory 17 Dec 2015 - DPS 30 kHz IF on TFD Array in CP Mode - LCP MC +13 dB Correction Array 2014 12 18 B.csv Offset 2050 Gain 5.0

