

Subject: [radiojove-data] 01 Dec 2015 Io-D

From: Dave Typinski <davetyp@typnet.net>

Date: 12/02/2015 21:54

To: RadioJove-Data <radiojove-data@lists.nasa.gov>

Here's some weak Io-D from Tuesday morning.

LCP dominant L bursting 0947-1119 UTC from 16 to 23 MHz, positive drifting emission envelope, no modulation lanes visible.

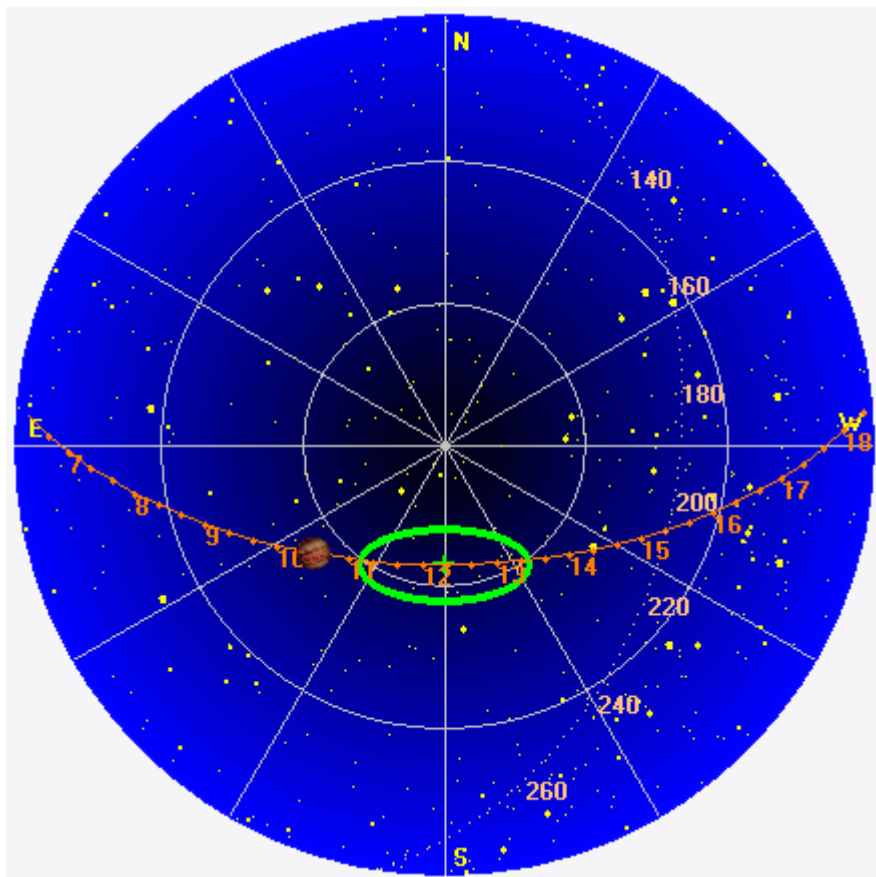
Jupiter was -38° to -15° off axis.

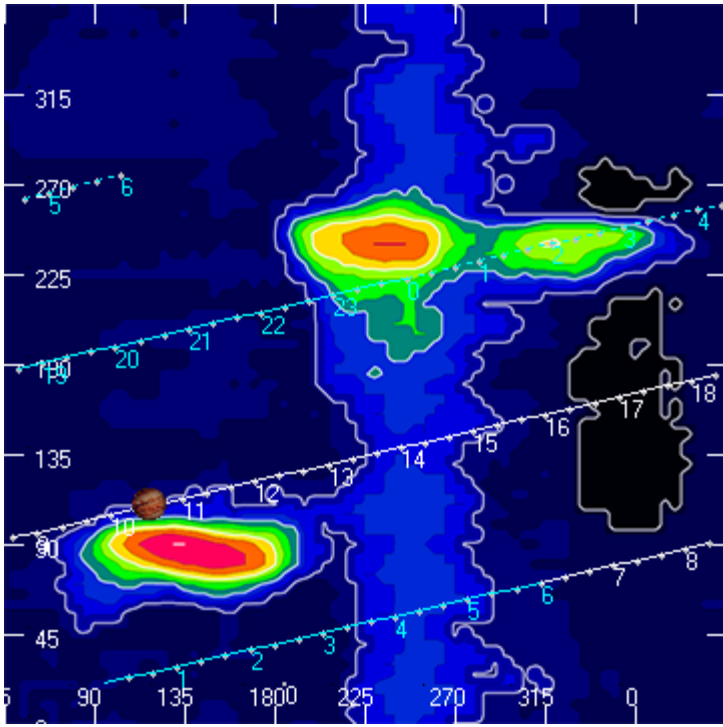
Jupiter was leading the Sun by 78° .

--

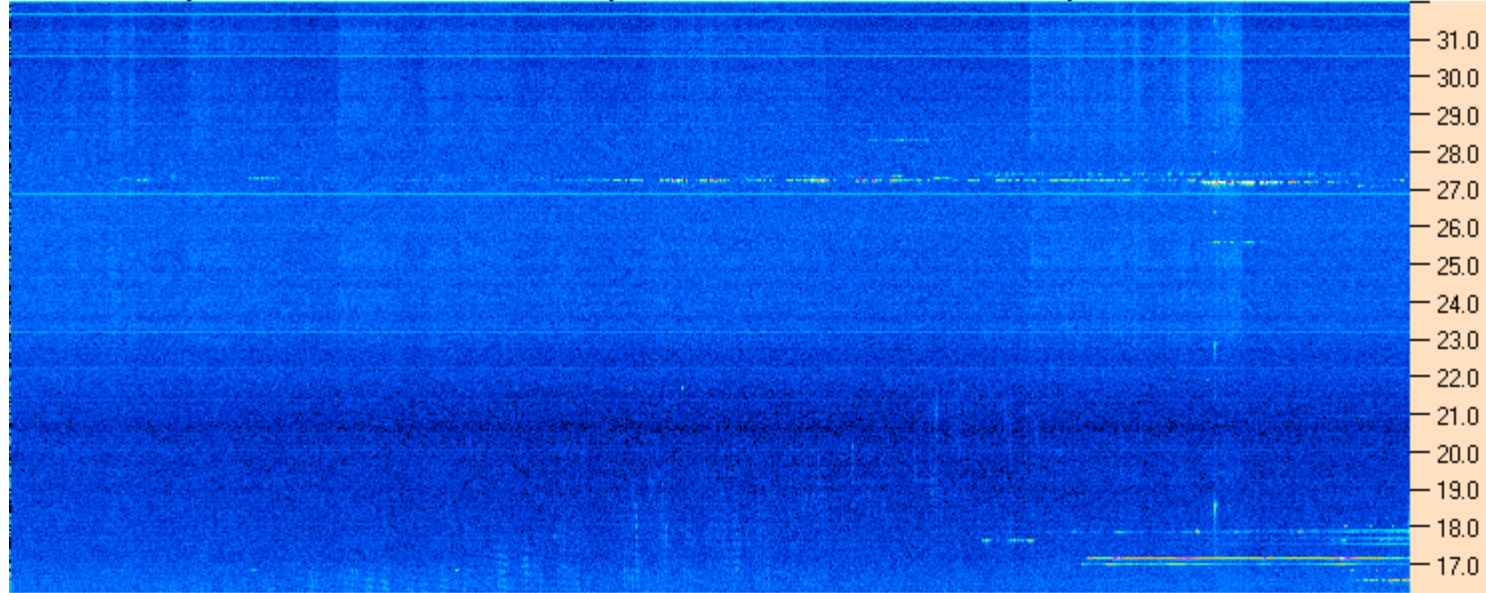
Dave

AJ4CO Observatory 01 Dec 2015, log entry 487





AJ4CO Observatory 01 Dec 2015 - DPS 30 kHz IF on TFD Array in CP Mode - RCP MC +13 dB Correction Array 2014 12 18 B.csv Offset 2050 Gain 5.0



09:30:00 09:48:34 10:07:09 10:25:43 10:44:17 11:02:52 11:21:26 11:40:00

AJ4CO Observatory 01 Dec 2015 - DPS 30 kHz IF on TFD Array in CP Mode - LCP MC +13 dB Correction Array 2014 12 18 B.csv Offset 2050 Gain 5.0

