

**Subject:** [radiojove-data] 27 Nov 2015 non-Io-A

**From:** Dave Typinski <davetyp@typnet.net>

**Date:** 11/28/2015 18:12

**To:** RadioJove-Data <radiojove-data@lists.nasa.gov>

Here's some VERY weak non-Io-A from Friday morning.

RCP dominant L bursting 0955-1128 UTC from 16 to 23 MHz, negative drifting emission envelope, no modulation lanes visible.

Perhaps one tiny blip visible in the 20 MHz strip chart.

Jupiter was  $-40^\circ$  to  $-16^\circ$  off axis.

Jupiter was leading the Sun by  $74^\circ$ .

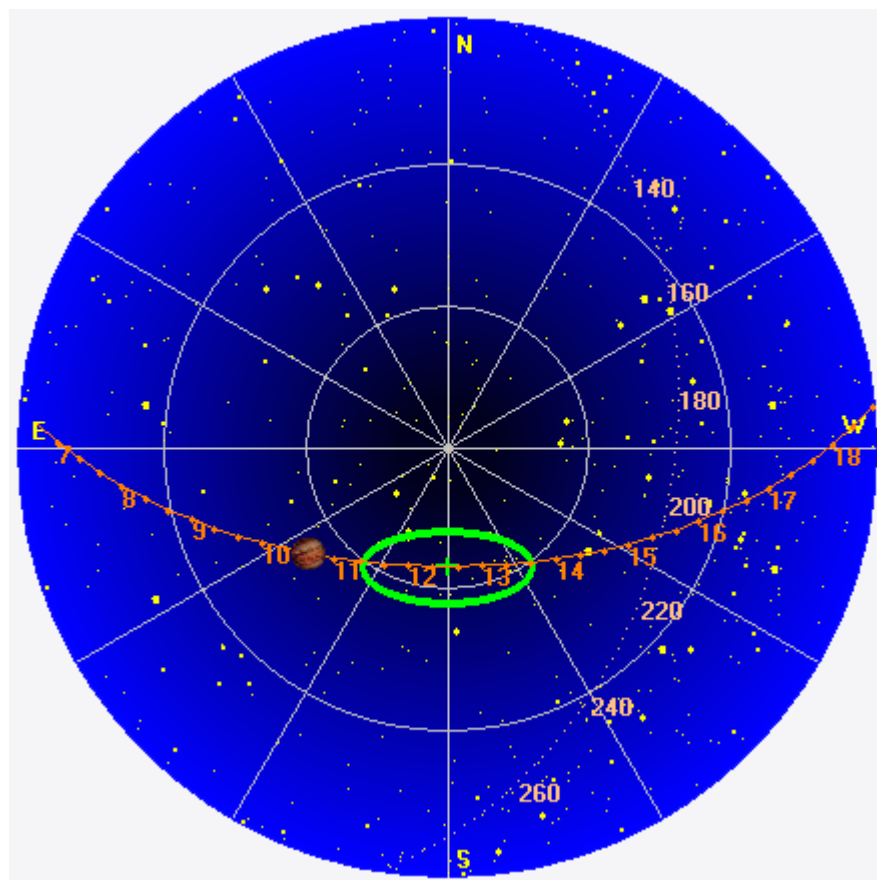
--

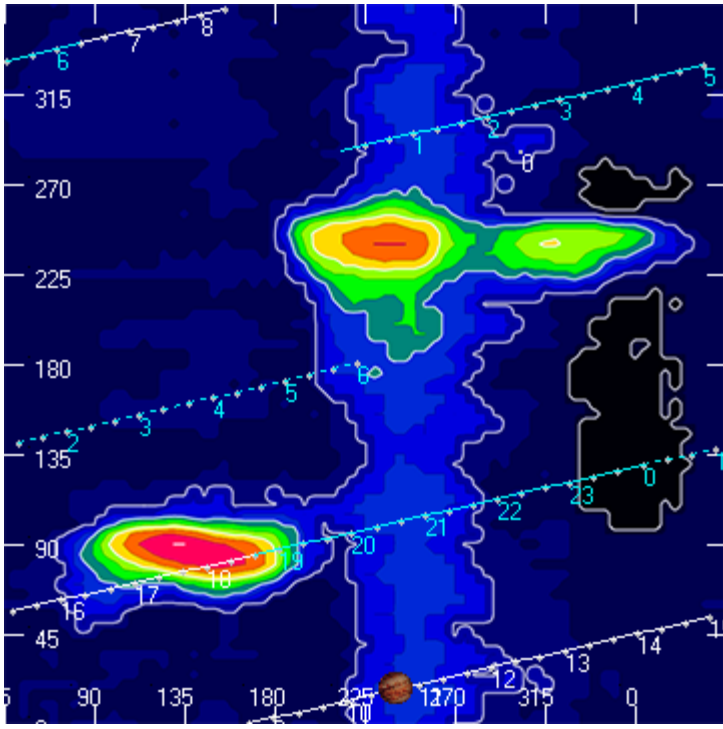
Dave

---

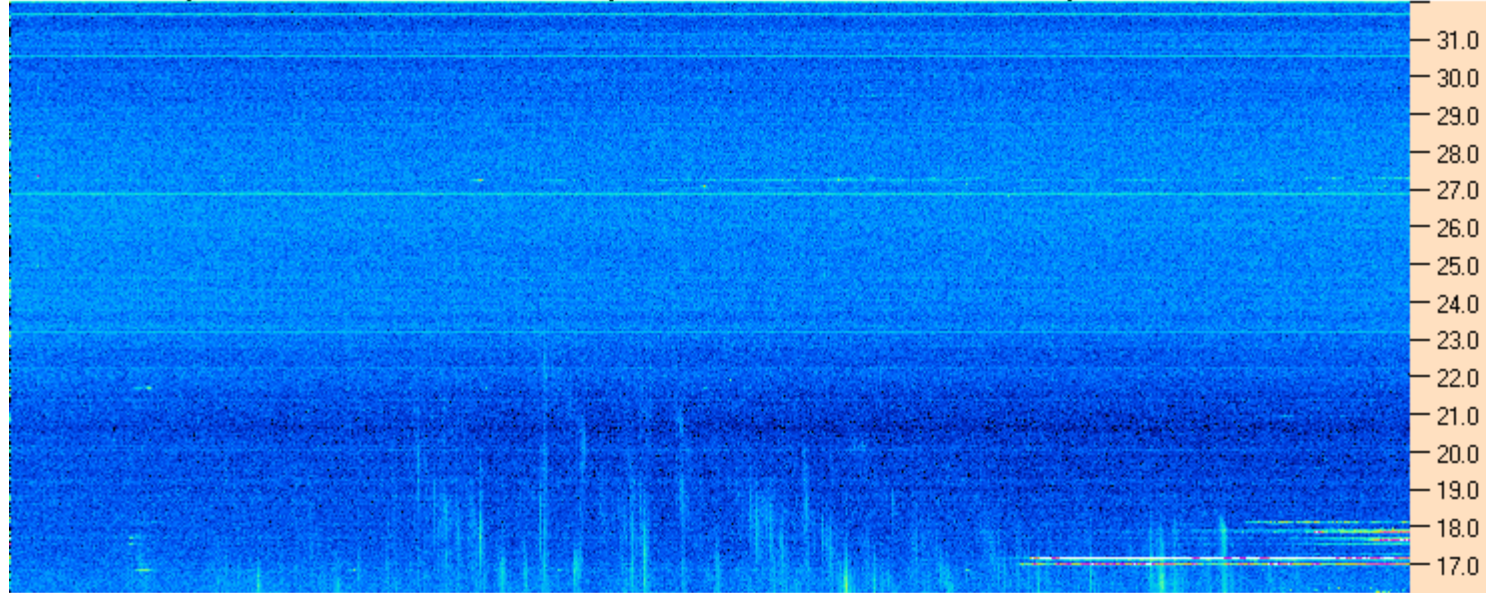
**AJ4CO Observatory 27 Nov 2015, log entry 486**

---





AJ4CO Observatory 27 Nov 2015 - DPS 30 kHz IF on TFD Array in CP Mode - RCP MC +13 dB Correction Array 2014 12 18 B.csv Offset 2050 Gain 7.0



09:45:00 10:01:26 10:17:51 10:34:17 10:50:43 11:07:09 11:23:34 11:40:00

AJ4CO Observatory 27 Nov 2015 - DPS 30 kHz IF on TFD Array in CP Mode - LCP MC +13 dB Correction Array 2014 12 18 B.csv Offset 2050 Gain 7.0

